

pompano beach

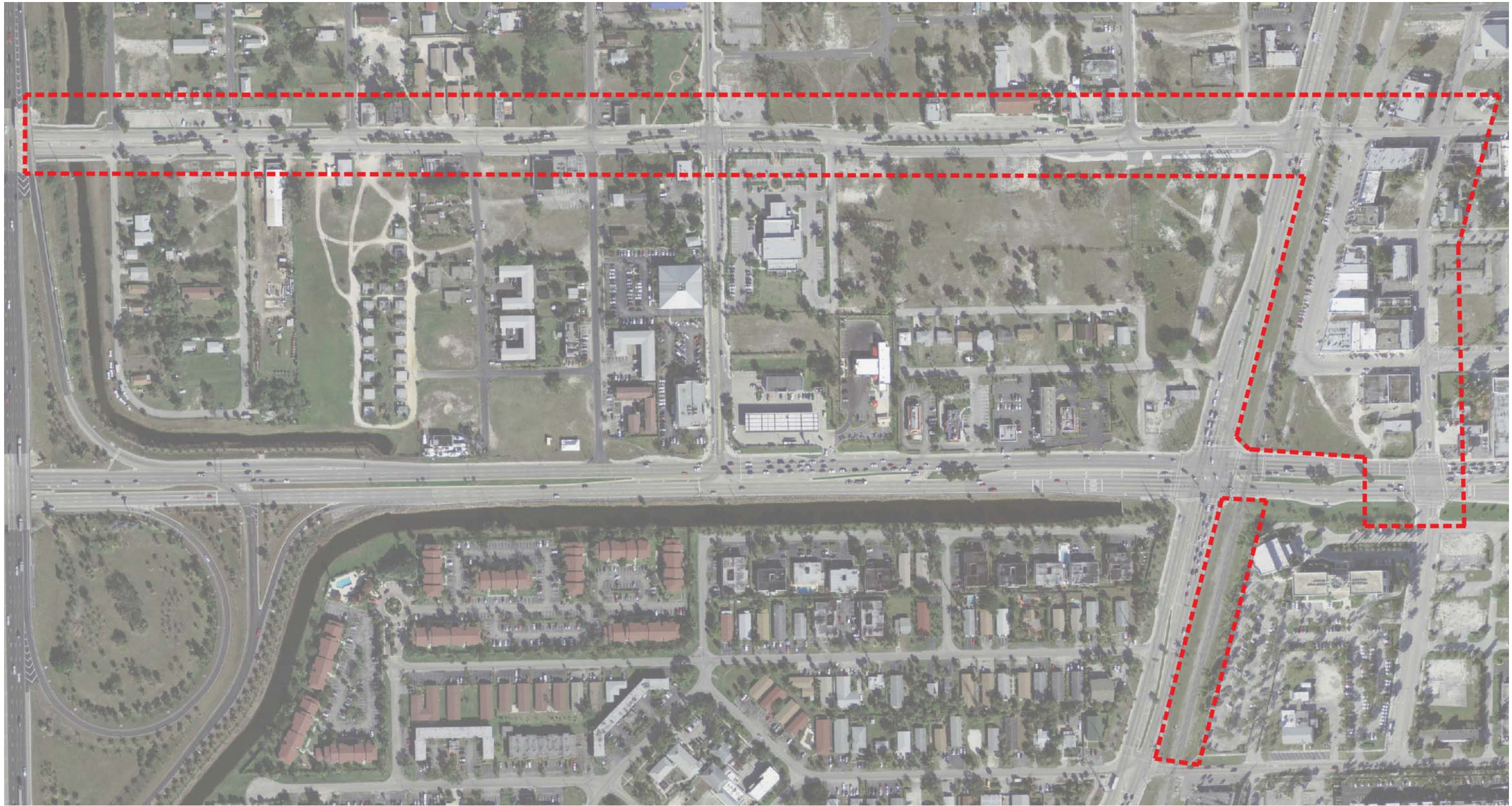
schematic design presentation [MLK / Hammondville & Old Pompano District]
02.16.2012

prepared for:



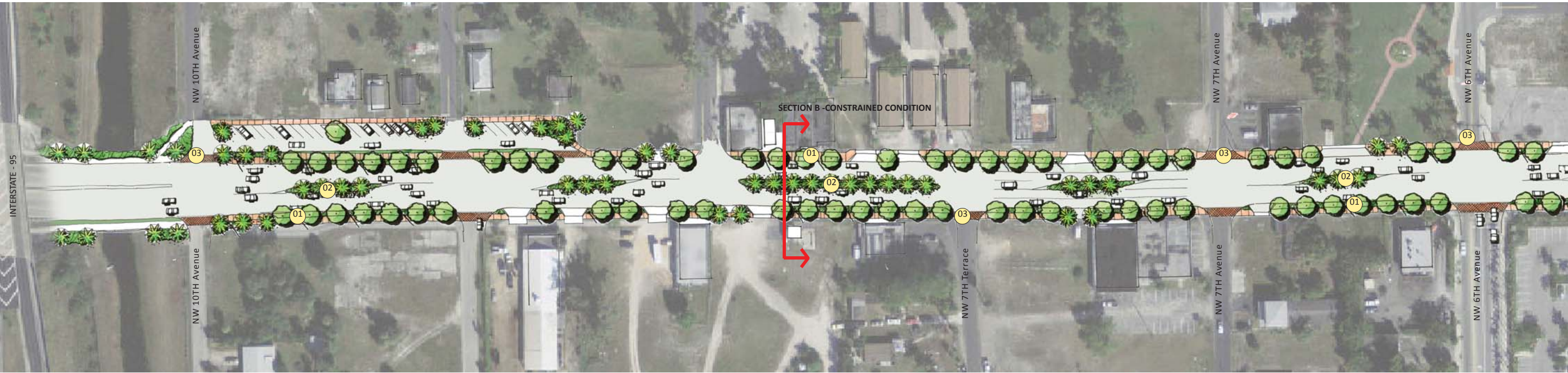
prepared by:





AERIAL IMAGE/LIMIT OF WORK - 1





WEST - MLK/HAMMONDVILLE



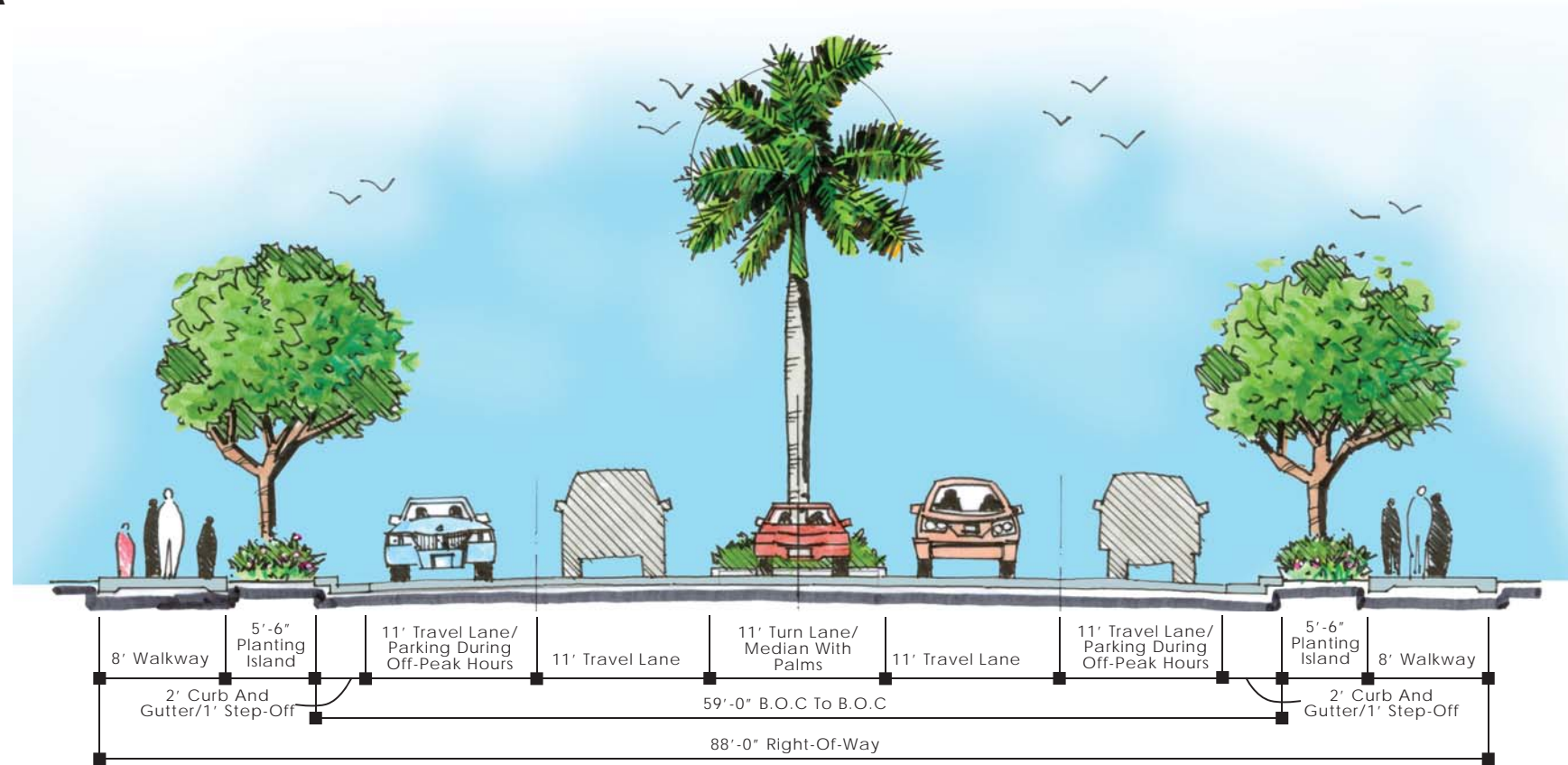
EAST - MLK/HAMMONDVILLE



Legend

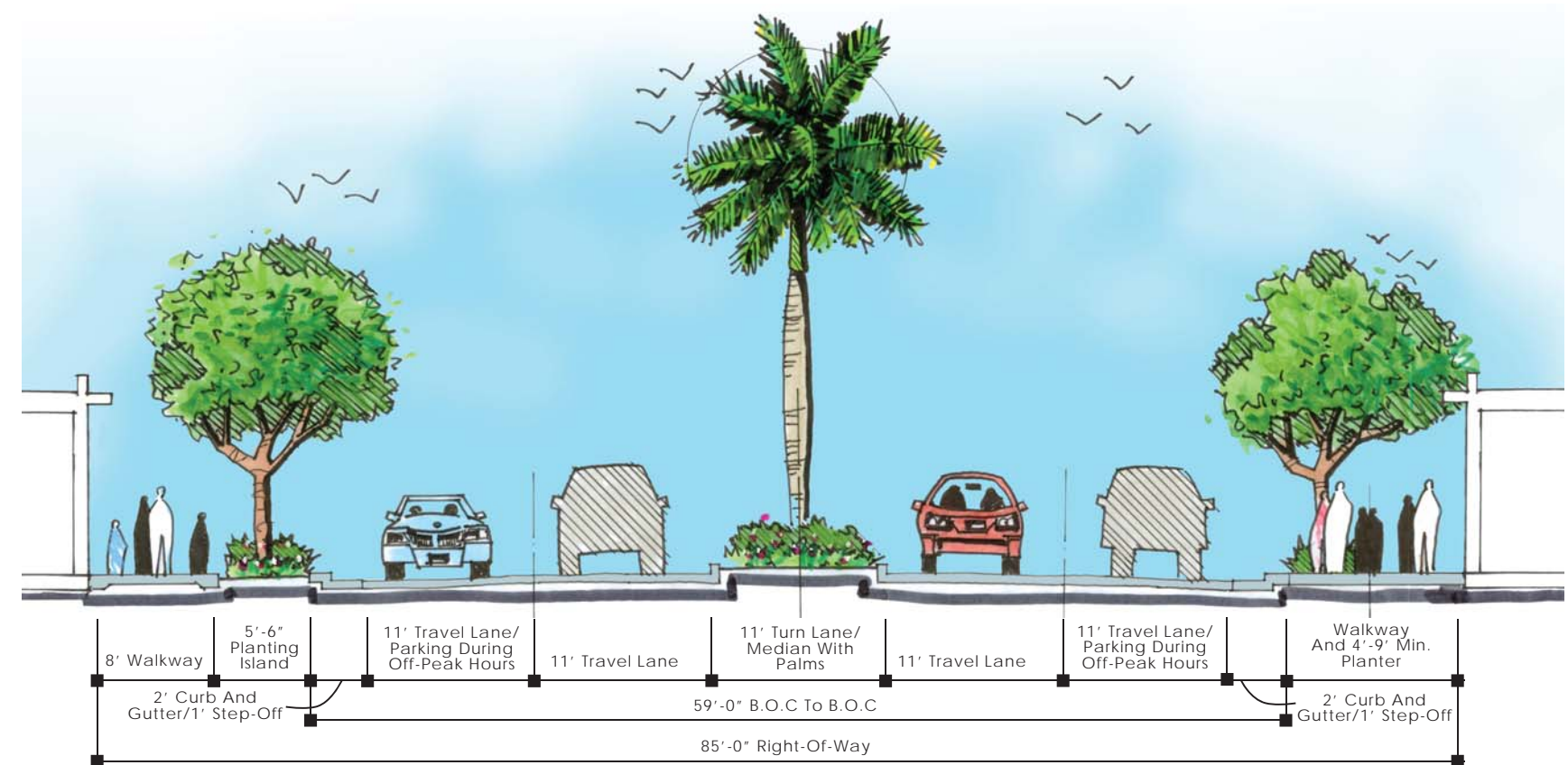
- 01 Pedestrian Walkway With Improved Paving, Street Trees, and Shrubs
- 02 Roadway Median With Improved Palm Planting and Shrubs
- 03 Pedestrian Crosswalks With Improved Paving
- 04 Pat Larkin Community Center
- 05 First Haitian Baptist Church Parking

A



STREET SECTIONS -MLK - TYPICAL CONDITION

B



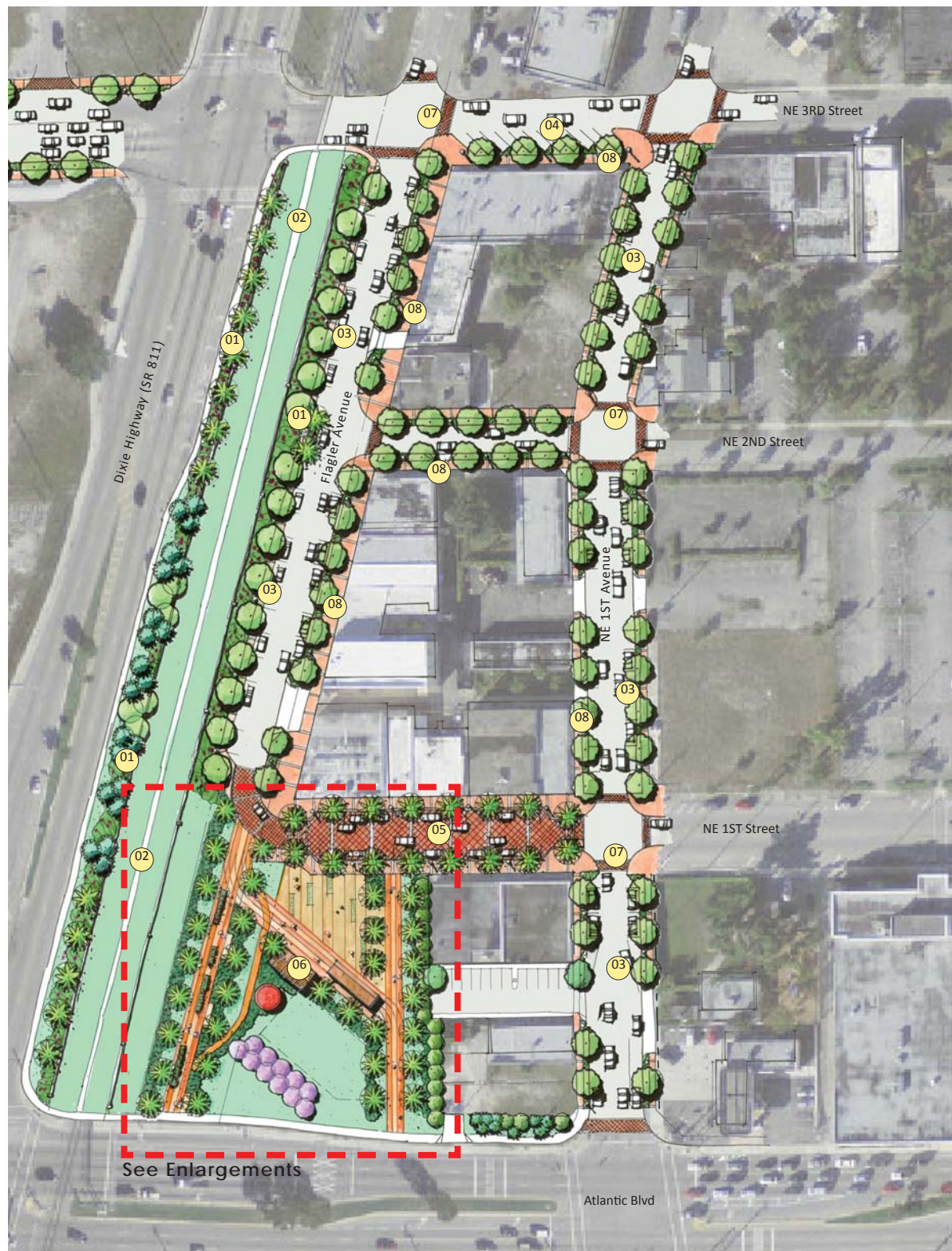
STREET SECTIONS - MLK- CONSTRAINED CONDITION



Light in Bronze Finish



Light in Bronze Finish



OLD POMPANO DISTRICT



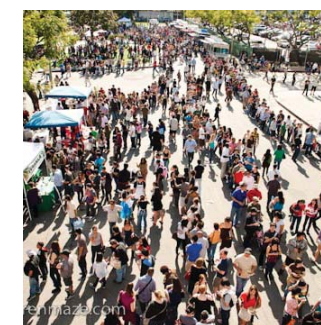
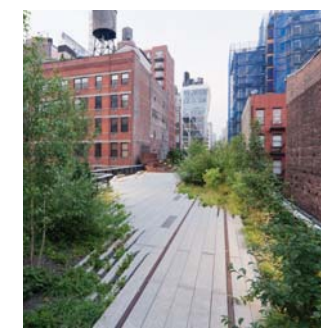
FEC CORRIDOR SOUTH

Legend

- 01 Improved Planting With Trees, Palms and Shrubs In FEC Right-Of-Way
- 02 Center Line of FEC Right-Of-Way
- 03 Parallel Parking
- 04 Angled Parking
- 05 Festival Street With Improved Paving On Roadway and Walkways Along With Feature Palm Planting and Parallel Parking
- 06 Old Pompano District Plaza - See Enlargement
- 07 Pedestrian Crosswalks With Improved Paving
- 08 Pedestrian Walkway With Improved Paving, Street Trees, and Low Planting
- 09 Pompano Beach City Building

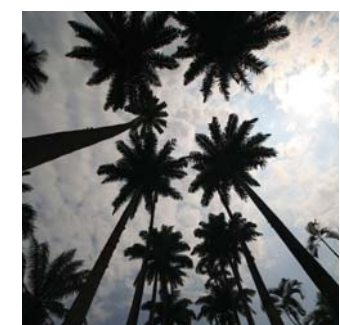


OLD POMPANO/FEC CORRIDOR SOUTH ENLARGEMENT PLAN- 5



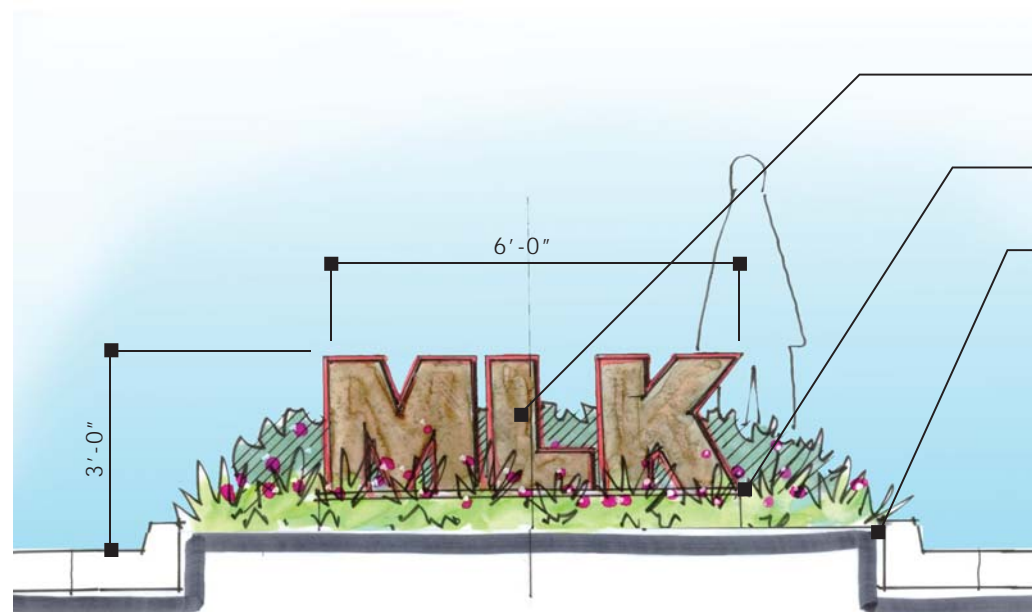
Legend

- 01 Festival Street With Special Paving and Feature Palm Planting
- 02 Special Paving At Festival Street Walkways
- 03 Pedestrian Walkways With Special Paving To Link Festival Street and Plaza With Atlantic
- 04 Events Lawn
- 05 Enhanced Planting At Main Events Plaza
- 06 Main Events Plaza
- 07 Train Car/Food Concession
- 08 Train Depot/Events Stage
- 09 Water Tower/Iconic Monument
- 10 FEC Train Rail Line And Right-Of-Way
- 11 Planting in FEC Right-of-Way



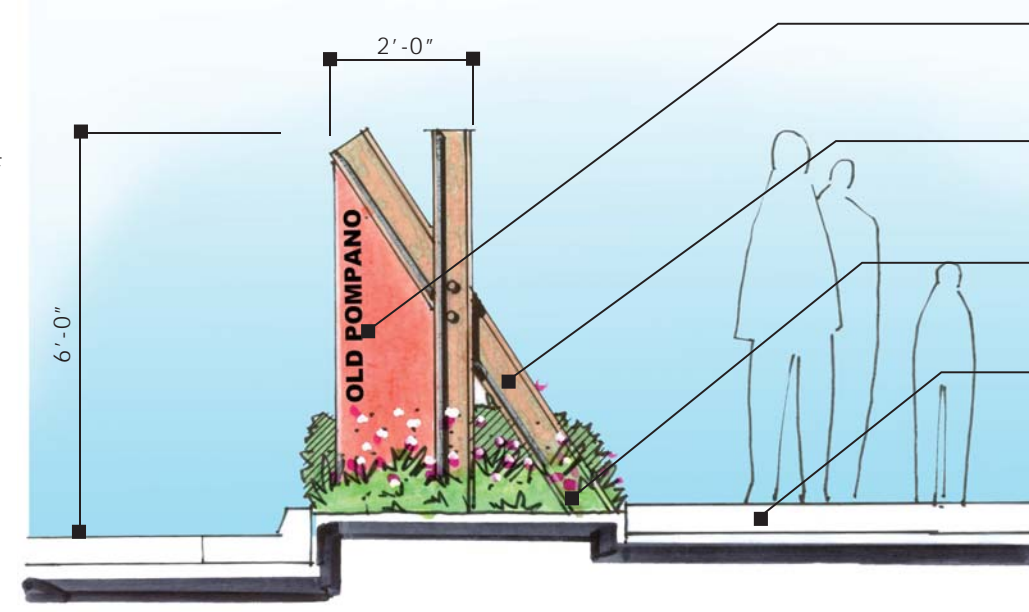
Legend

- | | |
|--|---|
| 01 Festival Street With Special Paving and Feature Palm Planting | 06 Main Events Plaza |
| 02 Special Paving At Festival Street Walkways | 07 Secondary Plaza |
| 03 Pedestrian Walkways With Special Paving To Link Festival Street and Plaza With Atlantic | 08 Events Stage With Shade Structures |
| 04 Events Lawn | 09 Water Tower/Iconic Monument |
| 05 Enhanced Planting At Main Events Plaza | 10 FEC Train Rail Line And Right-Of-Way |
| | 11 Planting in FEC Right-of-Way |



- METAL LETTERS WITH BACK LIGHTING AT NIGHT
- LOW PLANTING AT BASE OF MONUMENT
- MONUMENT LOCATED IN MEDIAN

A - MLK/HAMMONDVILLE CONCEPTUAL MONUMENT



- PAINTED METAL SHEET WITH SIGNAGE LETTERS AND LIGHTING
- RAILROAD MATERIAL ELEMENTS AS SIGN STRUCTURE
- LOW PLANTING IN ISLANDS BETWEEN ROADWAY AND SIDEWALKS
- SIDEWALKS

B - OLD POMPANO DISTRICT CONCEPTUAL MONUMENT



PROPOSED CONCEPTUAL MONUMENT LOCATIONS