



**pompano
beach**
Florida's Warmest Welcome

CITY OF POMPANO BEACH NEW FIRE STATION #114

DESIGN/BUILD BY:



Di Pompeo
Construction Corporation
A Family Tradition Since 1927

SALTZ MICHELSON
ARCHITECTS

THE NEW FIRE STATION #114 – G.O BOND PROJECT

- The City currently has six Fire Stations and the New Fire Station #114 will be the seventh Fire Station to be built.
- Fire Station #114 will be located at the corner of SW 36th Avenue and McNab Road to reduce response time and enhance fire and emergency services to the area.
- This project includes land acquisition along with the new 2-story, 3-bay Fire Station.
- The cost to design and build the station will be approx. \$5,750,000.
- This contract requires two Public Readings. The City Commission approved first reading on Ordinance on March 12, 2019 and the second reading will go before the Commission for approval tomorrow, April 23, 2019.
- The Fire Station's Architectural Design Phase has already started.
- The Fire Station should be completed and delivered to the City by September 2021.



FIRE STATION #114 – SITE PLAN



FIRE STATION #114 – SOUTH and EAST ELEVATIONS



SOUTH ELEVATION
SCALE: 1/8" = 1' - 0"



EAST ELEVATION
SCALE: 1/8" = 1' - 0"

- We listened to the wants and needs of the fire department specifics and included them in our final product.
- The exterior design maintains and accents the same architectural “style” as set forth by previous prototype “City Standard”.
- The windows and covers on the second floor facing South will be opaque so no one can see into the neighboring residential units.
- All City of Pompano Beach Fire Stations are designed to the City’s own Green Development for Sustainability Standards.

FIRE STATION #114 – FIRST FLOOR PLAN



- The circulation for the station has been mostly streamlined for single double loaded corridors.
- The pharmacy is located adjacent to the circulation to and from the apparatus bays for ease and use.
- The Battalion Chief is set on the first floor to provide privacy and administration separation from living areas above.
- The Laundry room has been located “inside” the living area away from contaminants harmful to fire crews.
- The ice machine has been relocated in the alcove area further from the center exposure of the apparatus bays.
- The brass poles have been removed and replaced with a single slide centrally located to reduce impact injury and speed up response time.

FIRE STATION #114 – SECOND FLOOR PLAN

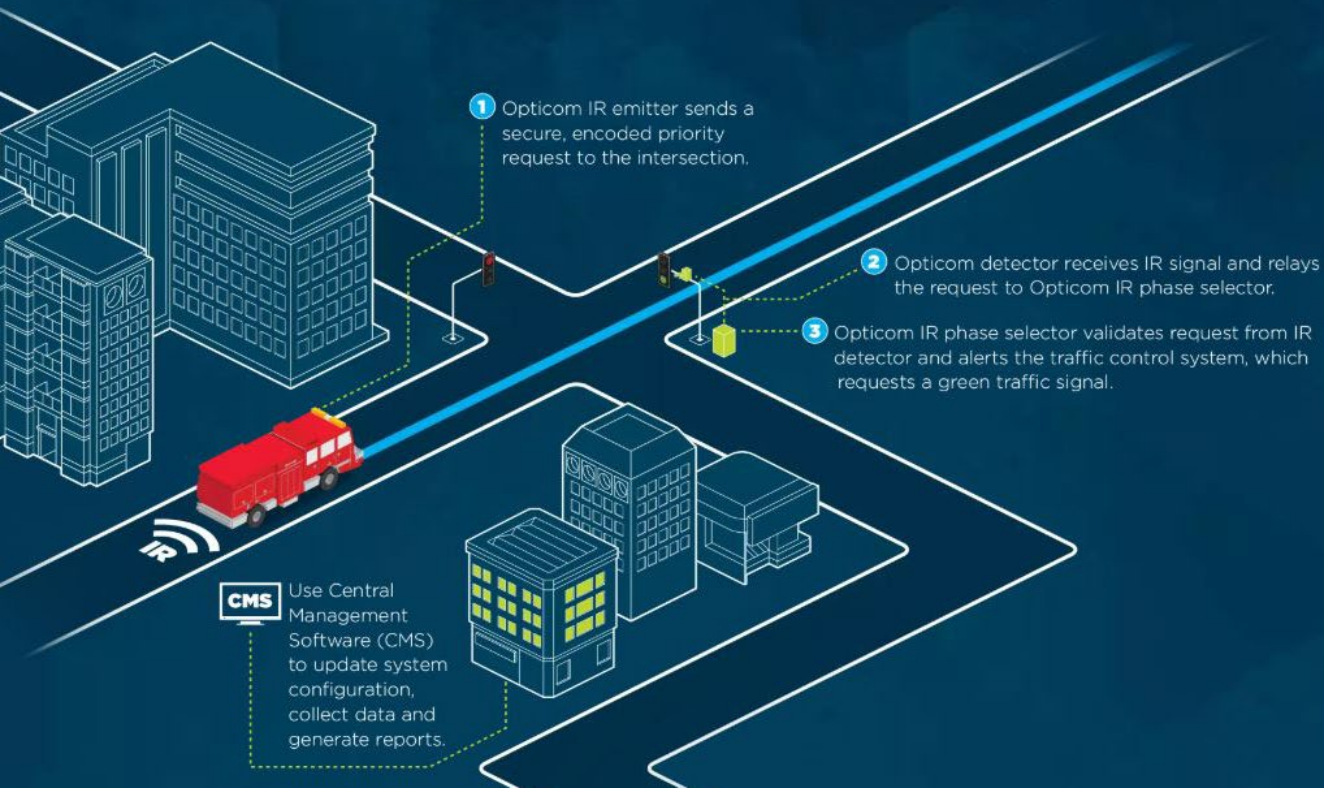


- The redesign of the mechanical systems allowed better individual environment comfort control in each bunk room.
- The fresh air make up and exhaust systems are designed to allow for better functioning environments.
- The design of the station’s finishes are conducive for better maintenance and sustainability.

FIRE STATION #114 – OPTICOM SYSTEM

HOW IT WORKS

Proven results from GTT solutions.



- An OptiCom Emergency Vehicle Pre-emption (EVP) device will be installed in each fire truck to control the traffic signals.
- The OptiCom EVP system is used to reduce the need for fire alarm noise.

REDUCE
INTERSECTION
CRASH
RATES



IMPROVE
RESPONSE TIMES
by up to

25%*



OPTICOM™
BENEFITS



**pompano
beach**
Florida's Warmest Welcome

CITY OF POMPANO BEACH NEW FIRE STATION #114

DESIGN/BUILD BY:



Di Pompeo
Construction Corporation
A Family Tradition Since 1927

SALTZ MICHELSON
ARCHITECTS