

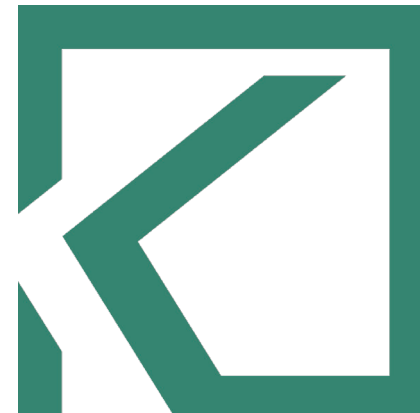
POMPANO PARKS GO BONDS

YOUTH SPORTS COMPLEX

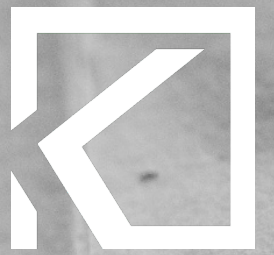
CENTENNIAL PARK

PUBLIC MEETING #1

MAY 1, 2019



Tradition, Integrity, Excellence





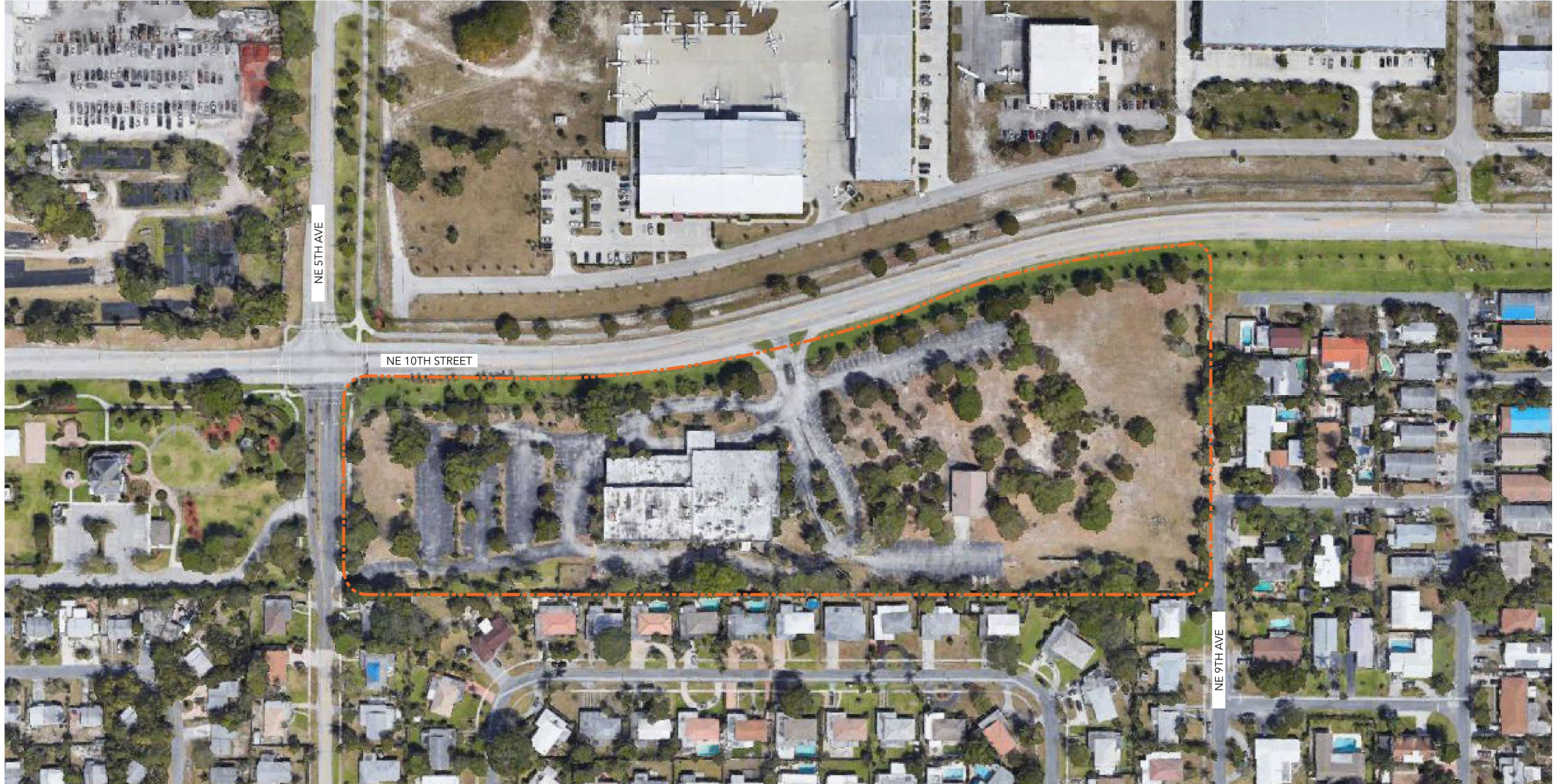
CENTENNIAL PARK
+/- 5 ACRES

YOUTH SPORTS COMPLEX
+/- 12 ACRES



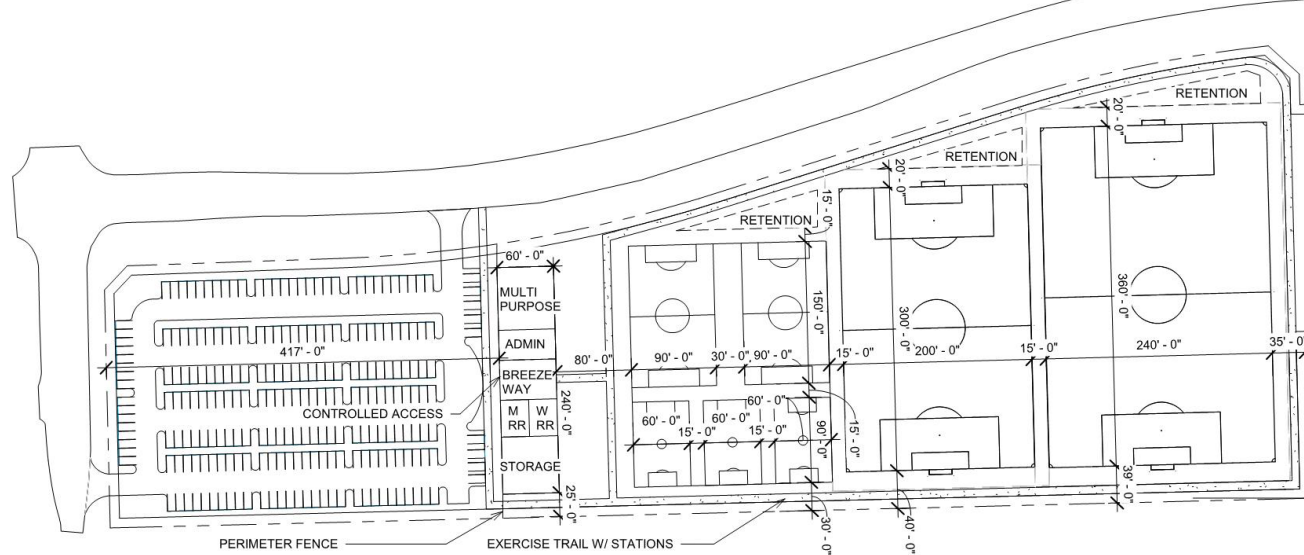
YOUTH SPORTS COMPLEX

EXISTING AERIAL



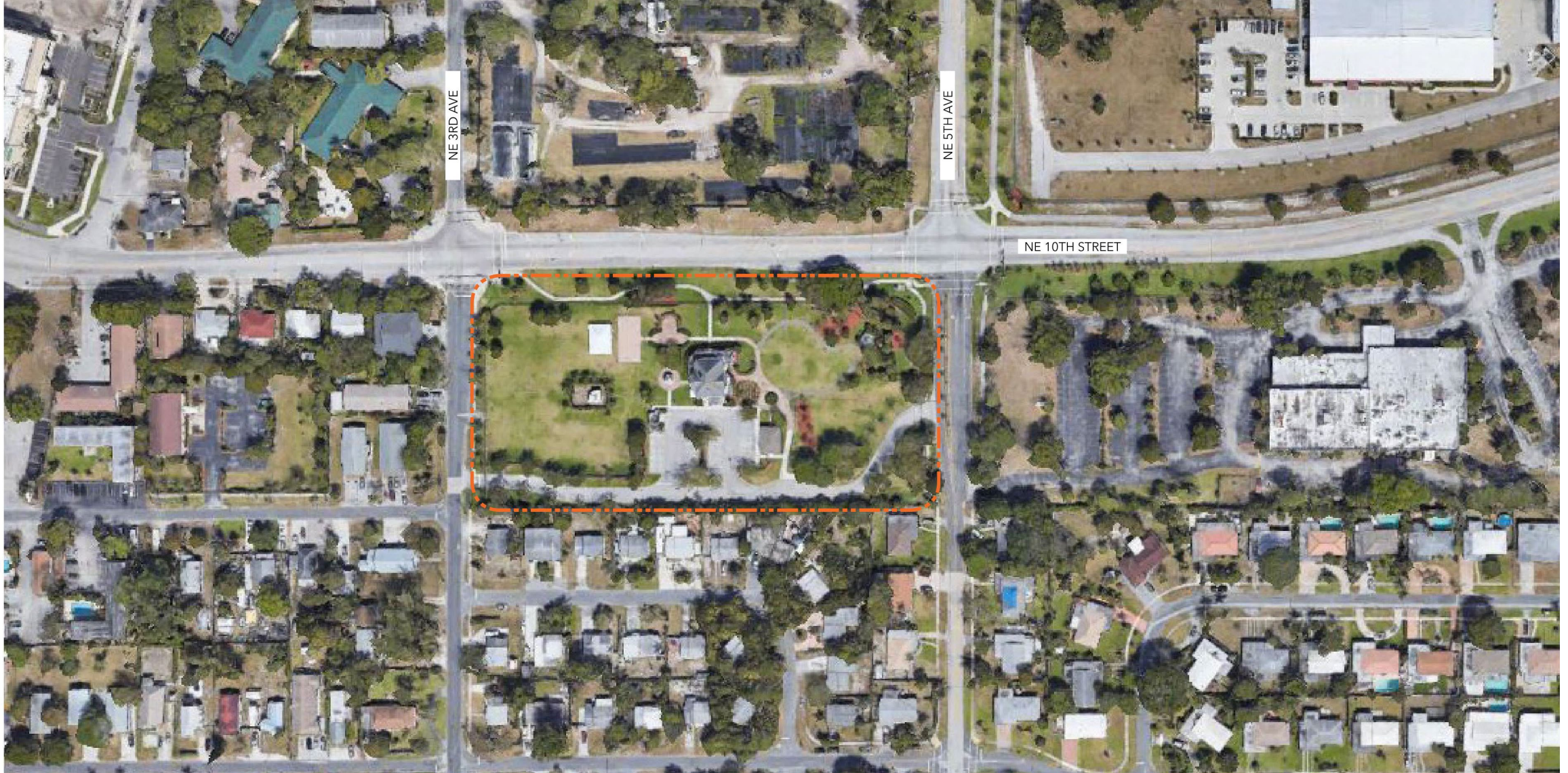
YOUTH SPORTS COMPLEX

PREVIOUS CONCEPTUAL DESIGNS



CENTENNIAL PARK

EXISTING AERIAL



CENTENNIAL PARK

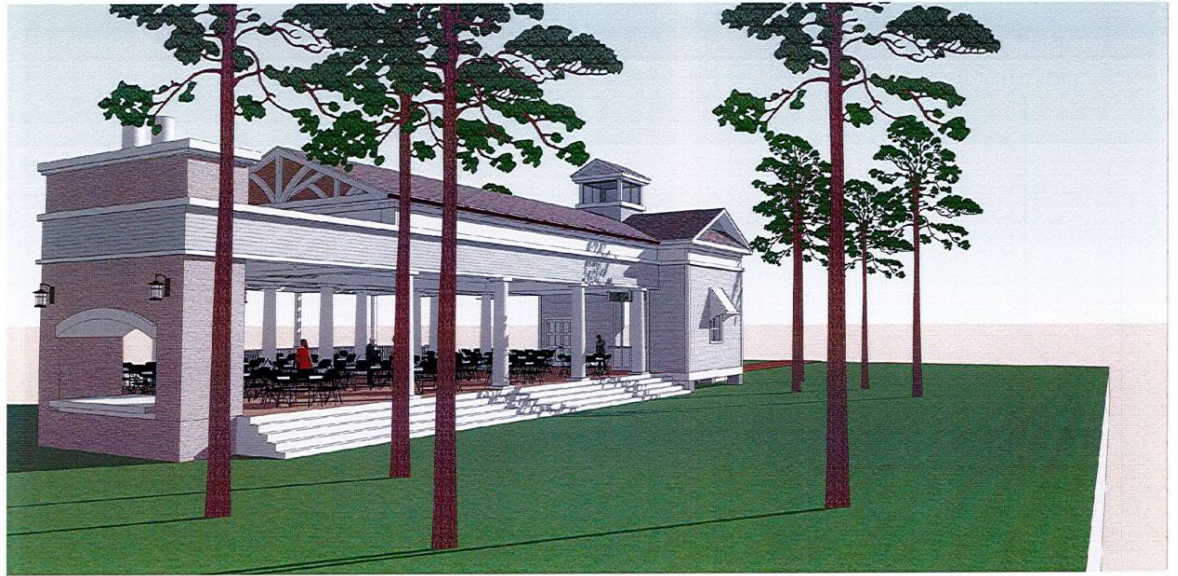
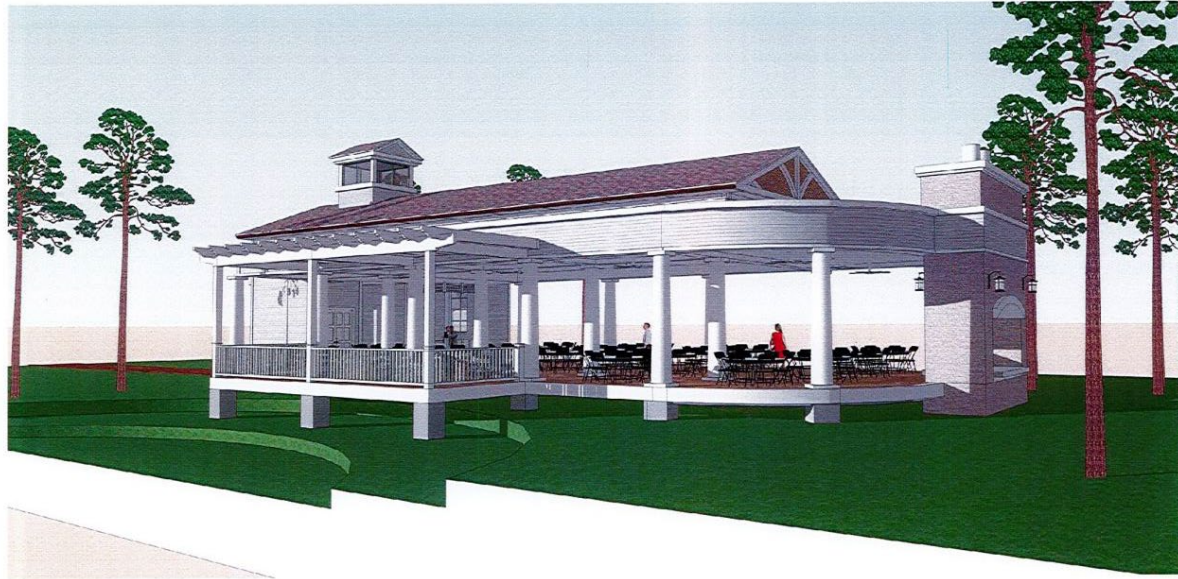
SAMPLE McDOUGALD HOUSE

- Historic Museum Home built in 1916 by Albert Neal Sample
- On National and Local Register of Historic Places
- Host approximately 7,500 visitors per year offering opportunities to learn about the unique south Florida architecture, early 20th century lifestyles and discover the regional connections to agricultural and coastal history.
- Guests may also visit, picnic and enjoy the 5-acre Centennial Park, in which the home sits.



CENTENNIAL PARK

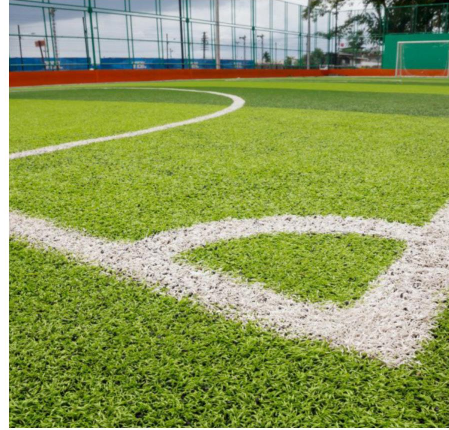
PREVIOUS PAVILION CONCEPTUAL DESIGN



SPORTS FIELD



ARTIFICIAL TURF



NATURAL TURF



AUDIENCE SEATING



BLEACHERS



LAWN CHAIRS



POMPANO BEACH YOUTH SPORTS COMPLEX



PLANTING STYLE



NATURAL



FORMAL



DRAINAGE SWALES



NATURAL/BIO-SWALE



STANDARD



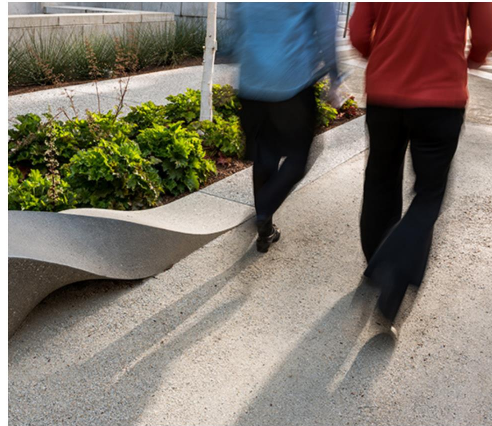
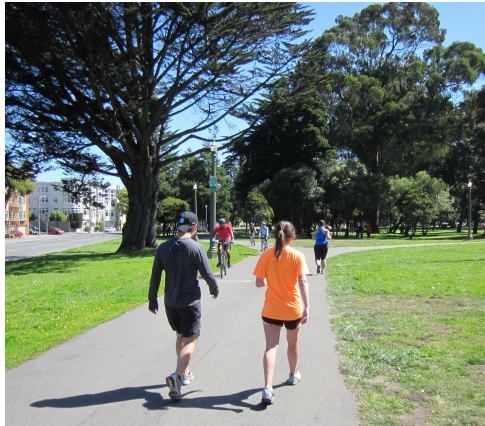
FURNISHINGS



BENCHES

RECEPTACLES

WALKWAY SURFACES



ASPHALT

CRUSHED STONE

CONCRETE

PAVERS



POMPANO BEACH YOUTH SPORTS COMPLEX



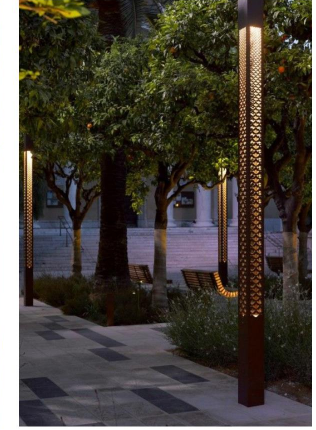
LIGHTING



PARKING LOT



PEDESTRIAN



BOLLARDS



FIELD LIGHTS



ACTIVITIES



EXERCISE

PLAY

SHADE



STRUCTURE

CANOPY TREES



POMPANO BEACH YOUTH SPORTS COMPLEX



QUESTIONS?

