

Kimley»Horn



Traf Tech  
ENGINEERING, INC.



DIXIE HWY IMPROVEMENTS PROJECT (ATLANTIC BLVD)  
#19355  
May 15, 2019

# INTRODUCTION

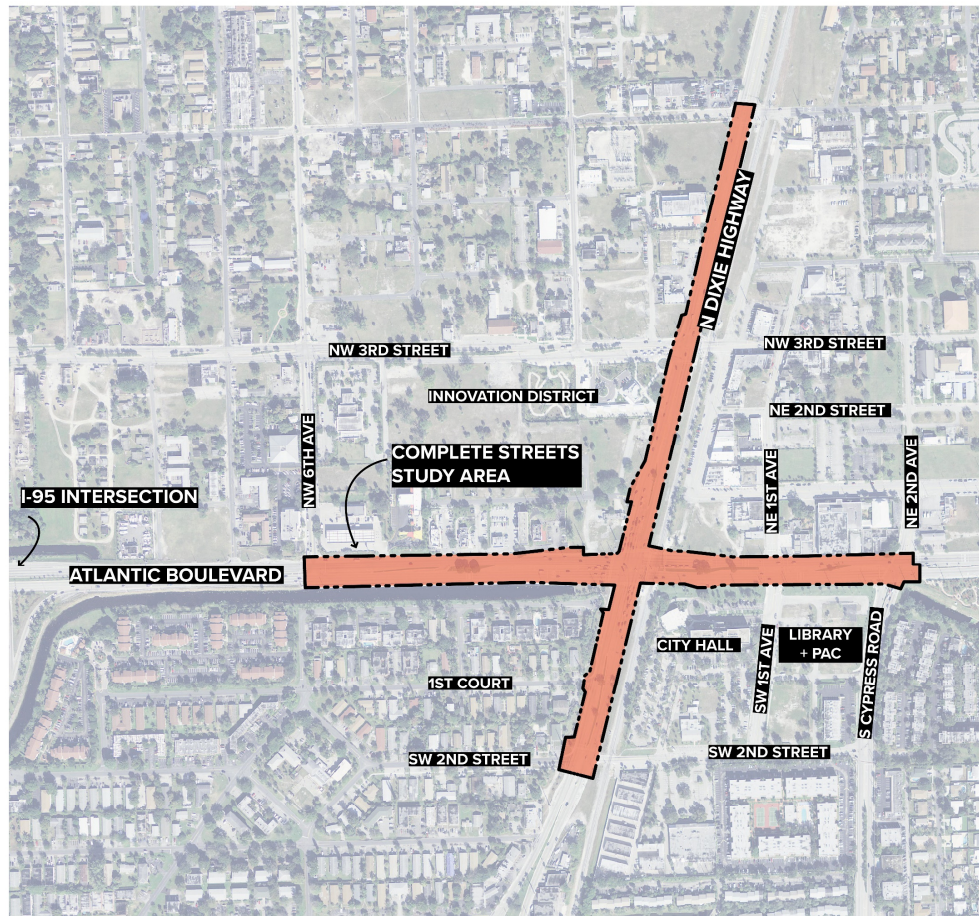
## Key Points:

- Why Pompano?
- Contextual Analysis
- Conceptual Design
- Conceptual Design Enlargements
- Conceptual Design Sections
- Next Steps



Complete Streets Character Imagery

# WHY POMPANO?



**Progress as a city**

**Build a downtown**

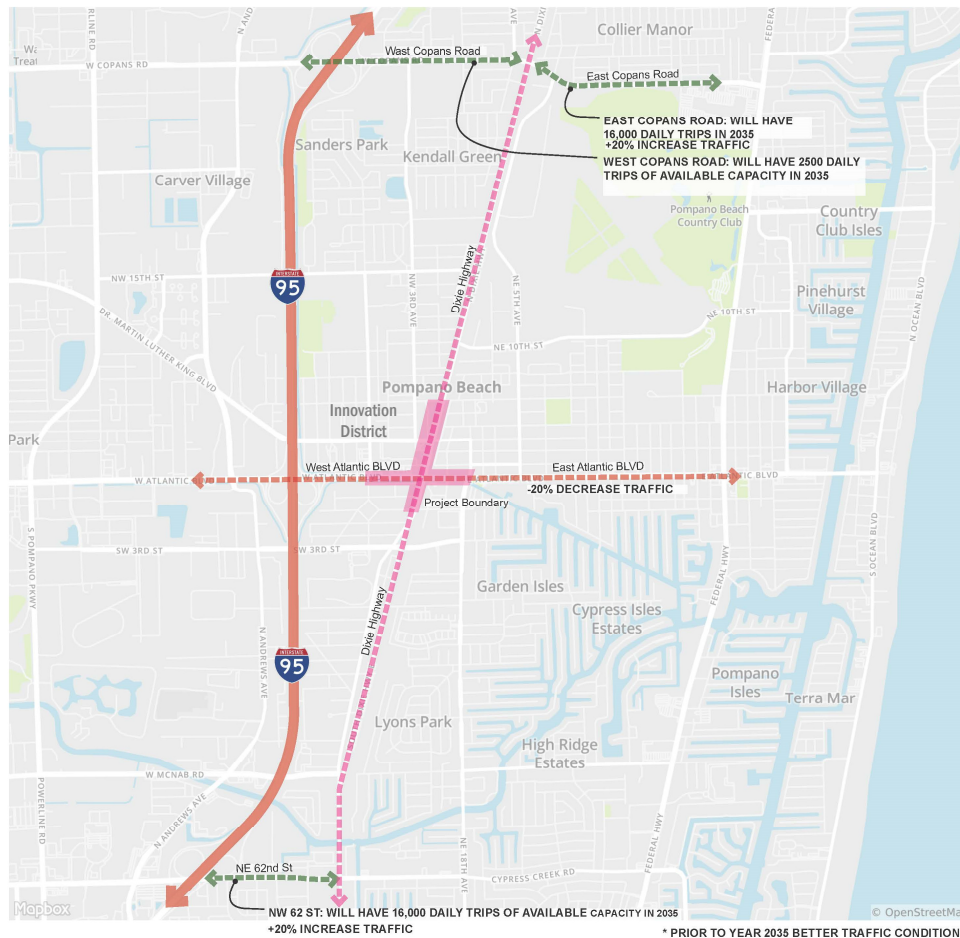
- Redevelopment**
- Jobs
  - Increased tax base
  - Improved services

**Connect downtown to the beach and the beach to downtown (ETOC)**

**Infrastructure improvement that catalyzes redevelopment**

**Adding walkability and sense of place**

# REGIONAL TRAFFIC RELOCATION



## ATLANTIC BOULEVARD:

- Posted speed limit of 35 mph
- Two travel lanes in each direction
- Current traffic volumes per day:
  - 64,300 - 24,700 vehicles west of Dixie Highway
  - 53,500 vehicles east of Dixie Highway
- The acceptable carrying capacity of Atlantic Boulevard ranges from 59,900 - 32,400 vehicles per day

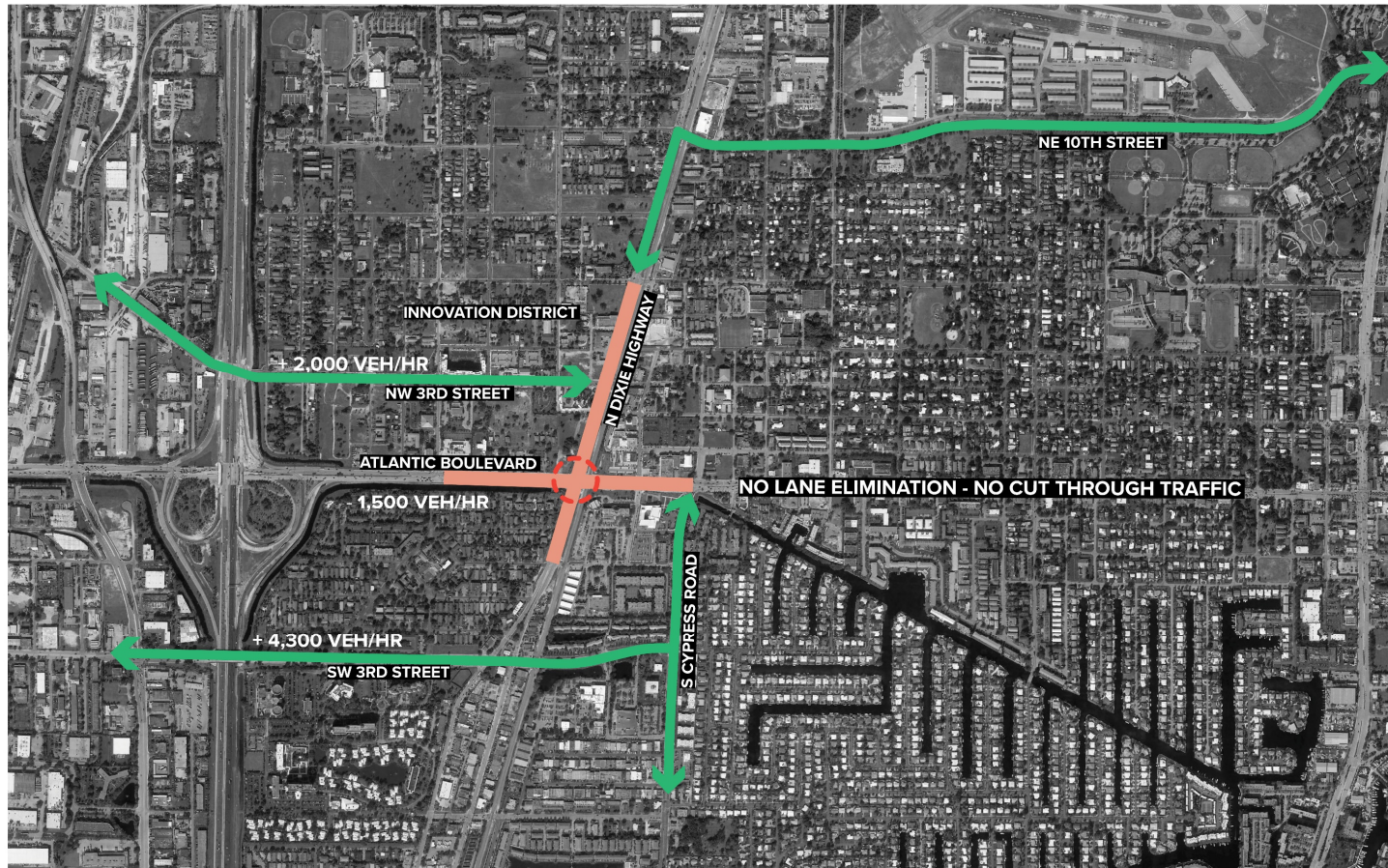
## DIXIE HIGHWAY:

- Posted speed limit of 35 mph north of Atlantic Boulevard
- Posted speed limit of 30 mph south of Atlantic Boulevard
- Two travel lanes in each direction
- Current traffic volumes per day:
  - 26,300 vehicles south of Atlantic Boulevard
  - 30,800 vehicles north of Atlantic Boulevard
- The acceptable carrying capacity of Dixie Highway is 32,400 vehicles per day

**Copans Road has excess capacity for Atlantic Boulevard diverted trips.**

**Cypress Road has excess capacity for Atlantic Boulevard diverted trips.**

# TRAFFIC NETWORK: BYPASS ROUTES

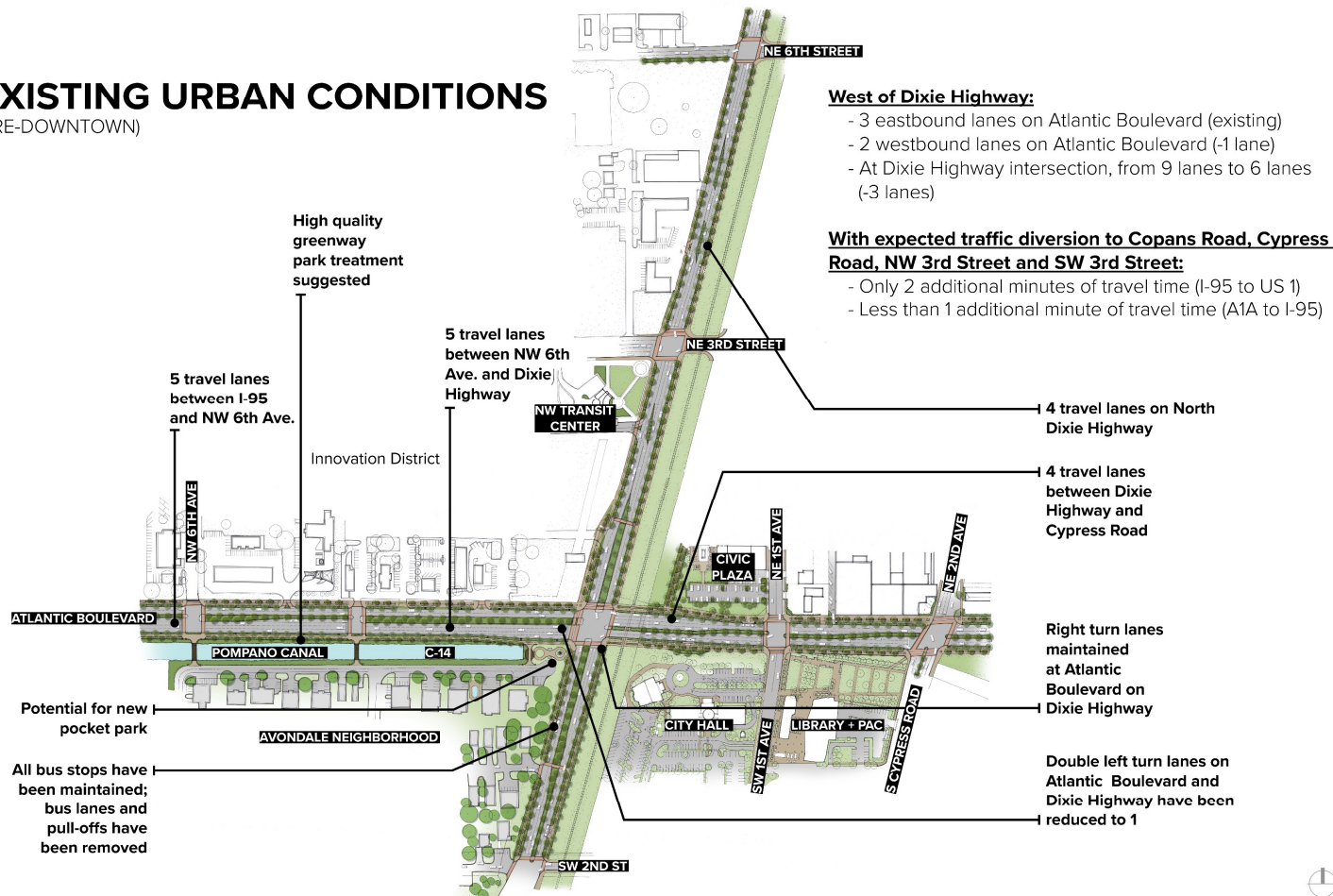


- SITE
- ↔ BYPASS ROUTE
- ⊘ KEY INTERSECTION

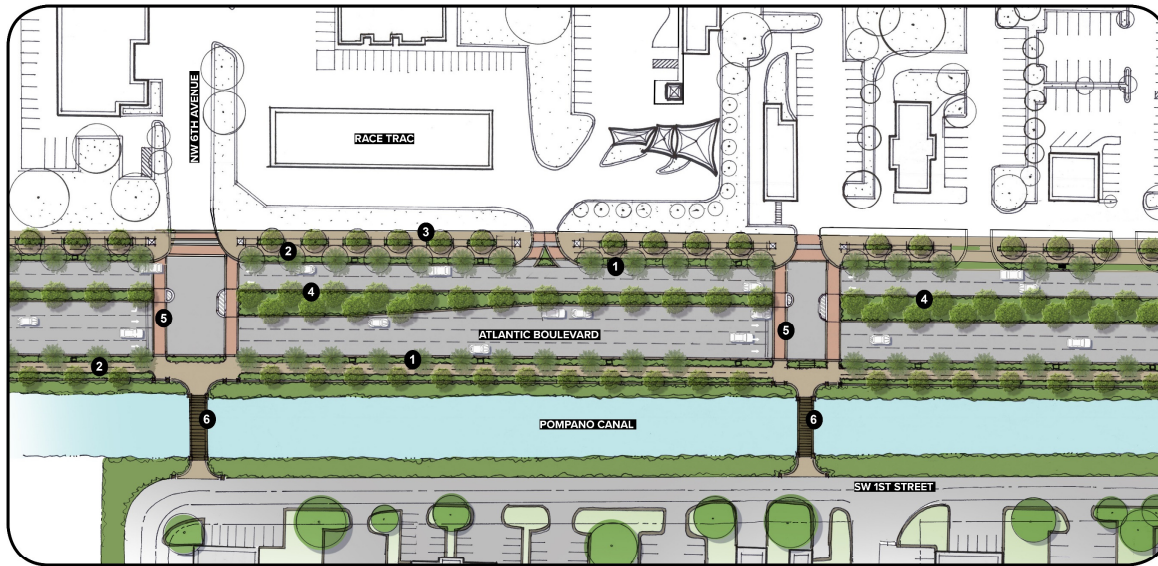
# CONCEPTUAL DESIGN

## EXISTING URBAN CONDITIONS

(PRE-DOWNTOWN)



# CONCEPTUAL DESIGN: ATLANTIC BOULEVARD



6 2 proposed pedestrian bridges over canal



1 Minimum 5 foot curbside tree lawn with street trees



2 10-12 foot multi-use pedestrian and bike cultural trail



3 6-8 foot urban walkway



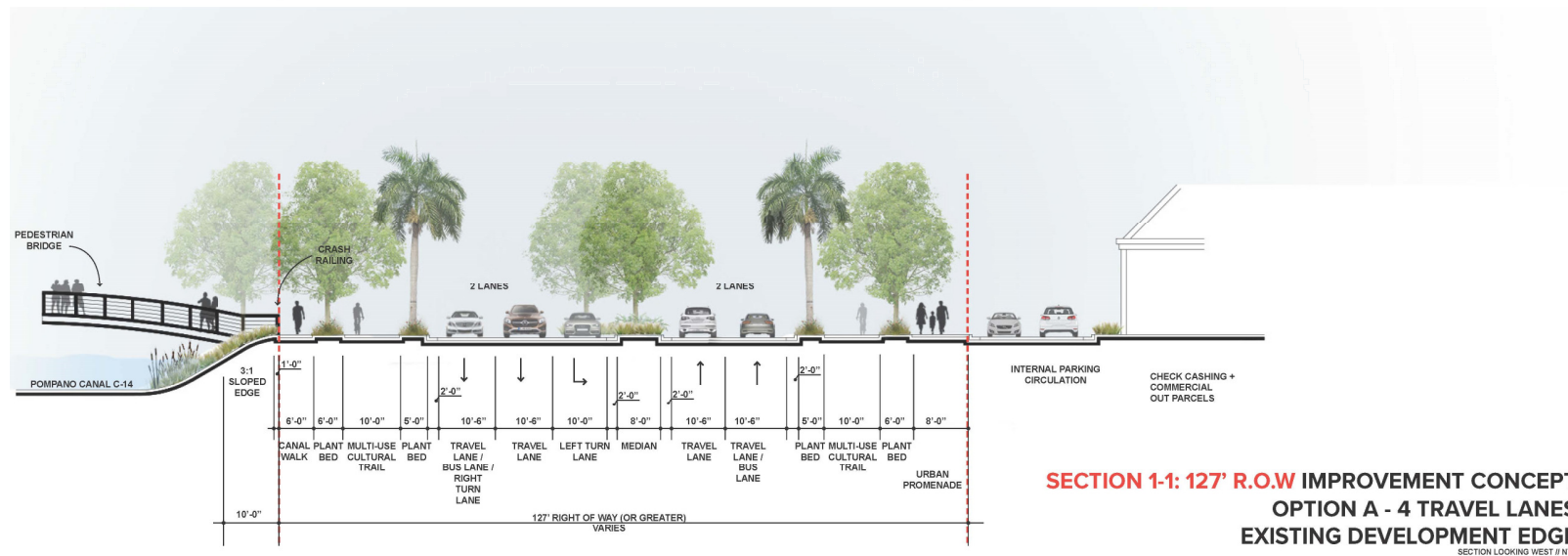
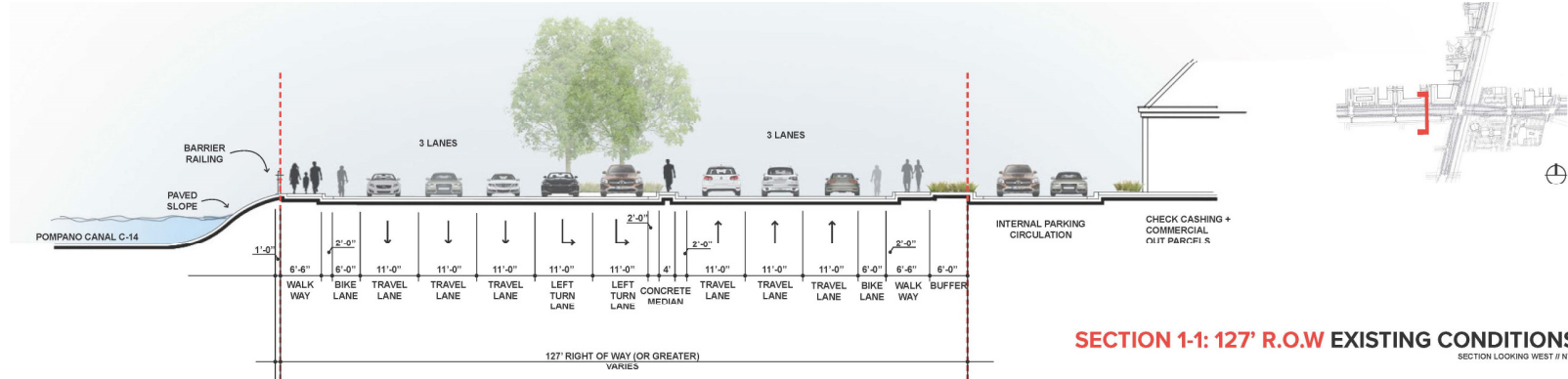
4 10-14 foot widened landscape medians



5 Newly defined crosswalks for cyclists and pedestrians

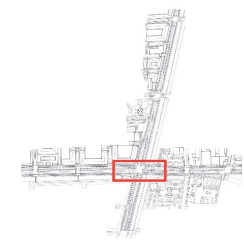
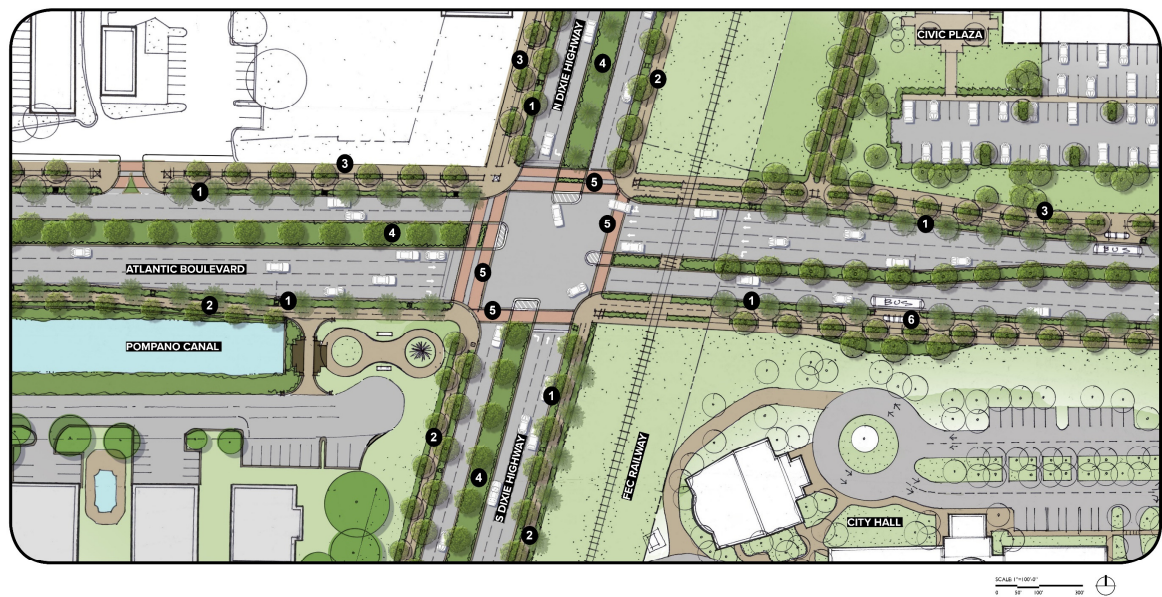
SCALE 1"=100'-0"  
0 50 100 200

# ROADWAY SECTIONS: ATLANTIC BOULEVARD





# CONCEPTUAL DESIGN: NORTH DIXIE HIGHWAY



6 Transit shelter locations moved to curb



1 Minimum 5 foot curbside tree lawn with street trees



2 10-12 foot multi-use pedestrian and bike cultural trail



3 6-8 foot urban walkway



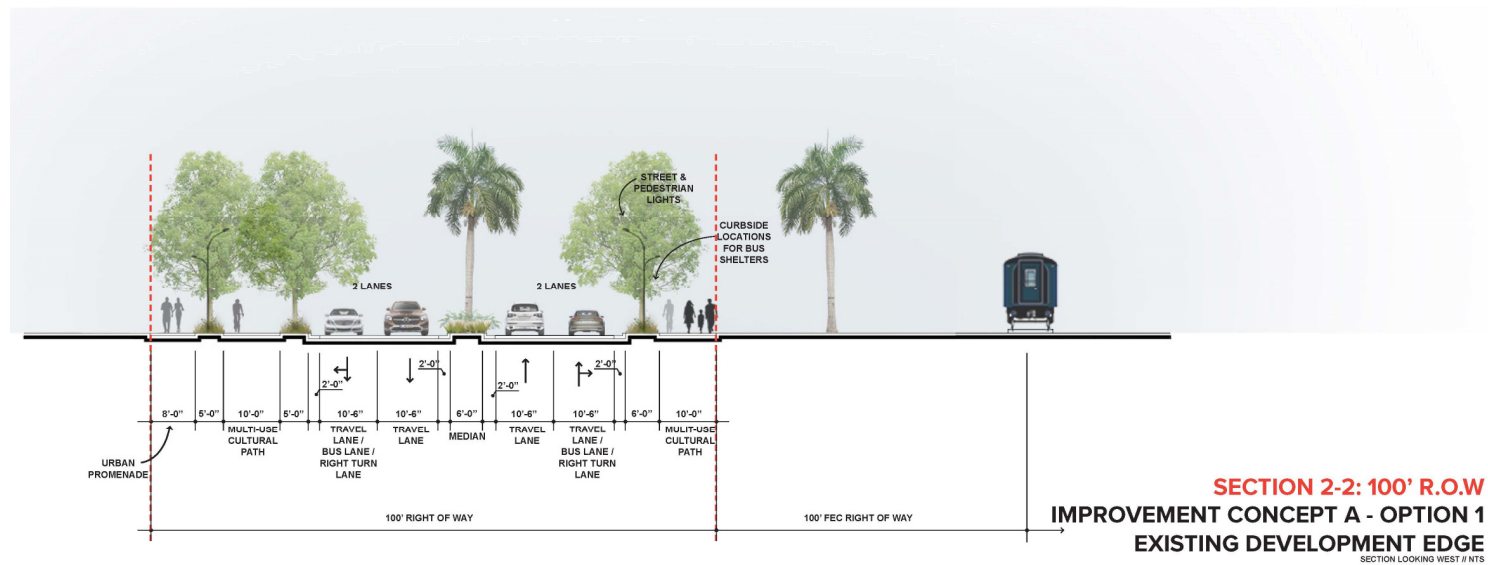
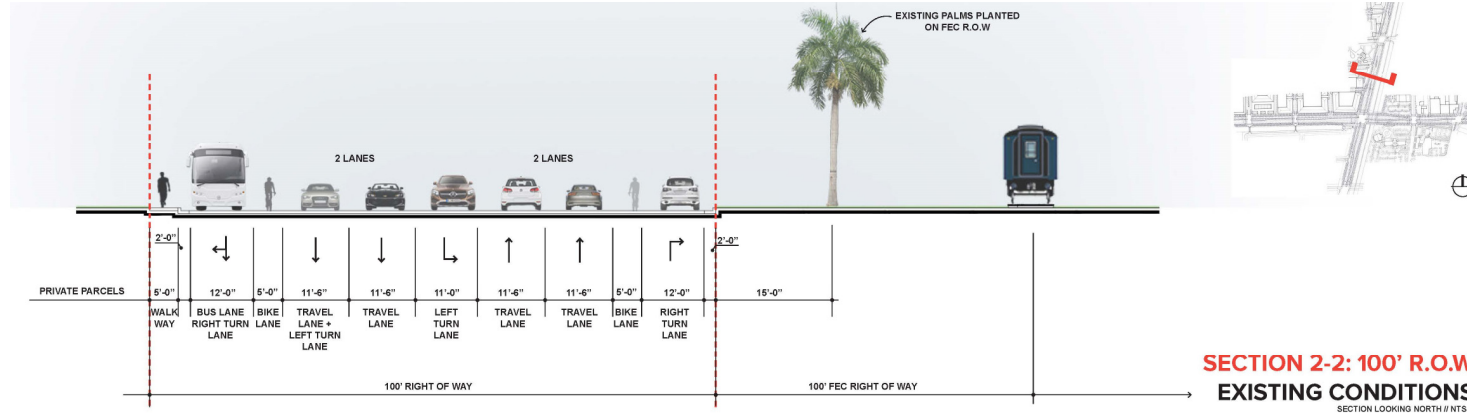
4 10-14 foot widened landscape medians



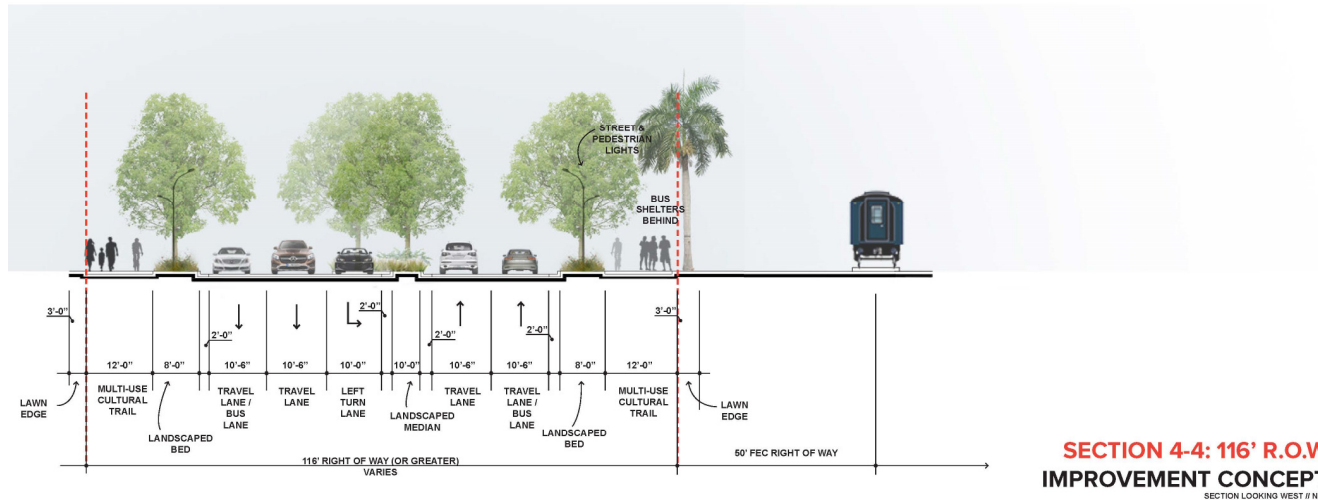
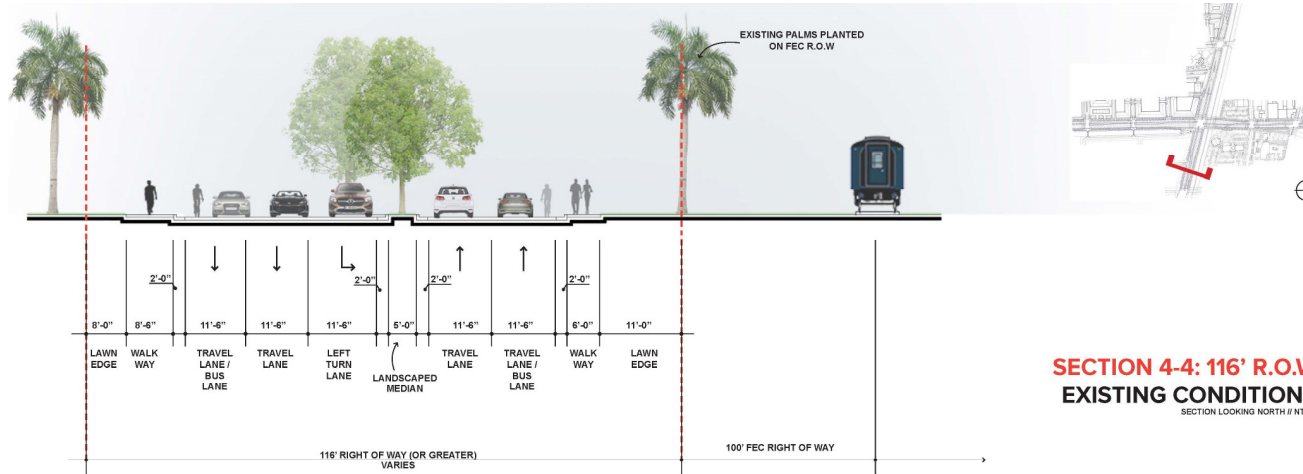
5 Newly defined crosswalks for cyclists and pedestrians

SCALE: 1"=100'-0"  
0 30' 60'

# ROADWAY SECTIONS: NORTH DIXIE HIGHWAY



# ROADWAY SECTIONS: SOUTH DIXIE HIGHWAY



## NEXT STEPS

Public Meeting #1: May 15<sup>th</sup>

Public Meeting #2: July 17<sup>th</sup>

