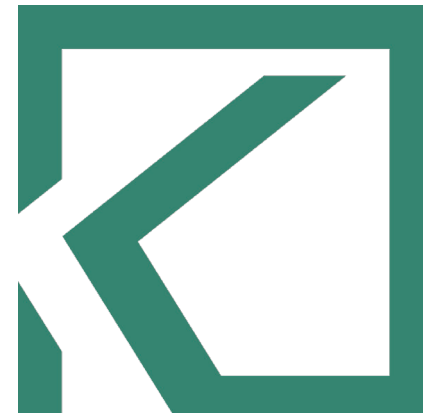


POMPANO PARKS GO BONDS

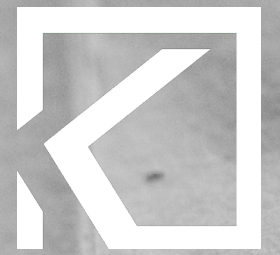
NORTH POMPANO PARK

PUBLIC MEETING #2

June 17, 2019



Tradition, Integrity, Excellence



NORTH POMPANO PARK

EXISTING AERIAL




NORTH POMPANO PARK

PREVIOUS CONCEPTUAL DESIGN




RESULTS FROM MEETING #1

SPORTS FIELD




ARTIFICIAL TURF **NATURAL TURF**

AUDIENCE SEATING



BLEACHERS **LAWN CHAIRS**

NORTH POMPANO PARK



ACTIVITIES



EXERCISE **PLAY**

SHADE



STRUCTURE **CANOPY TREES**

NORTH POMPANO PARK



RESULTS FROM MEETING #1

PLANTING STYLE



NATURAL

FORMAL

DRAINAGE SWALES



NATURAL/BIO-SWALE

STANDARD



NORTH POMPAÑO PARK



FURNISHINGS



BENCHES

RECEPTACLES

WALKWAY SURFACES



ASPHALT

CRUSHED STONE

CONCRETE

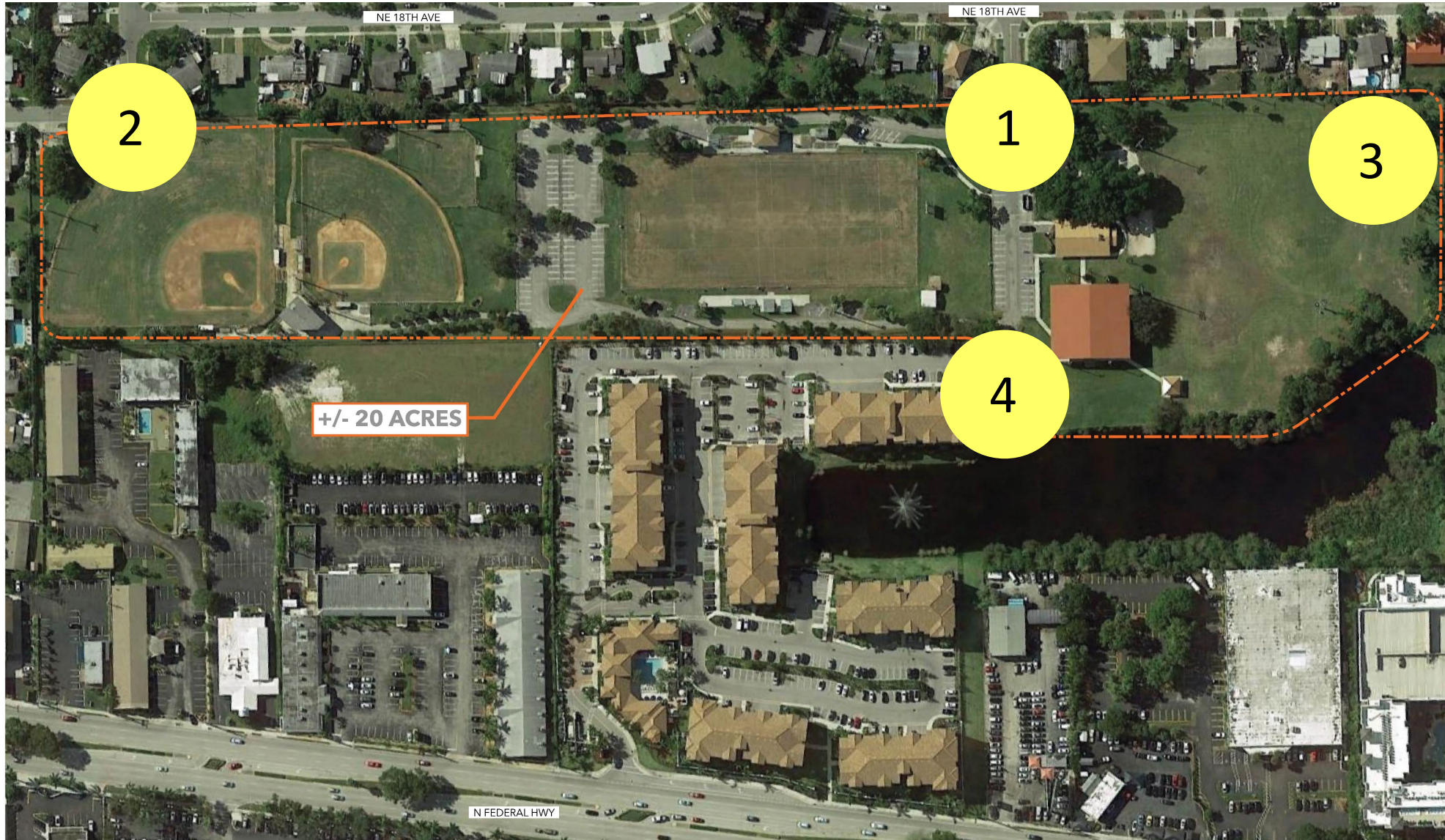
PAVERS



NORTH POMPAÑO PARK



SITE ACCESS



TRAFFIC DATA



301 East Atlantic Boulevard
Pompano Beach, Florida 33060

Traffic Data

Figure 1
North Pompano Park
Palm Beach County, Florida

CONCEPT 1



LEGEND

- | | |
|--|-----------------------------------|
| 1. EXISTING STRUCTURE | 8. BLEACHERS |
| 2. PROPOSED STRUCTURE
"TROPHY PAVILION" | 9. FLEXIBLE OPEN SPACE |
| 3. EXISTING PARKING | 10. EXISTING PLAYGROUND |
| 4. ADDITIONAL PARKING | 11. ADDITIONAL PLAYGROUND AREA |
| 5. MAIN ENTRANCE | 12. DOCK FOR FISHING/WATER ACCESS |
| 6. SECONDARY ENTRANCE | 13. PICNIC AREA |
| 7. MULTI-PURPOSE RECTANGULAR FIELD | 14. PEDESTRIAN PATH |
| | 15. FITNESS EQUIPMENT AREA |

CONCEPT DATA

- PARKING CALCULATION: 225 SPACES
- SPORTS FIELDS: 6.5 ACRES
- OPEN SPACE (SF): 8.5 ACRES
- PEDESTRIAN PATH: 0.6 MILES

CONCEPT 2

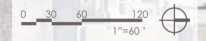


LEGEND

- | | |
|------------------------------------|-----------------------------------|
| 1. EXISTING STRUCTURE | 8. FLEXIBLE OPEN SPACE |
| 2. EXISTING PARKING | 9. EXISTING PLAYGROUND |
| 3. ADDITIONAL PARKING | 10. ADDITIONAL PLAYGROUND AREA |
| 4. MAIN ENTRANCE | 11. EMERGENCY FIRE ACCESS |
| 5. TRACK | 12. DOCK FOR FISHING/WATER ACCESS |
| 6. MULTI-PURPOSE RECTANGULAR FIELD | 13. PICNIC AREA |
| 7. BLEACHERS | 14. PEDESTRIAN PATH |

CONCEPT DATA

- PARKING CALCULATION: 265 SPACES
- SPORTS FIELDS: 4.6 ACRES
- FLEXIBLE OPEN SPACE (SF): 8.6 ACRES
- PEDESTRIAN PATH: 0.8 MILES



CONCEPT 2 ENLARGEMENT



LEGEND

- | | |
|------------------------------------|-----------------------------------|
| 1. EXISTING STRUCTURE | 8. FLEXIBLE OPEN SPACE |
| 2. EXISTING PARKING | 9. EXISTING PLAYGROUND |
| 3. ADDITIONAL PARKING | 10. ADDITIONAL PLAYGROUND AREA |
| 4. MAIN ENTRANCE | 11. EMERGENCY FIRE ACCESS |
| 5. TRACK | 12. DOCK FOR FISHING/WATER ACCESS |
| 6. MULTI-PURPOSE RECTANGULAR FIELD | 13. PICNIC AREA |
| 7. BLEACHERS | 14. PEDESTRIAN PATH |

QUESTIONS?

