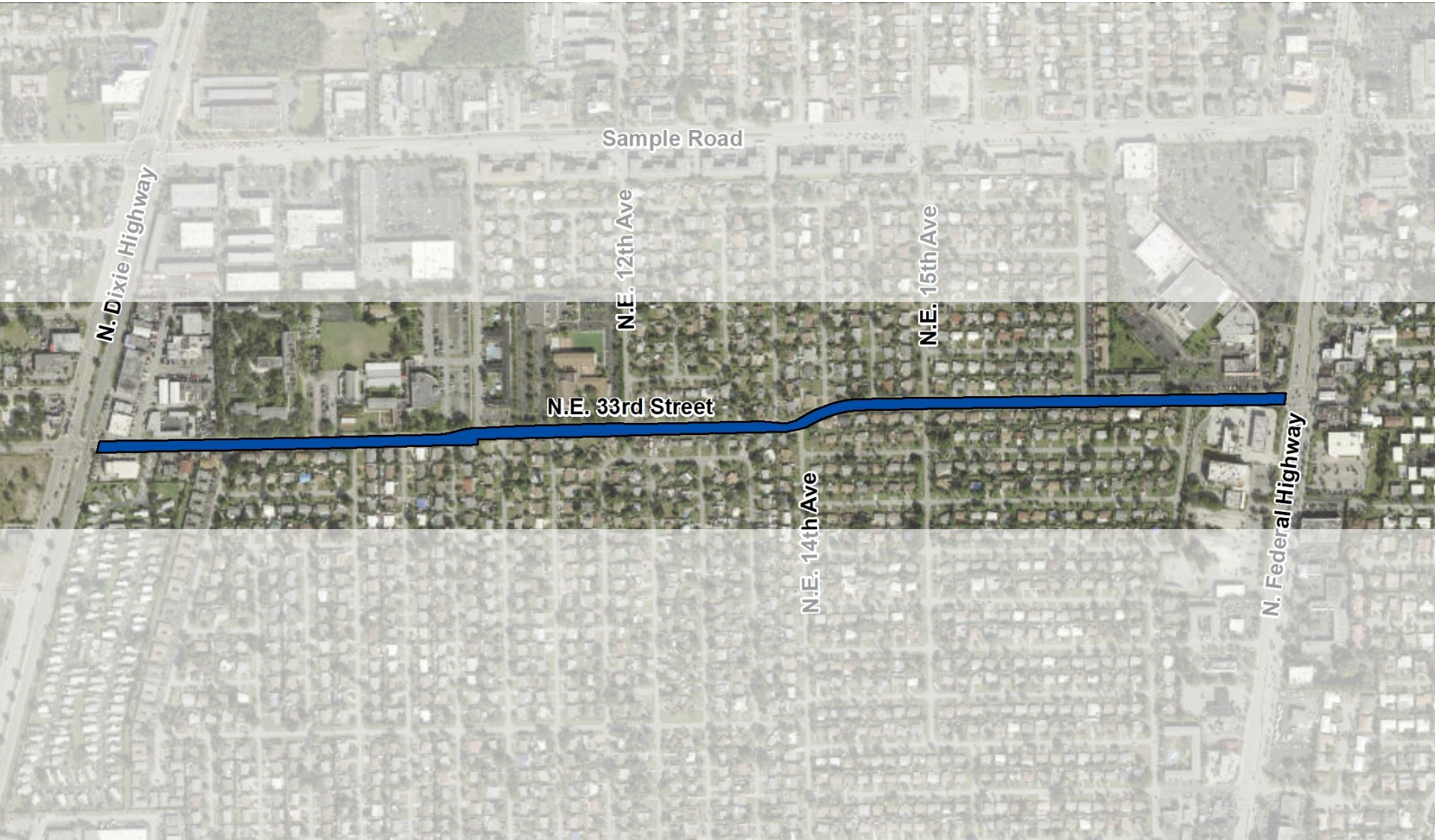




19359 N.E. 33RD STREET STREETSCAPE IMPROVEMENTS

Project Limits



Project Intent

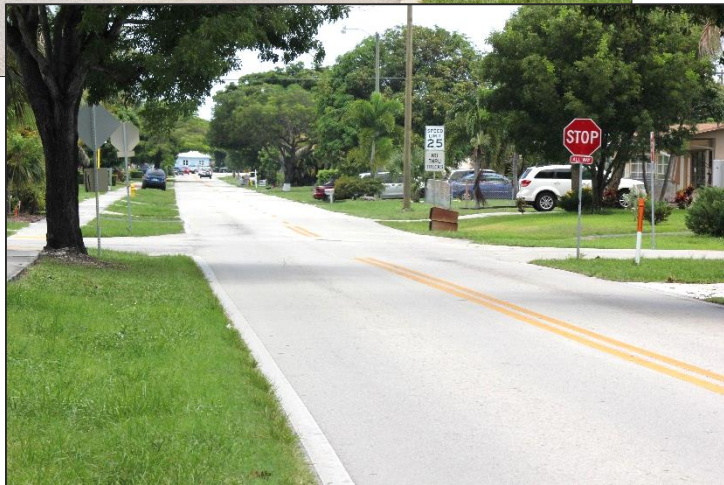
- Increased Traffic and Pedestrian Safety
 - Traffic Calming
 - Pavement Marking
- Increased Pedestrian Connectivity
 - Sidewalks
 - Crosswalks
- Corridor Beautification
 - Landscaping
 - Lighting
 - Roadway Improvements
- Improved Function
 - Drainage Improvements

Proposed Enhancements

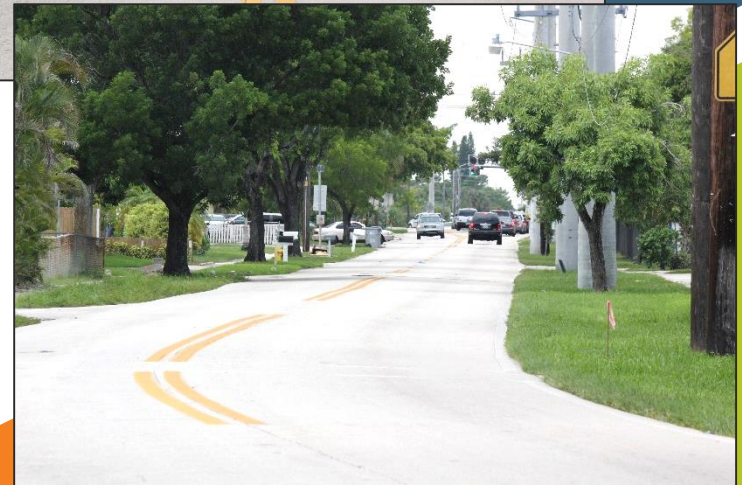
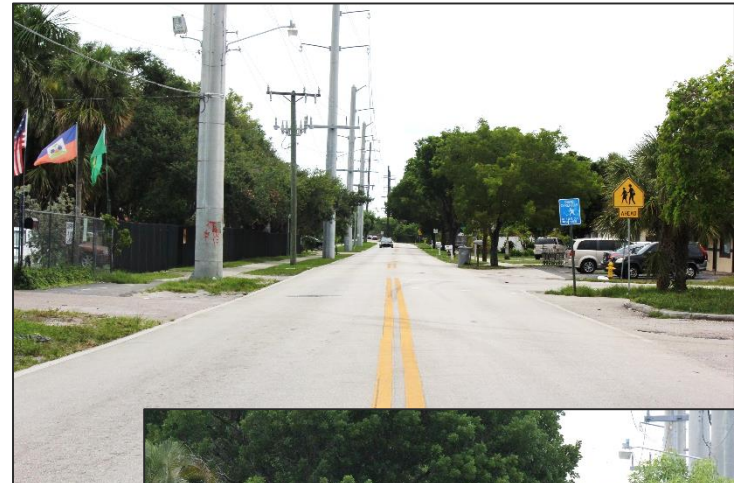
- Roadway Resurfacing
- Curbing
- Sidewalks
- Pavement Marking
- Lighting
- Landscaping
- Site Furnishings
- Raised Intersections

Existing Conditions

East Section

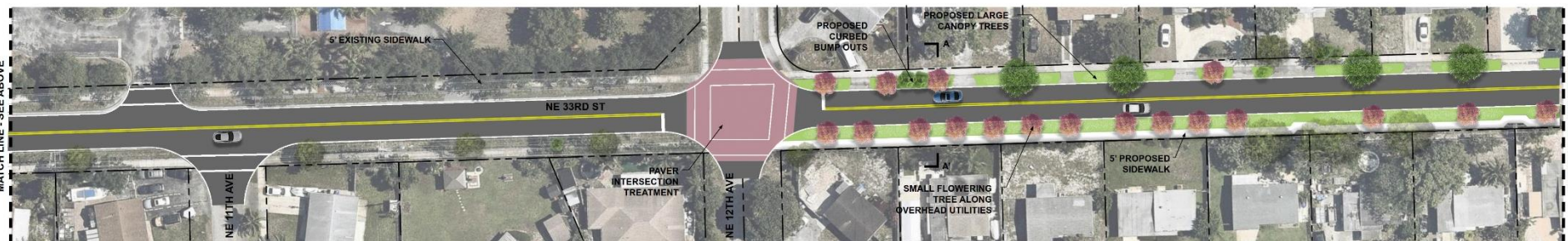
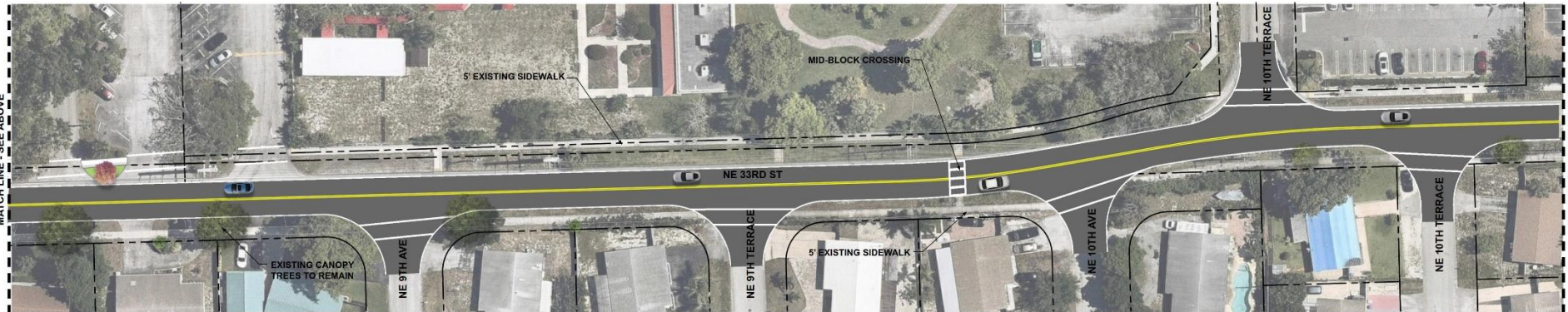


West Section



Proposed Enhancements

East Section



N.E. 33rd Street Streetscape Improvements

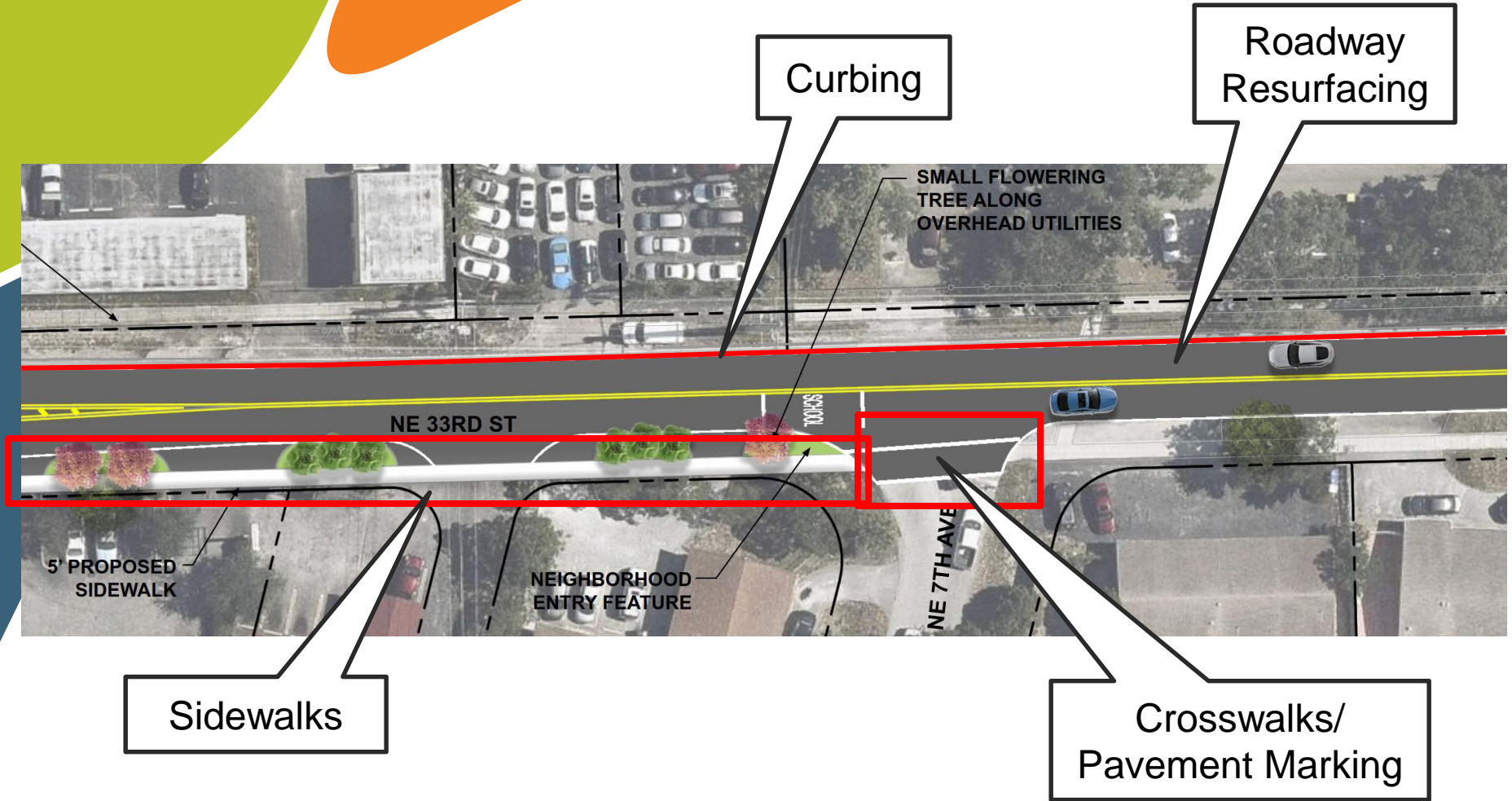
Proposed Enhancements

West Section



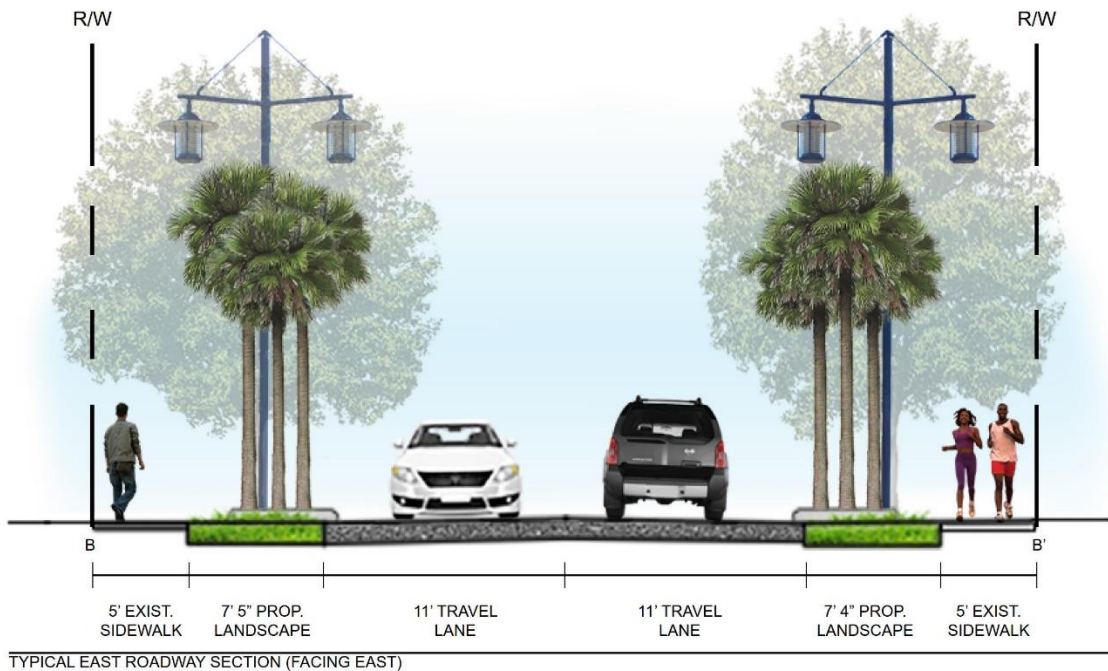
N.E. 33rd Street Streetscape Improvements

Proposed Enhancements



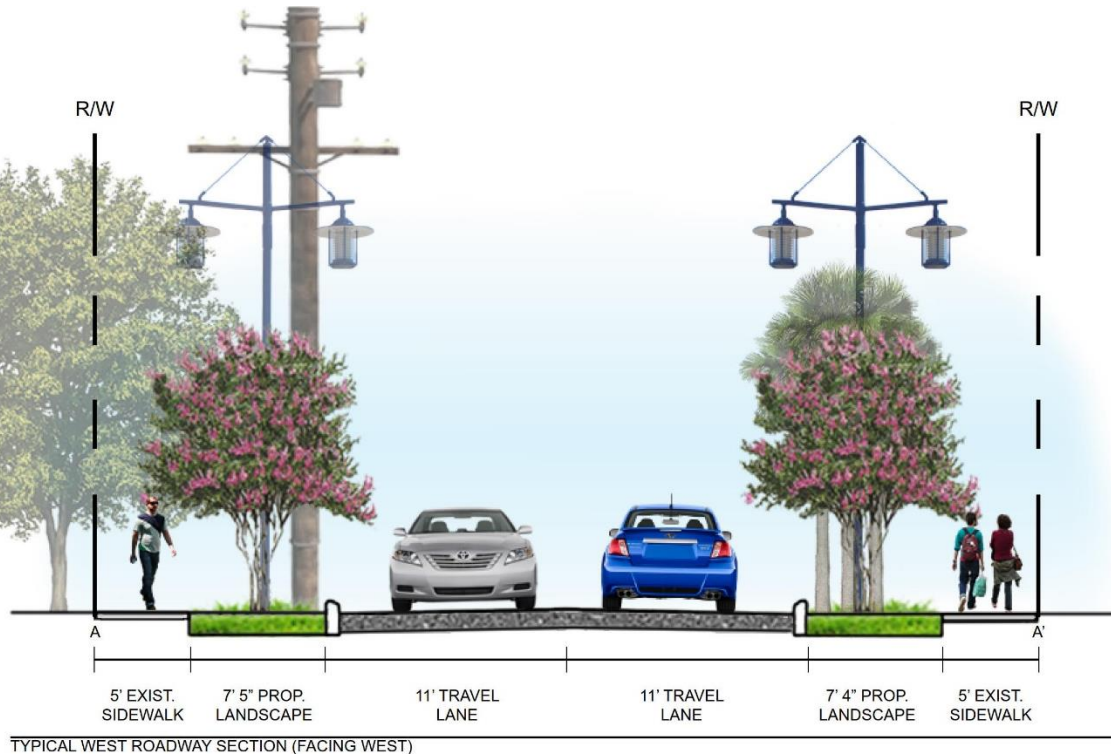
Proposed Enhancements

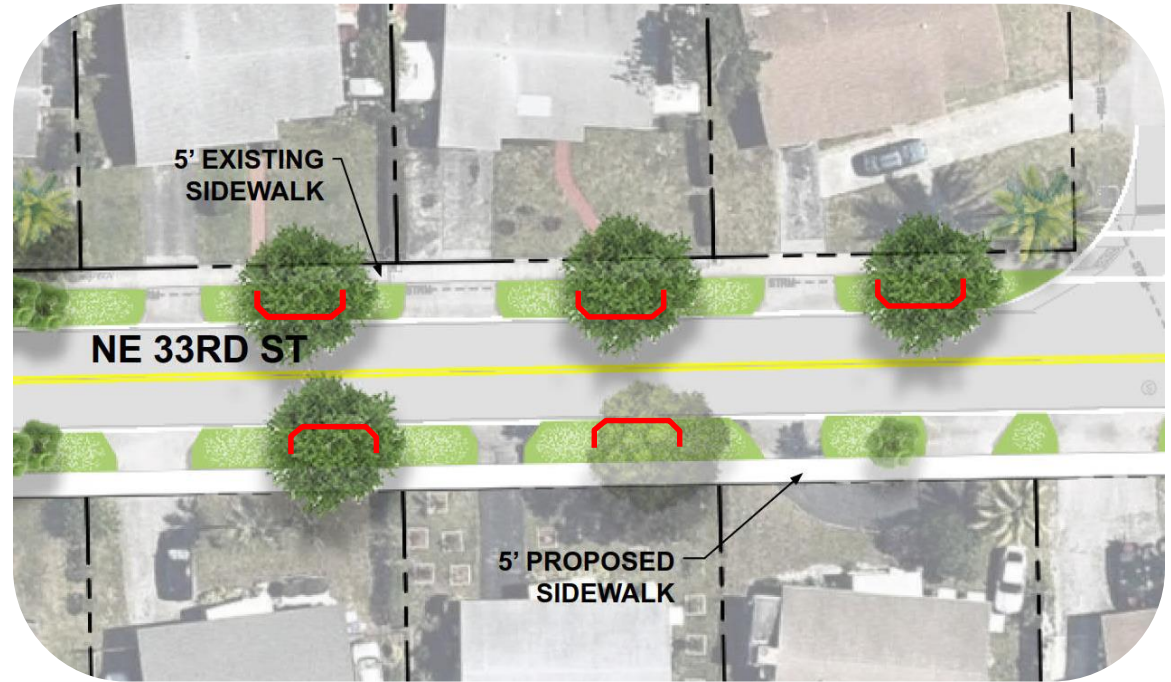
Typical Section-East



Proposed Enhancements

Typical Section-West





Proposed Enhancements

Curbed Swale



Proposed Enhancements

Curbed Swale

N.E. 33rd Street Streetscape Improvements



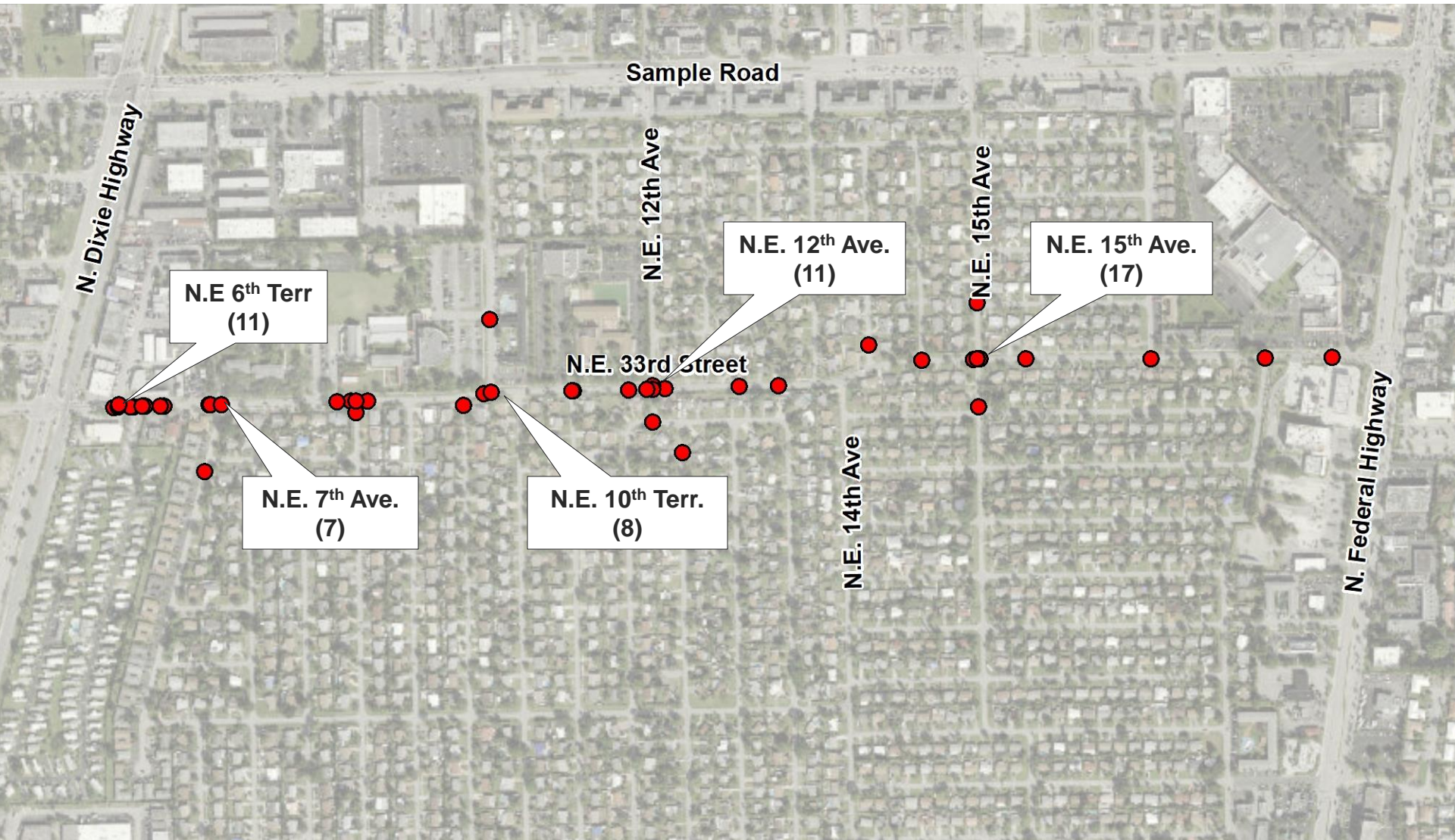
Proposed Enhancements

Bus Shelter and Site Furniture

N.E. 33rd Street Streetscape Improvements

Traffic Calming

Intersections with Highest Reported Crashes

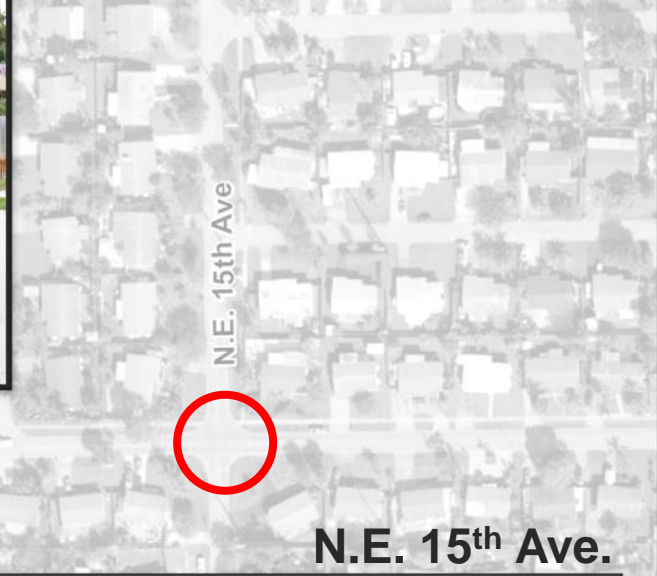


Traffic Calming

Raised Intersections



N.E. 14th Ave.



N.E. 14th Ave



Traffic Calming

Raised Intersections



Elevation of the entire intersection is raised and the transition between the elevation of the upstream pavement and the elevation at the intersection is discernable by the motorists. Functions as a speed table through an intersection.



Proposed Enhancements **Traffic Calming**

Raised Intersection

Speed tables are typically long enough for an entire wheelbase of a passenger car to rest on top. Brick pavers or other textured materials can be included to improve the aesthetics of the speed table. Preferred over speed humps to accommodate emergency vehicles.



Proposed Enhancements **Traffic Calming**

Speed Table



DISCUSSION