

Kimley»Horn

edsa

Traf Tech
ENGINEERING, INC.

KEITH

pompano
beach
FOR A BETTER WORLD



DIXIE HWY IMPROVEMENTS PROJECT (ATLANTIC BLVD)
#19355
July 17, 2019

INTRODUCTION

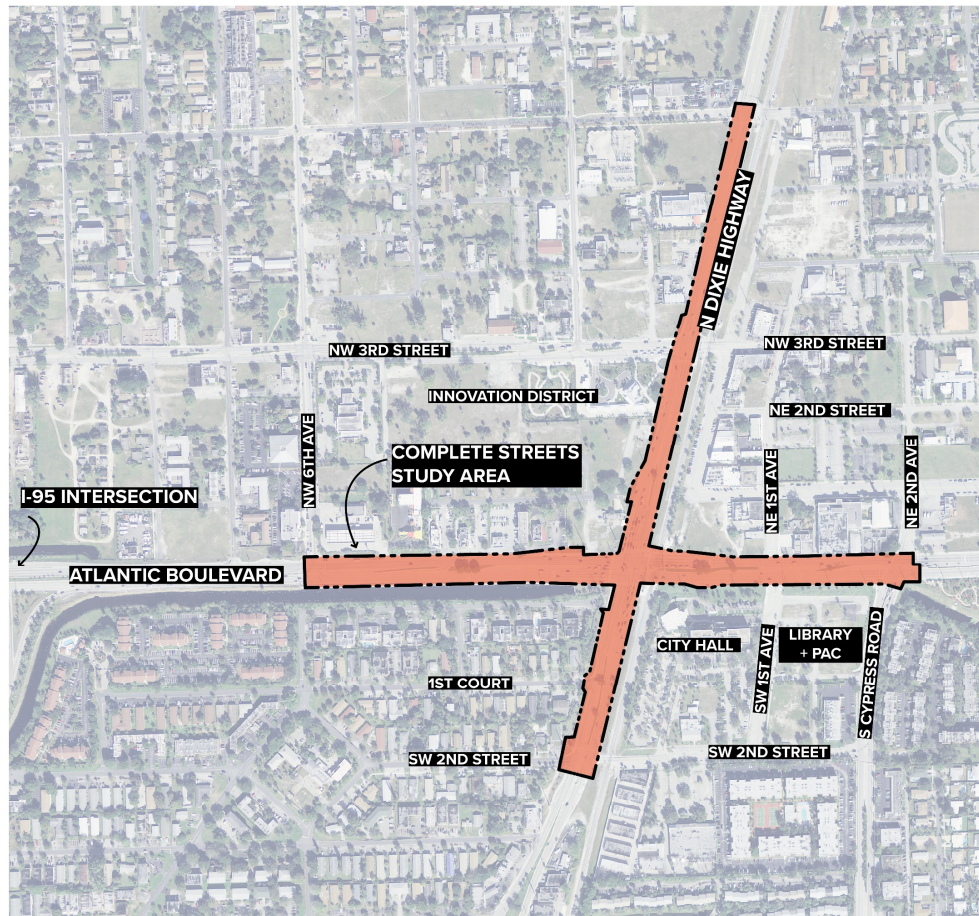
Key Points:

- Why Pompano?
- Conceptual Design
- Traffic Analysis
- Conceptual Design Enlargements + Sections
- Next Steps



Complete Streets Character Imagery

WHY POMPANO?



Progress as a city

Build a downtown

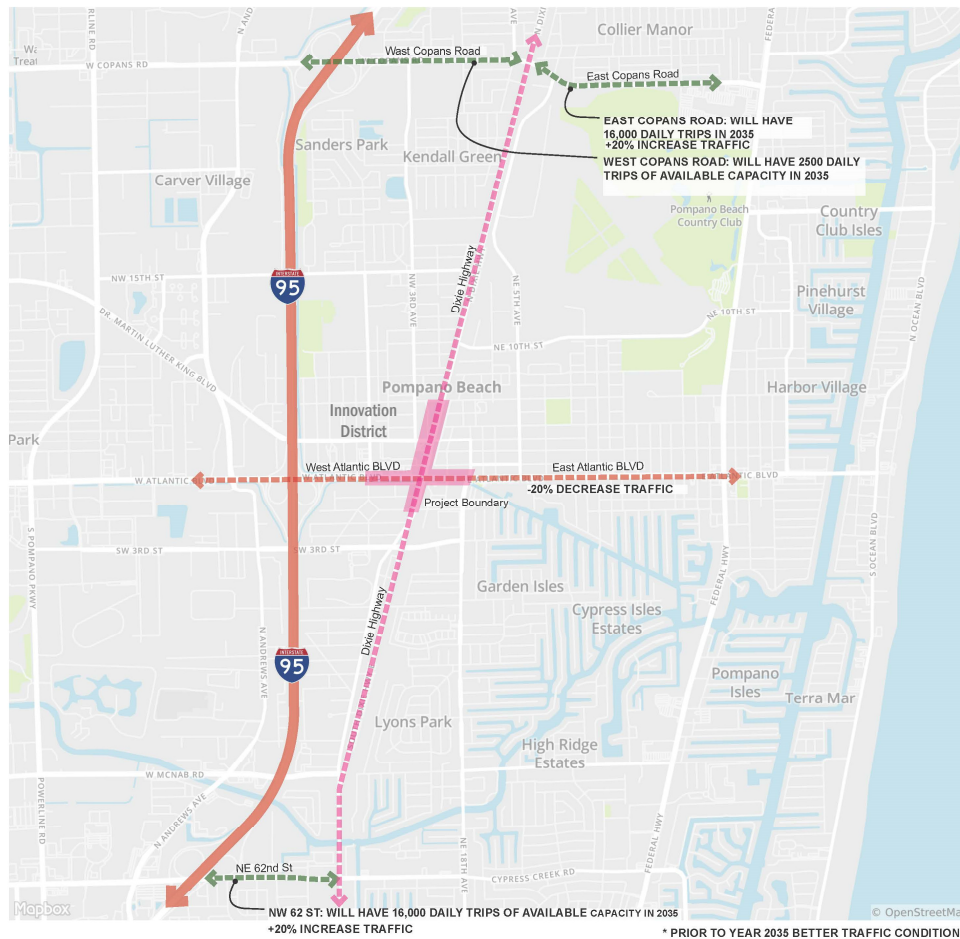
- Redevelopment**
- Jobs
 - Increased tax base
 - Improved services

Connect downtown to the beach and the beach to downtown (ETOC)

Infrastructure improvement that catalyzes redevelopment

Adding walkability and sense of place

REGIONAL TRAFFIC RELOCATION



ATLANTIC BOULEVARD:

- Posted speed limit of 35 mph
- Two travel lanes in each direction
- Current traffic volumes per day:
 - 64,300 - 24,700 vehicles west of Dixie Highway
 - 53,500 vehicles east of Dixie Highway
- The acceptable carrying capacity of Atlantic Boulevard ranges from 59,900 - 32,400 vehicles per day

DIXIE HIGHWAY:

- Posted speed limit of 35 mph north of Atlantic Boulevard
- Posted speed limit of 30 mph south of Atlantic Boulevard
- Two travel lanes in each direction
- Current traffic volumes per day:
 - 26,300 vehicles south of Atlantic Boulevard
 - 30,800 vehicles north of Atlantic Boulevard
- The acceptable carrying capacity of Dixie Highway is 32,400 vehicles per day

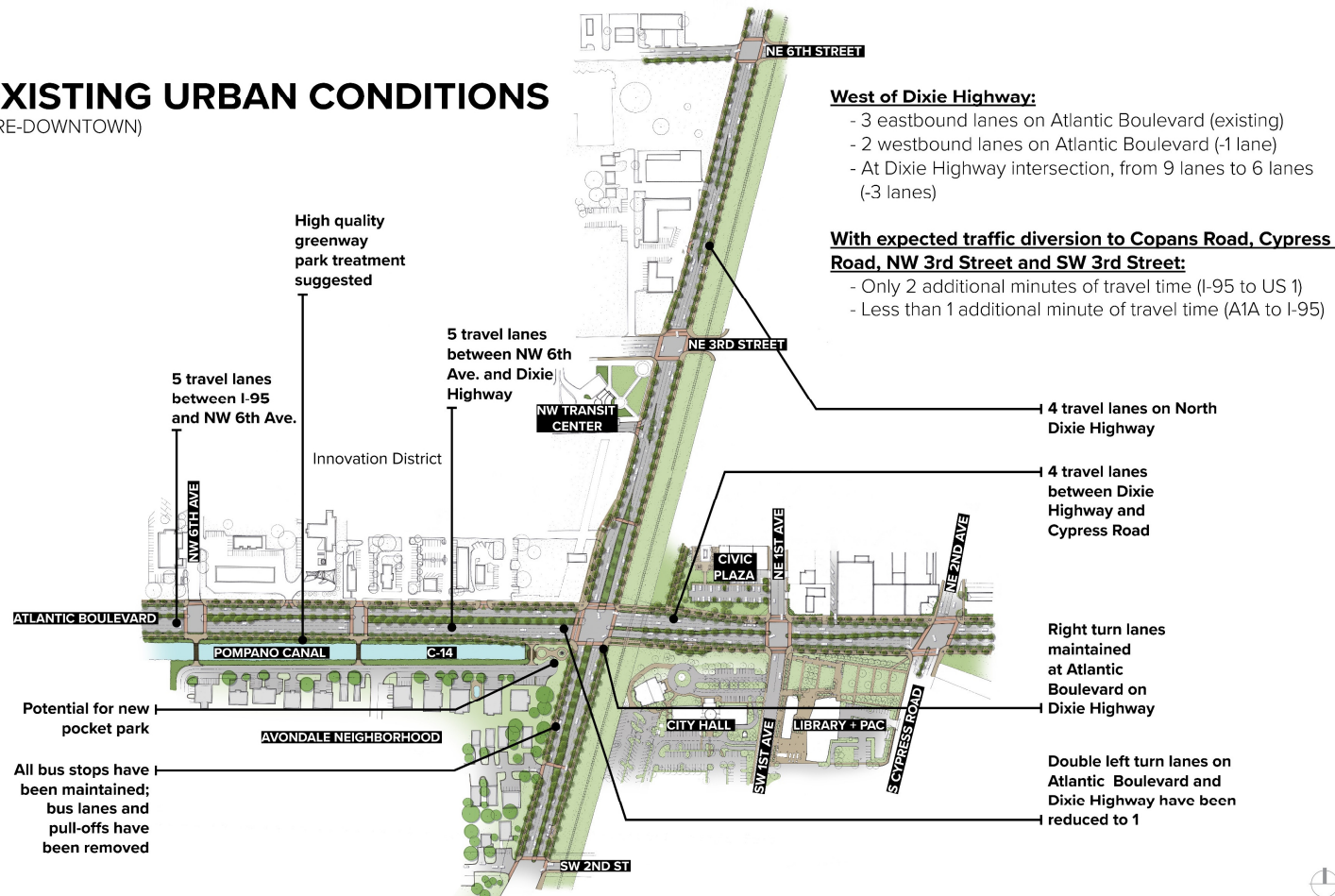
Copans Road has excess capacity for Atlantic Boulevard diverted trips.

Cypress Road has excess capacity for Atlantic Boulevard diverted trips.

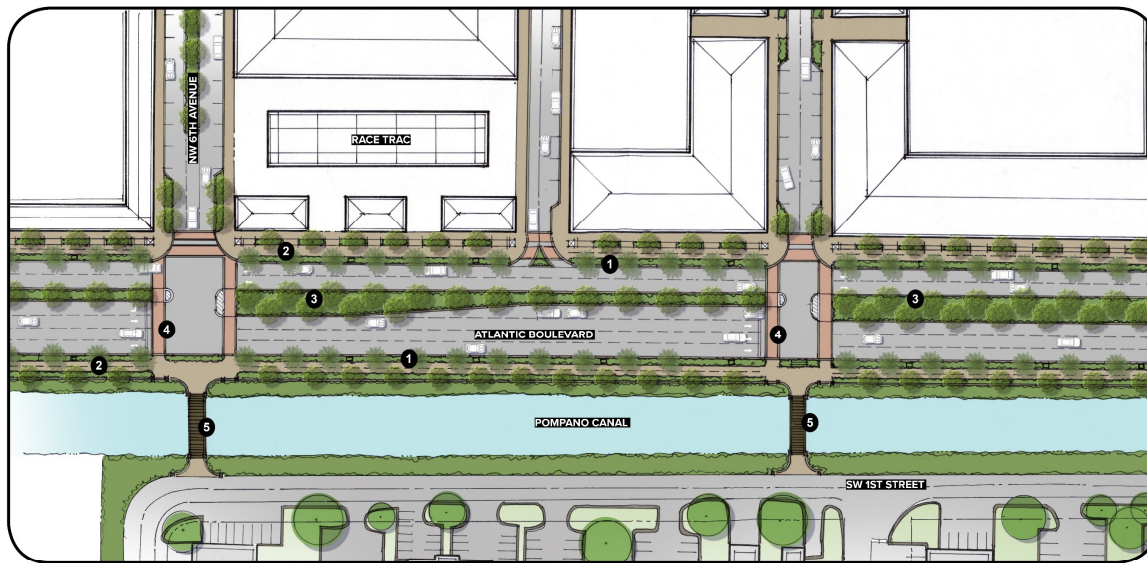
CONCEPTUAL DESIGN

EXISTING URBAN CONDITIONS

(PRE-DOWNTOWN)



CONCEPTUAL DESIGN: ATLANTIC BOULEVARD



SCALE: 1"=100'-0"
0 25 50 100 300



1 Minimum 5 foot curbside tree lawn with street trees



2 10-12 foot multi-use pedestrian and bike cultural trail



3 10-14 foot widened landscape medians

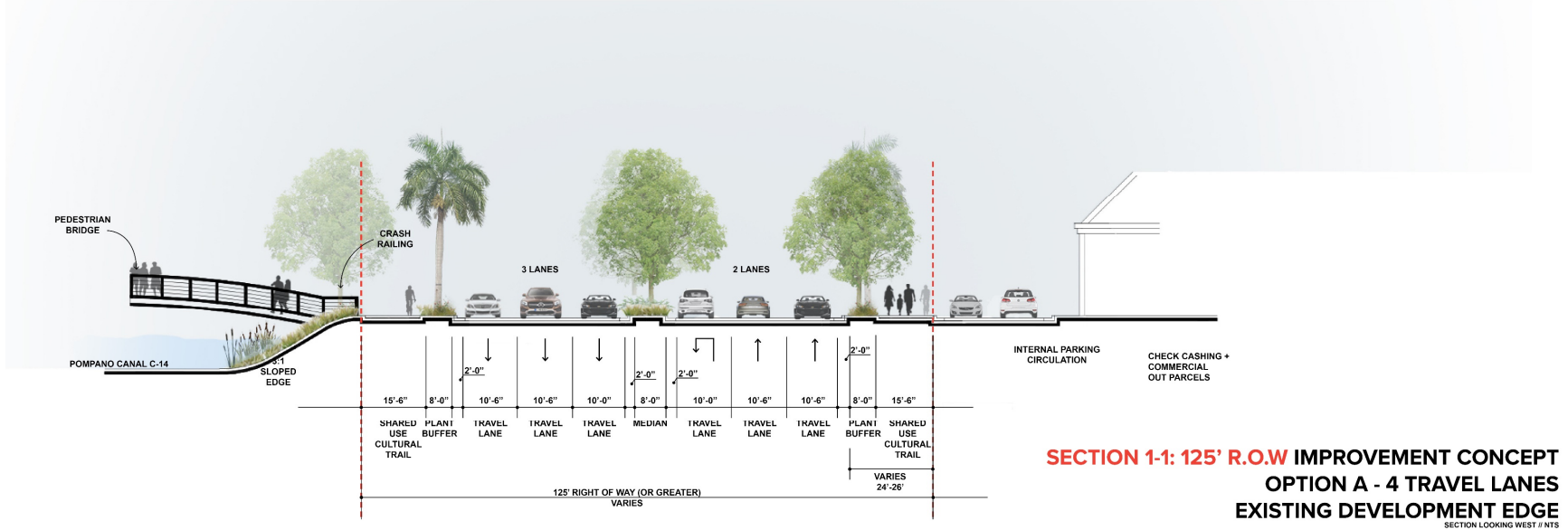
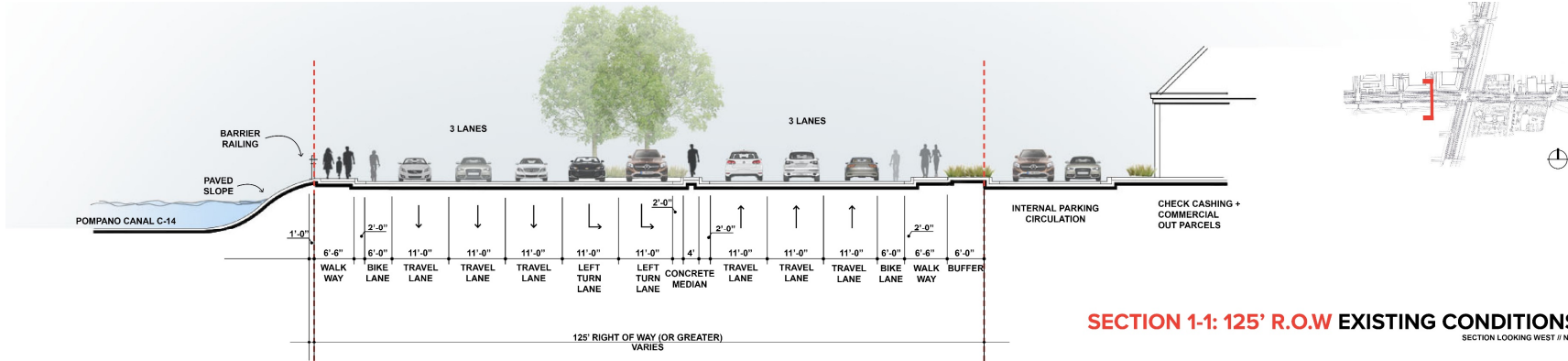


4 Newly defined crosswalks for cyclists and pedestrians

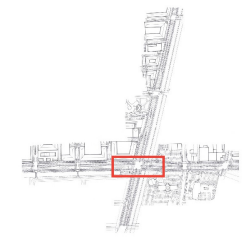
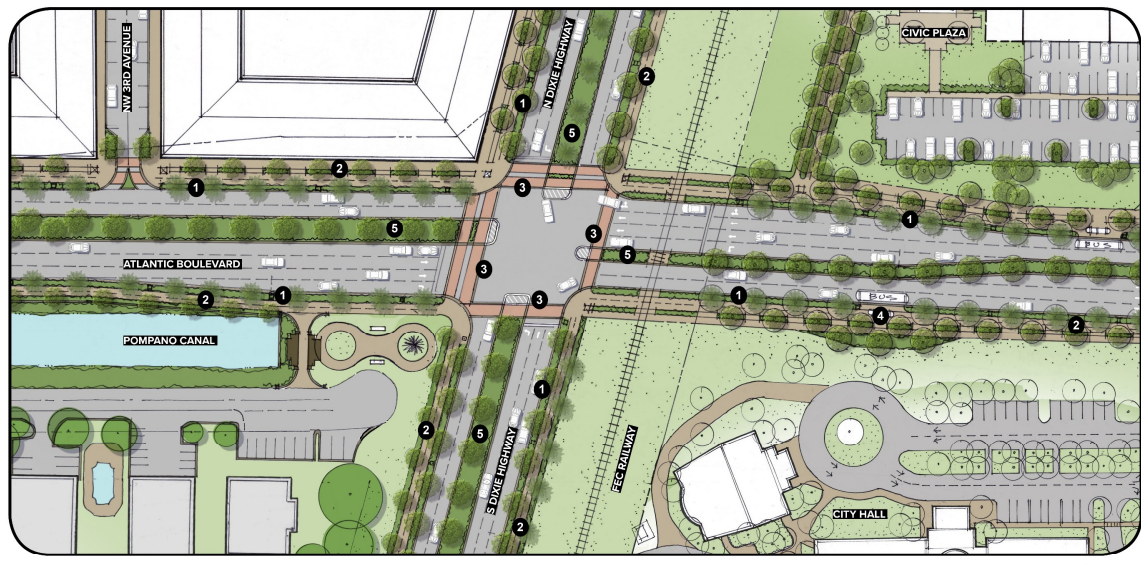


5 2 proposed pedestrian bridges over canal

ROADWAY SECTIONS: ATLANTIC BOULEVARD



CONCEPTUAL DESIGN: NORTH DIXIE HIGHWAY



1 8 foot curbside tree lawn with street trees



2 Minimum 15 foot multi-use pedestrian and bike cultural trail



3 Newly defined crosswalks for cyclists and pedestrians



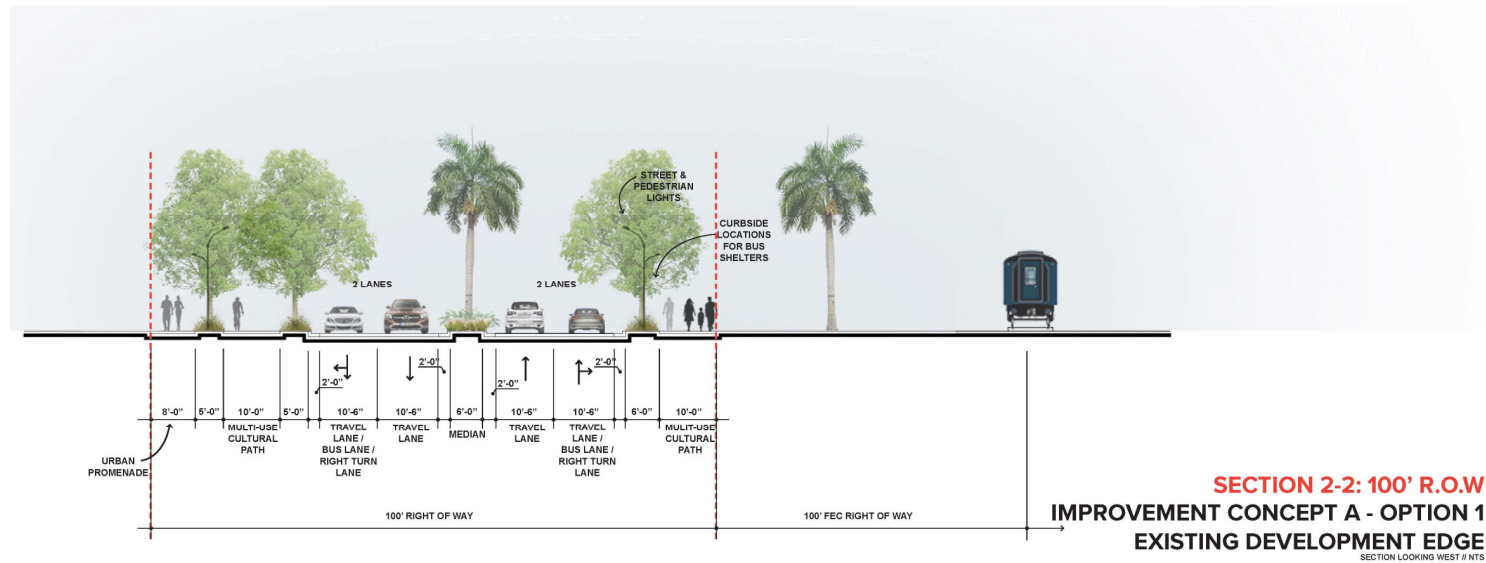
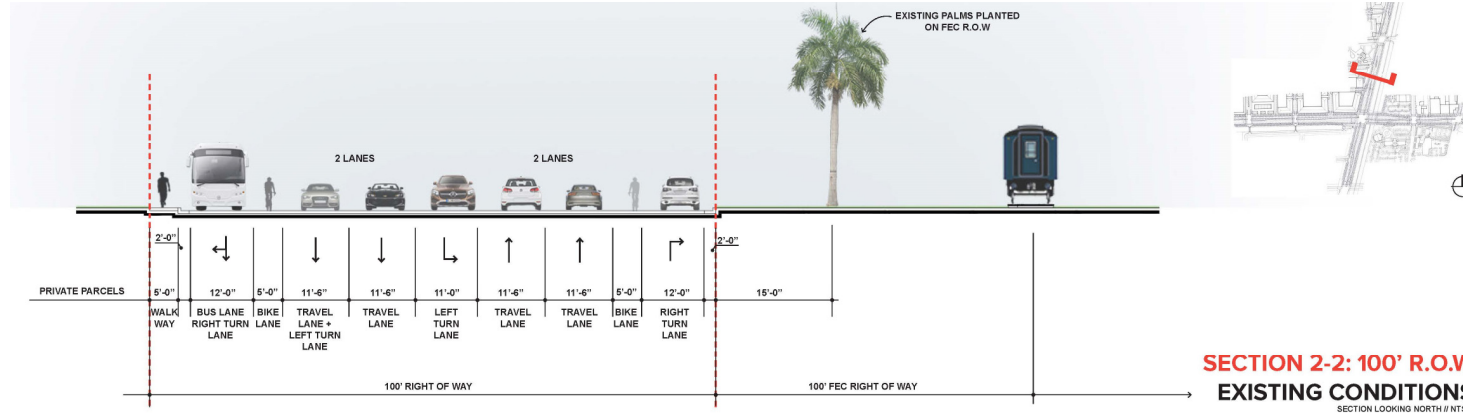
4 Transit shelter locations moved to curb



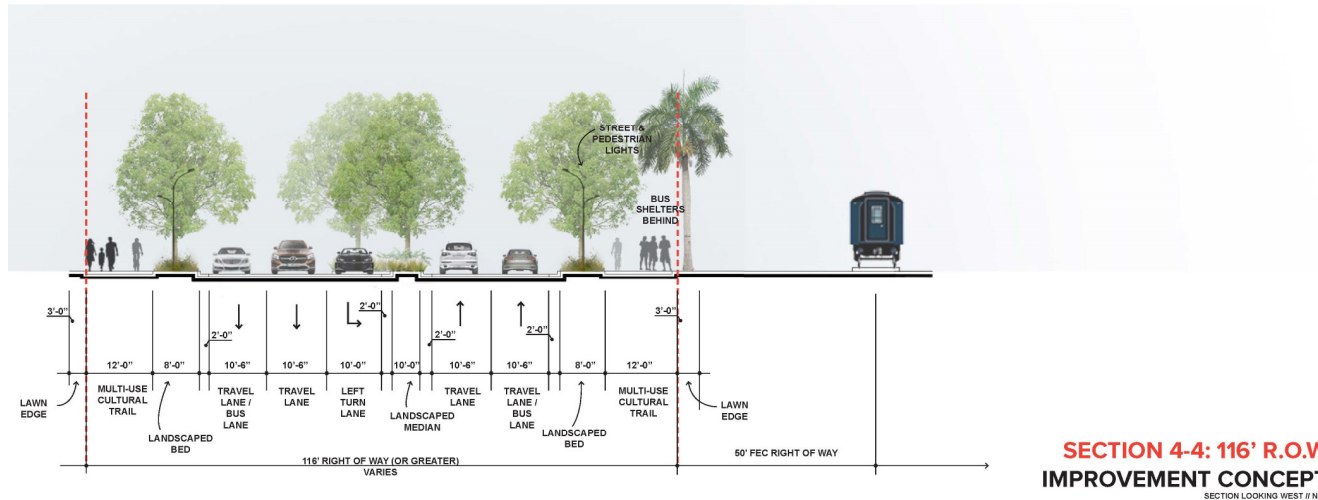
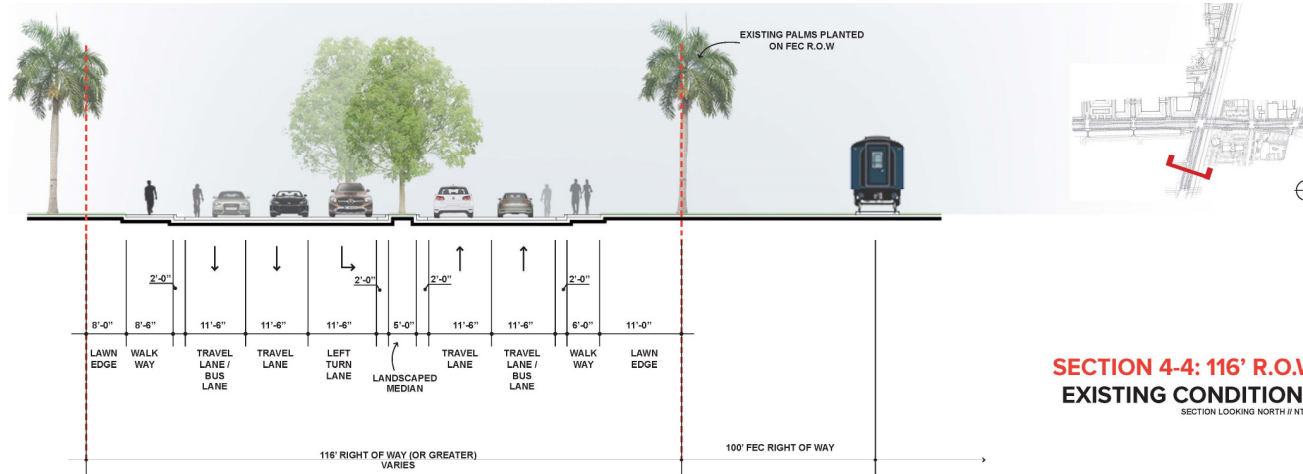
5 8 foot planted medians

SCALE 1"=80'-0"

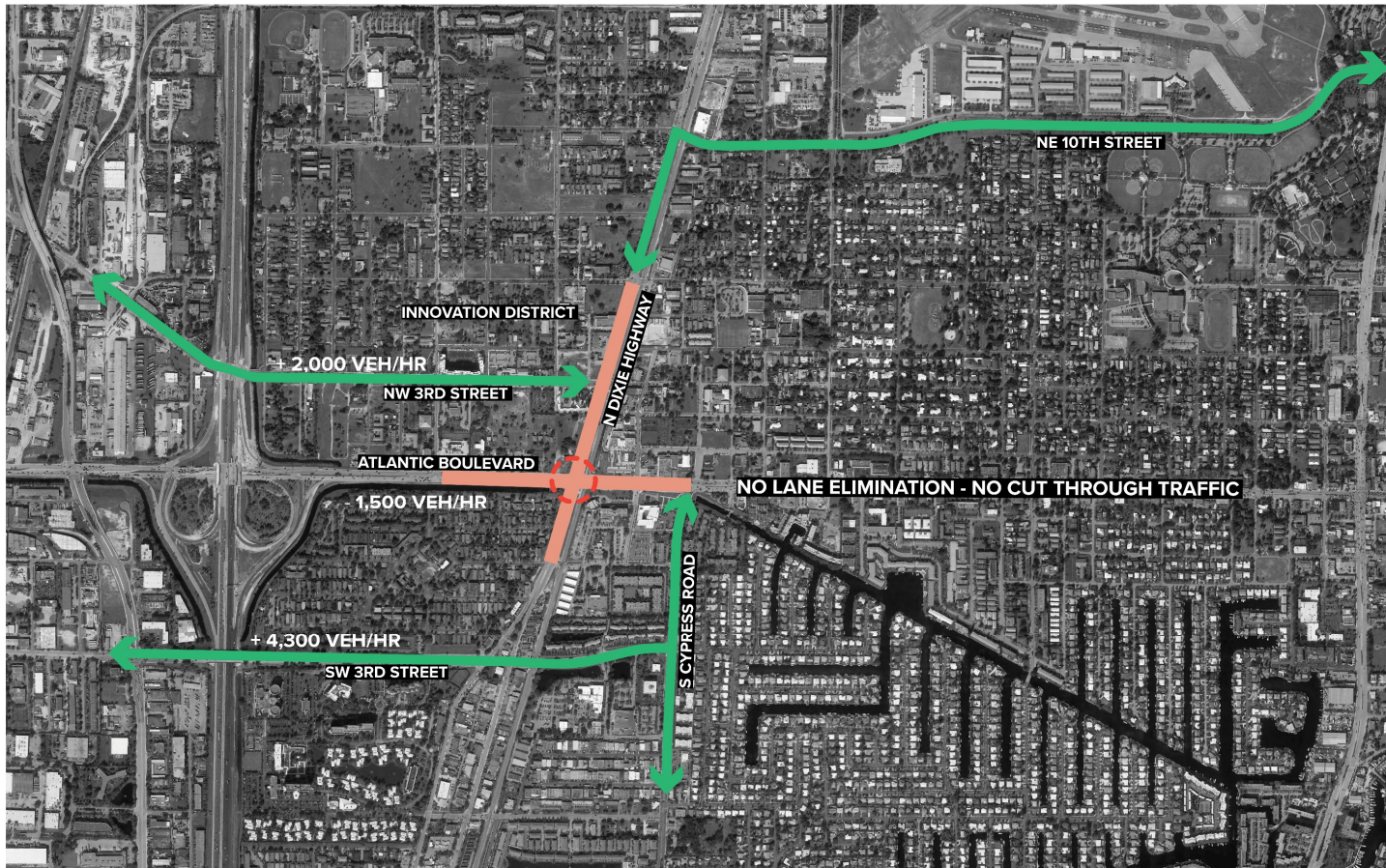
ROADWAY SECTIONS: NORTH DIXIE HIGHWAY






ROADWAY SECTIONS: SOUTH DIXIE HIGHWAY

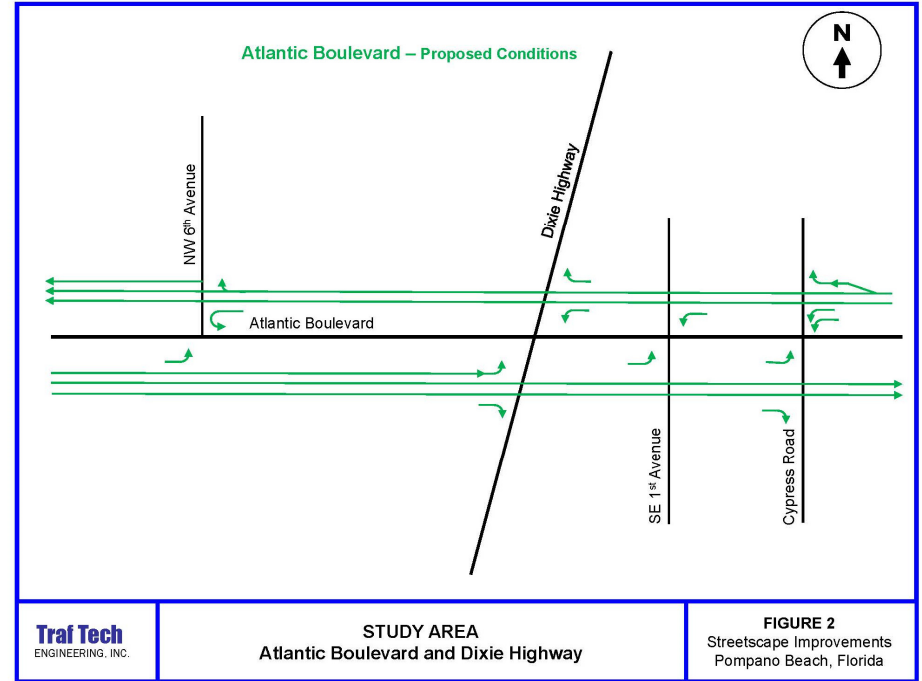
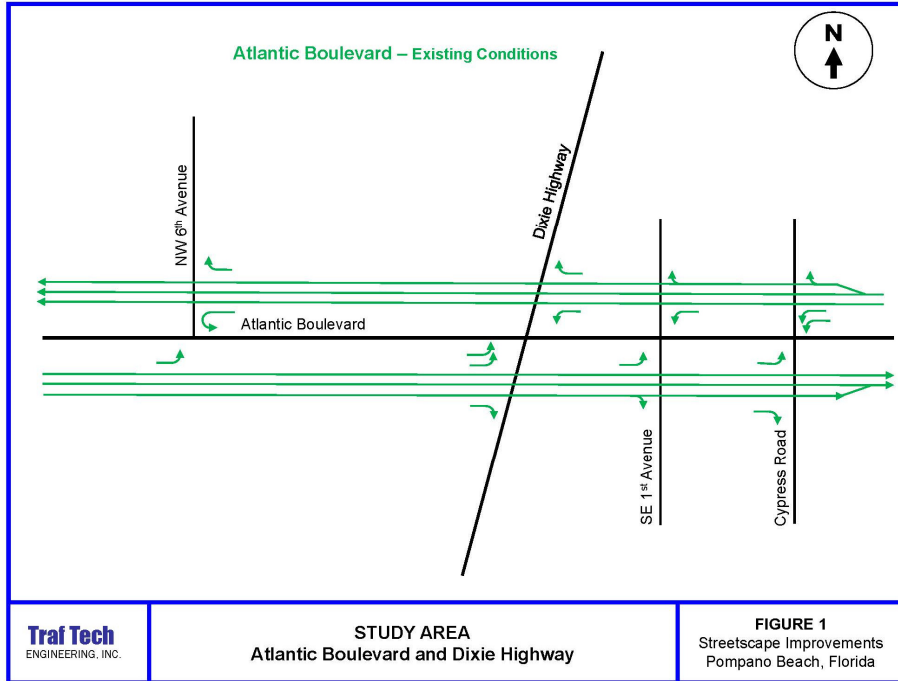


TRAFFIC NETWORK: BYPASS ROUTES

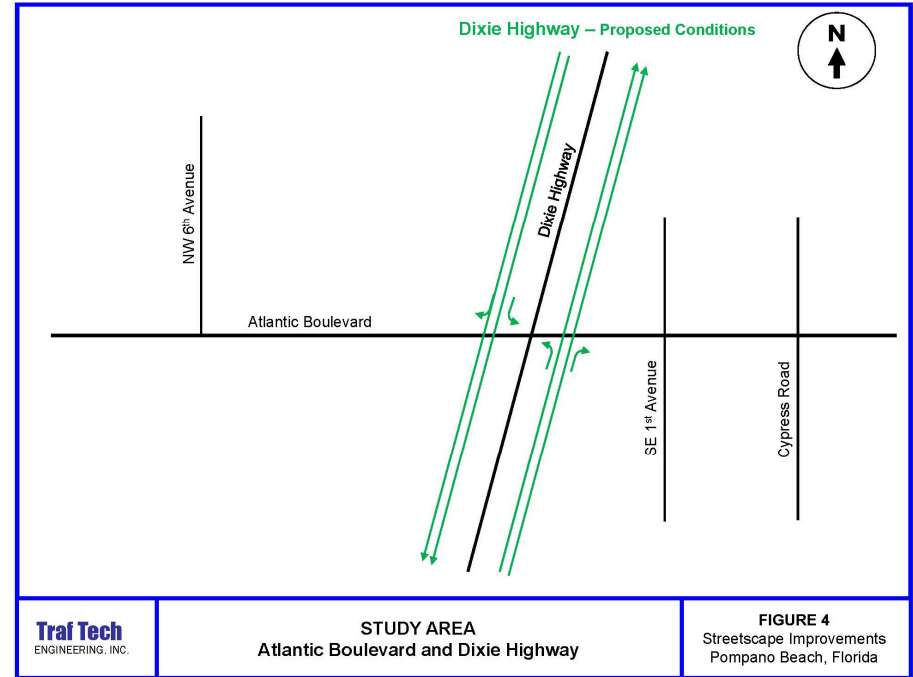
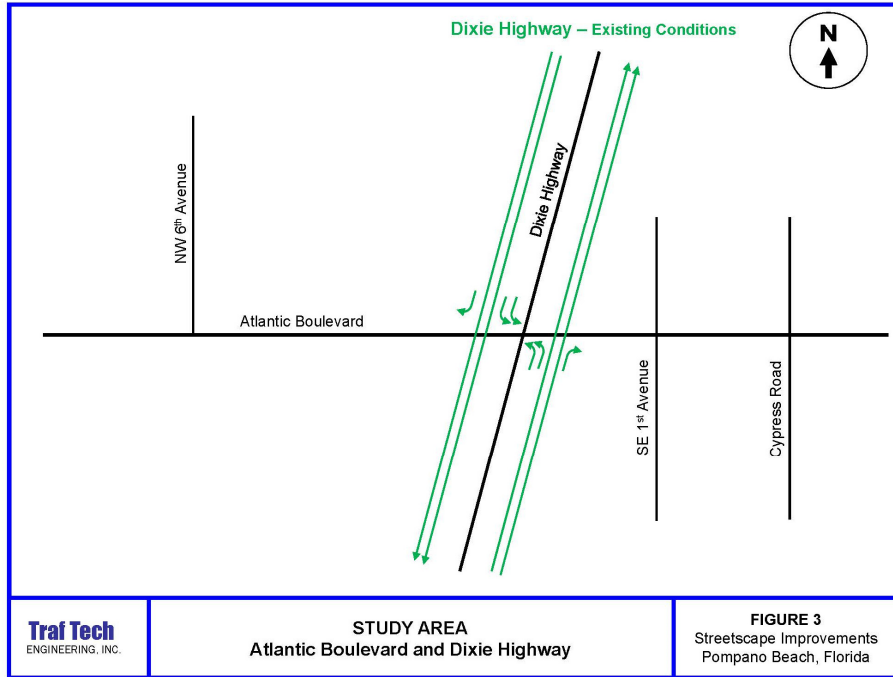


-  SITE
-  BYPASS ROUTE
-  KEY INTERSECTION

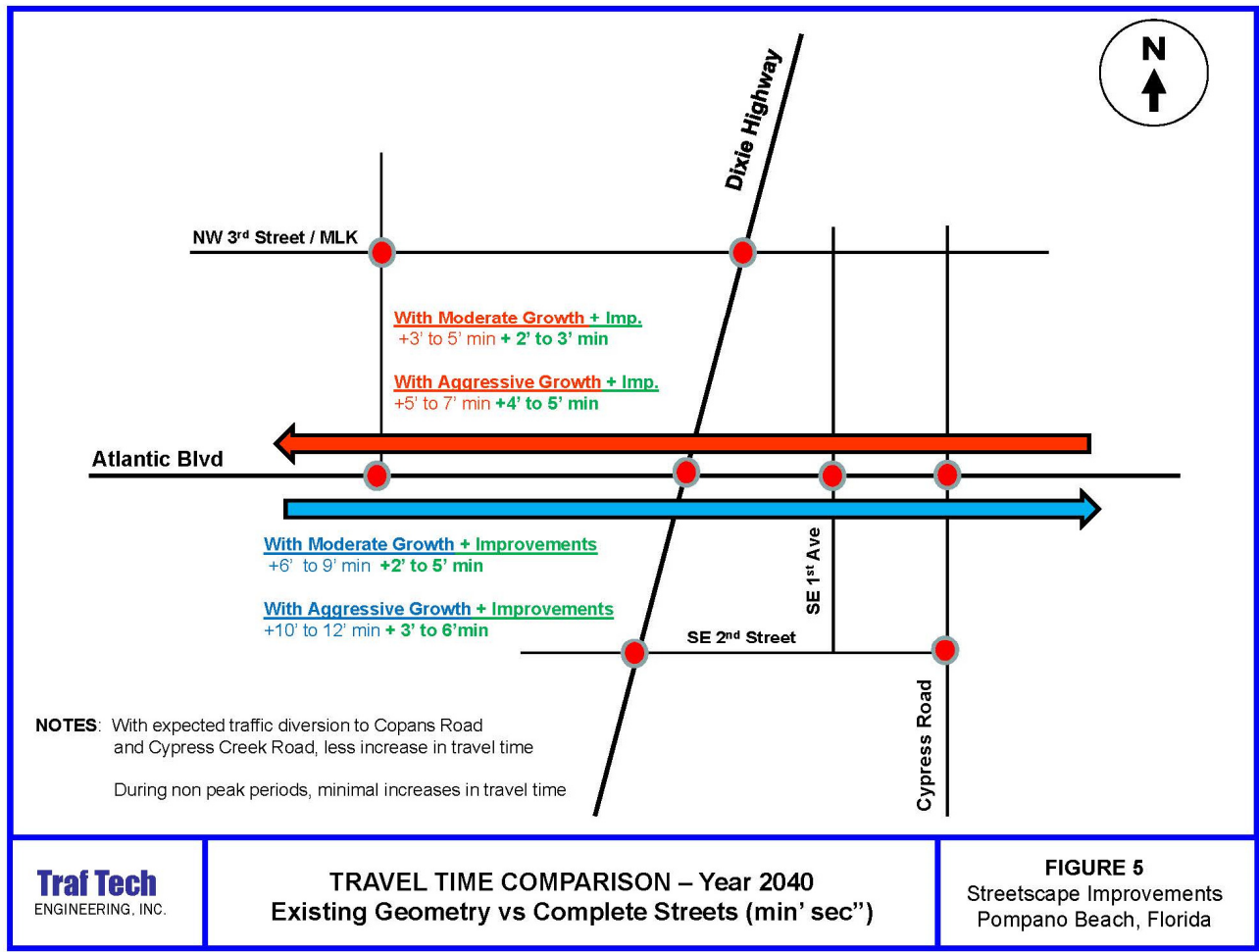
TRAFFIC ANALYSIS: ATLANTIC BLVD



TRAFFIC ANALYSIS: DIXIE HIGHWAY

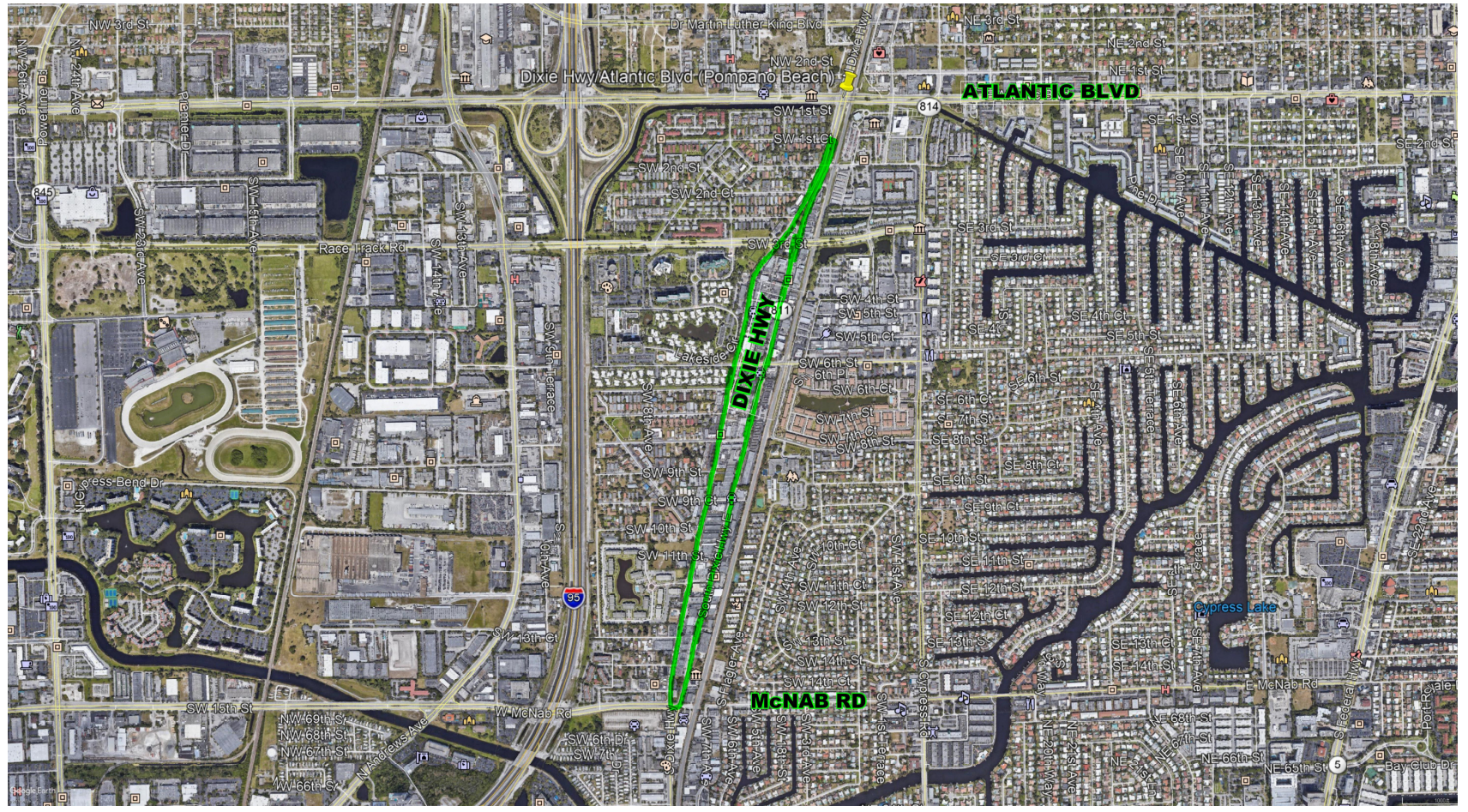


TRAFFIC ANALYSIS: TIME TRAVEL COMPARISON

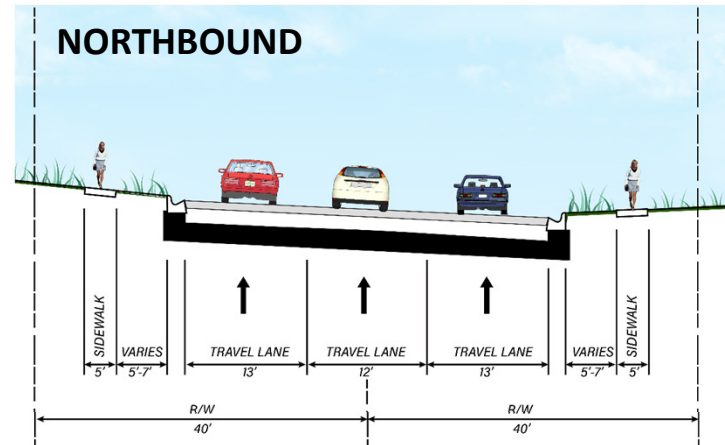
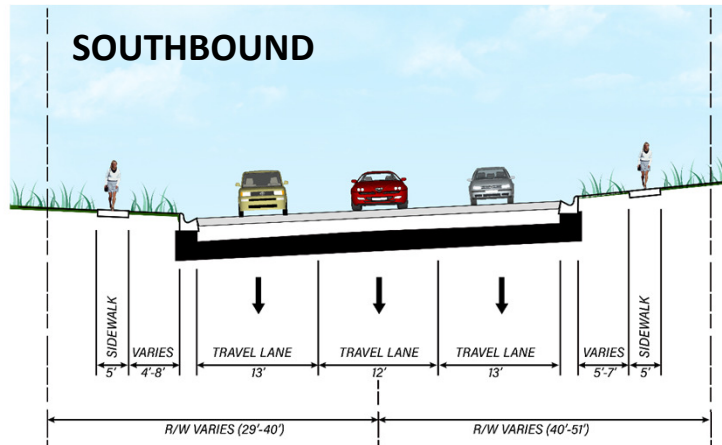


<p>Traf Tech ENGINEERING, INC.</p>	<p>TRAVEL TIME COMPARISON – Year 2040 Existing Geometry vs Complete Streets (min' sec'')</p>	<p>FIGURE 5 Streetscape Improvements Pompano Beach, Florida</p>
---	--	--

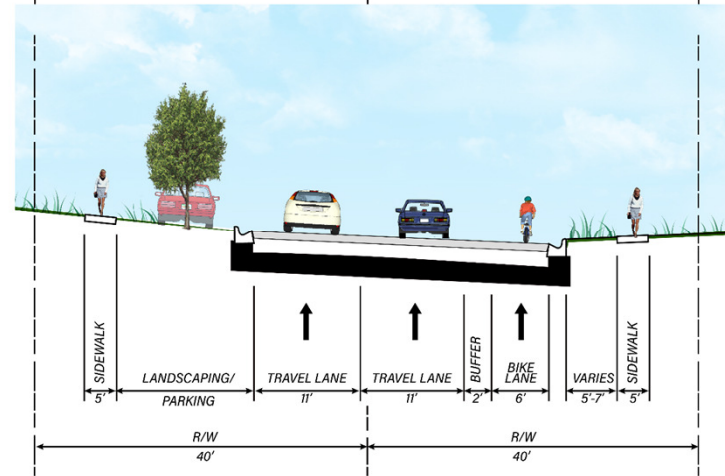
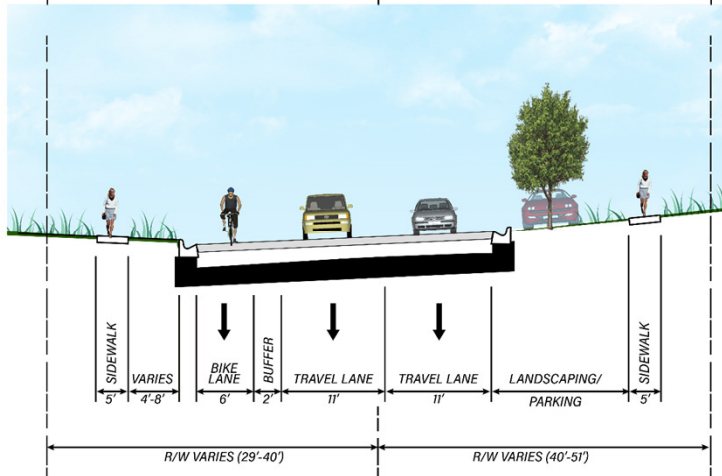
SOUTH DIXIE HIGHWAY



ROADWAY SECTION: DIXIE HIGHWAY MCNAB ROAD TO SW 2ND COURT



EXISTING



PROPOSED

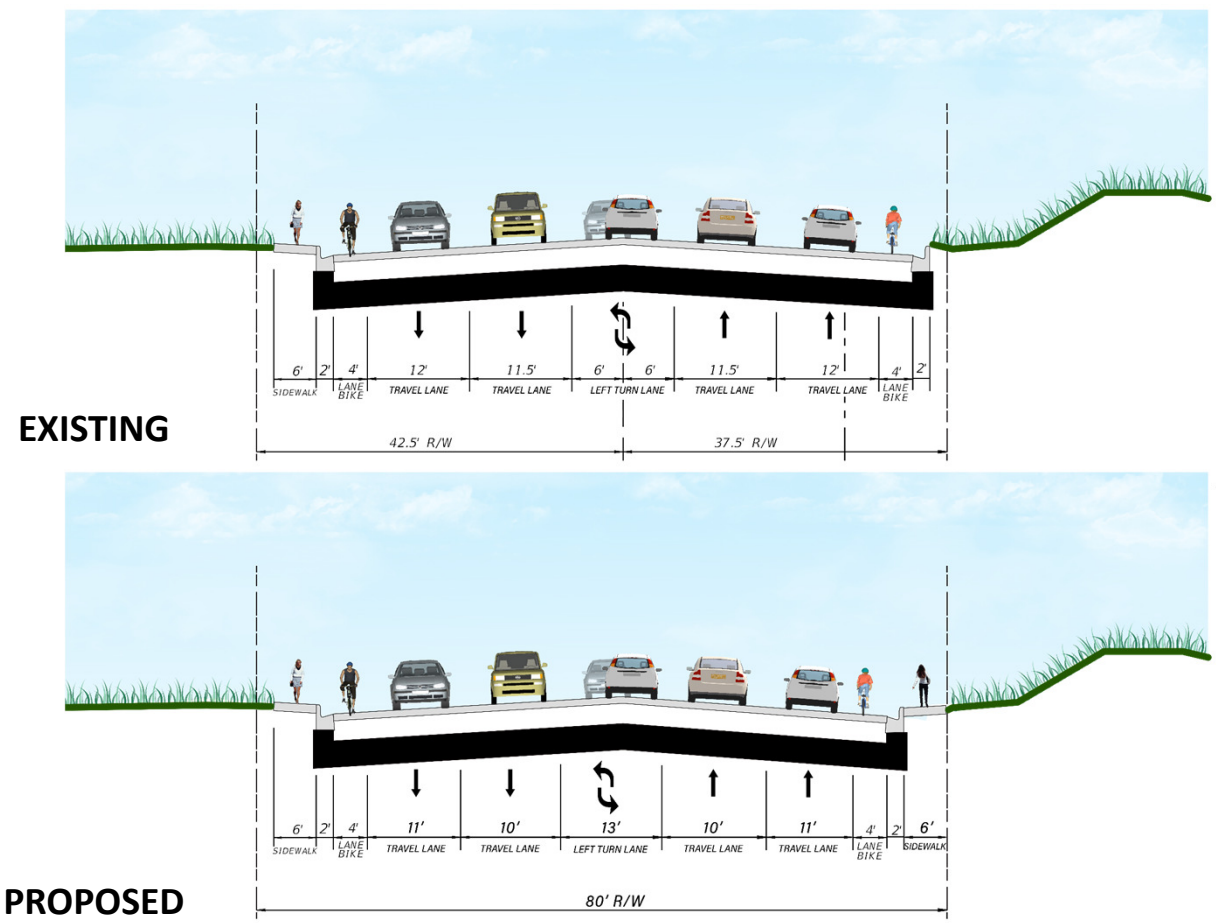
SOUTH DIXIE HIGHWAY



NORTH DIXIE HIGHWAY



ROADWAY SECTION: DIXIE HIGHWAY NE 3RD STREET TO SAMPLE ROAD



POTENTIAL PEDESTRIAN CROSSING



NEXT STEPS

Finalize Conceptual Design: June – September

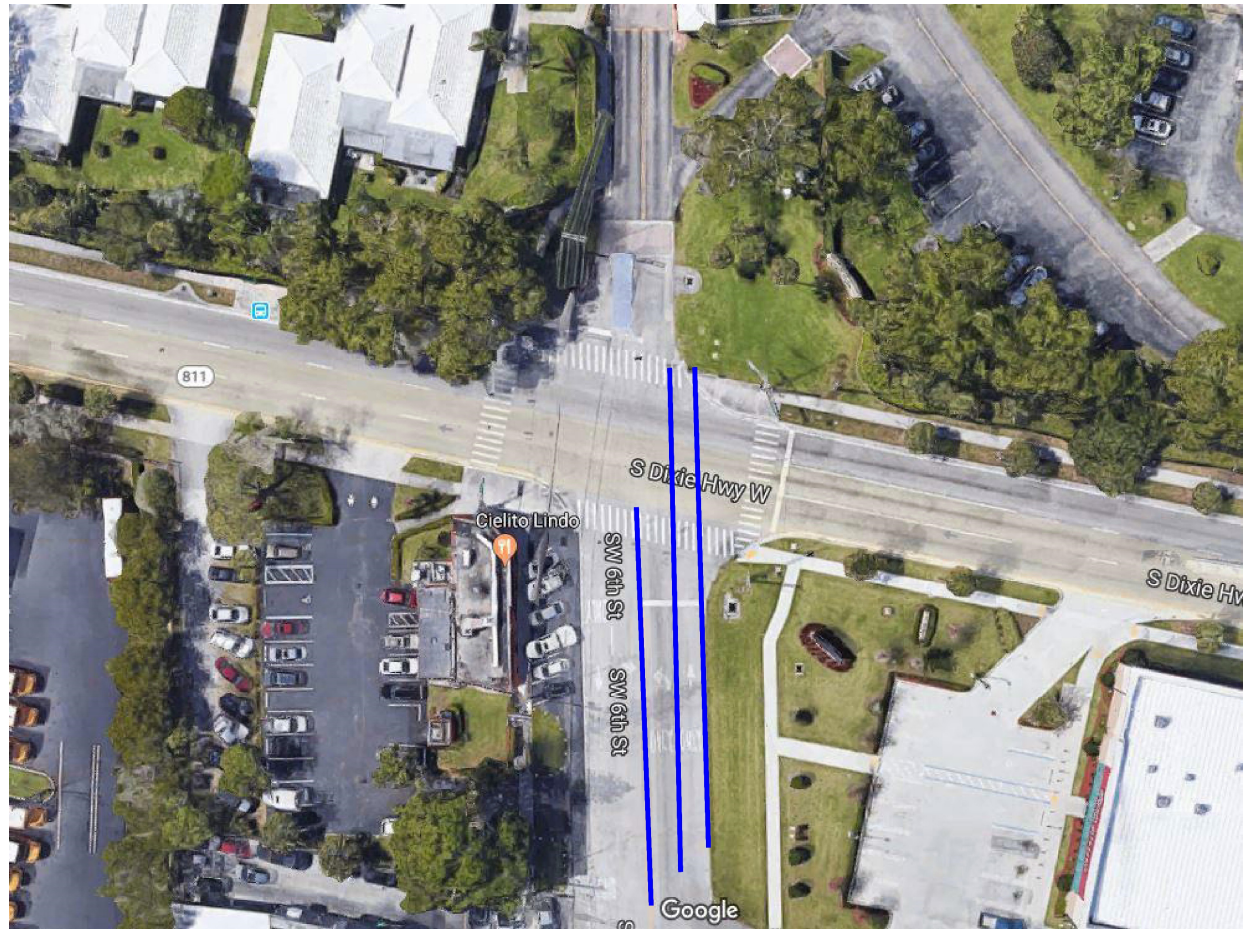
Schematic Design



HIDDEN SLIDES



JOHN KNOX VILLAGE DRIVE



TRAVEL TIME COMPARISON: ATLANTIC/DIXIE

