

POMPANO PARKS GO BONDS

YOUTH SPORTS COMPLEX

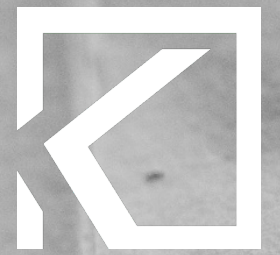
CENTENNIAL PARK

PUBLIC MEETING #2

July 18, 2019



Tradition, Integrity, Excellence



CENTENNIAL PARK
+/- 5 ACRES

YOUTH SPORTS COMPLEX
+/- 12 ACRES

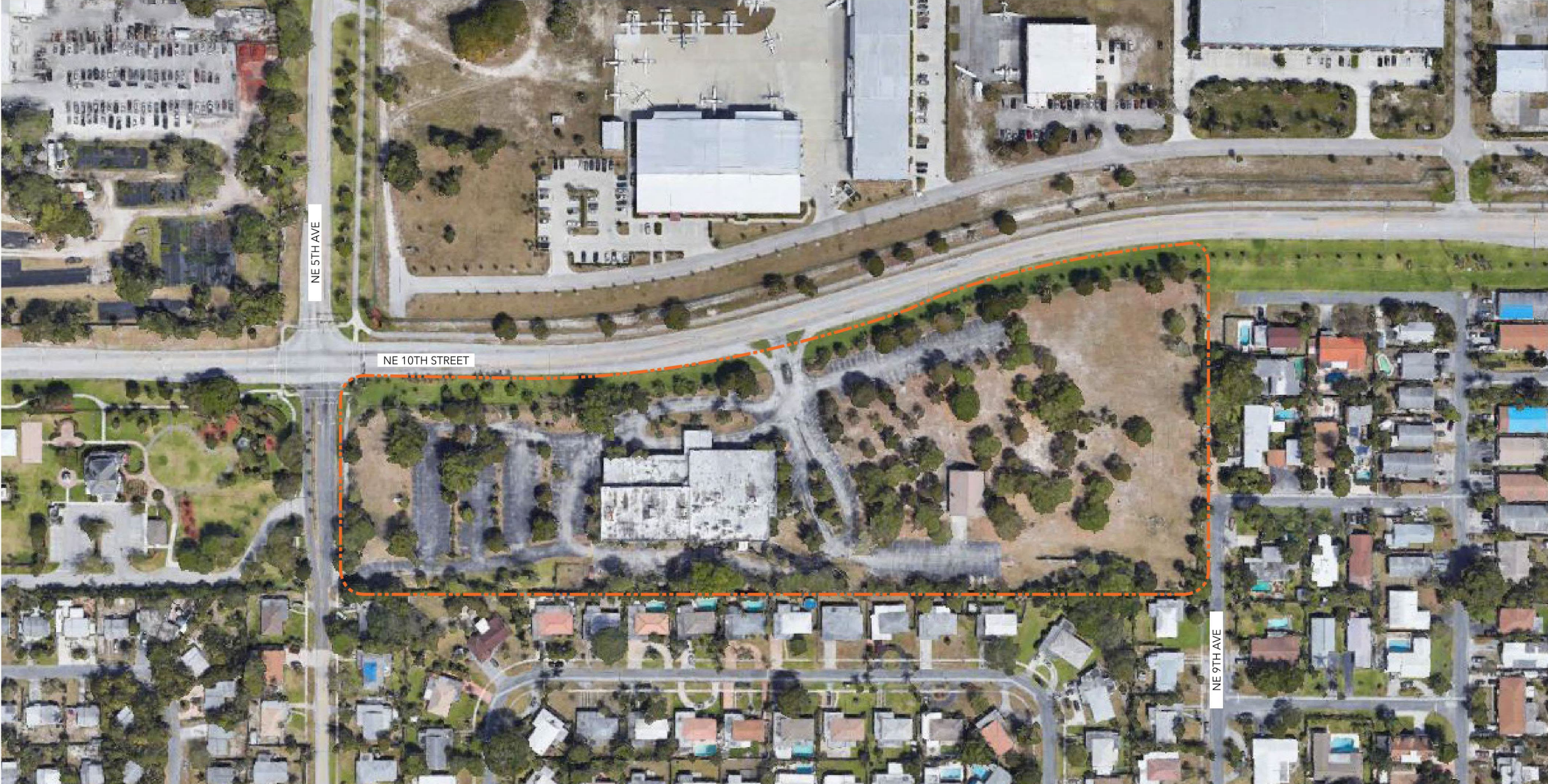


YOUTH SPORTS COMPLEX



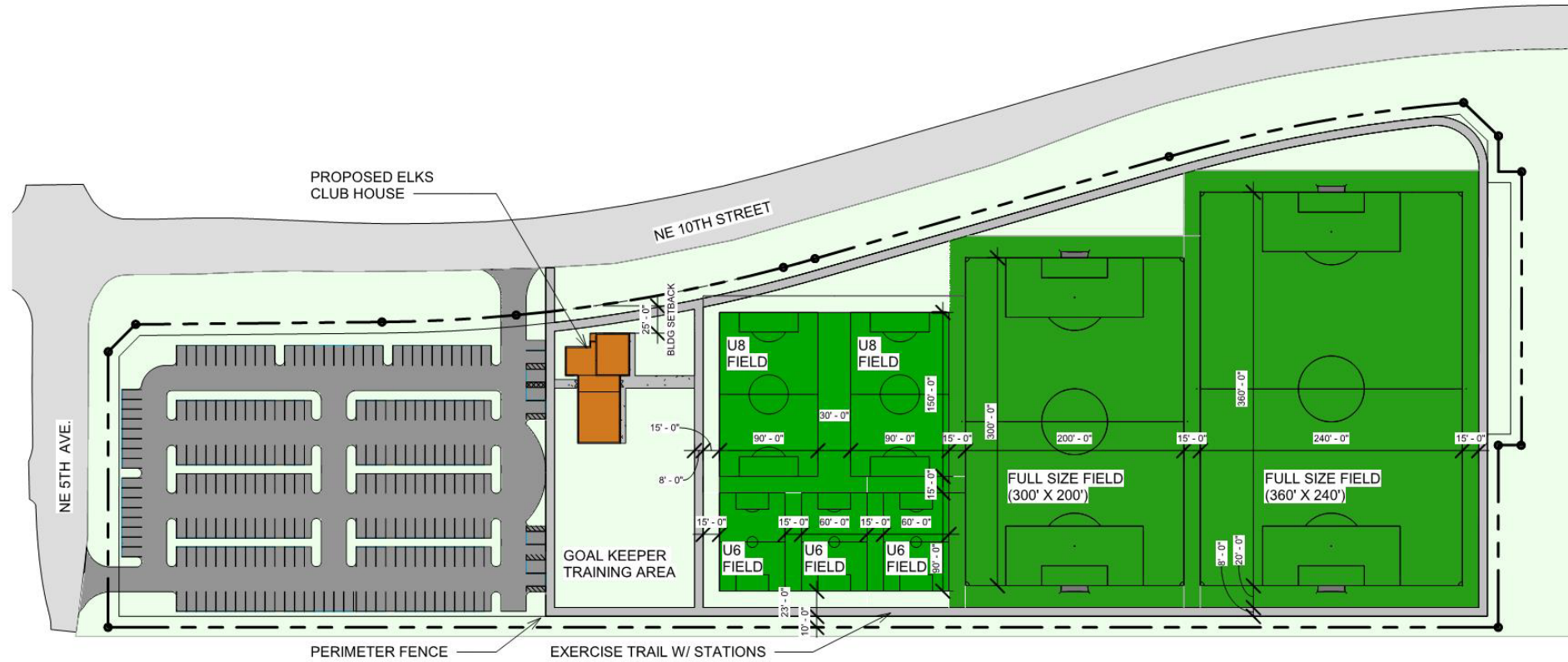
YOUTH SPORTS COMPLEX

EXISTING AERIAL



YOUTH SPORTS COMPLEX

PREVIOUS CONCEPTUAL DESIGNS



YOUTH SPORTS COMPLEX

PREVIOUS CONCEPTUAL DESIGNS



AREA CALCS	
Room Name	Area
WOMENS RESTROOM	381 SF
MENS RESTROOM	361 SF
ELECTRICAL	88 SF
MECHANICAL	105 SF
JANITOR CLOSET	54 SF
STORAGE	67 SF
STORAGE	524 SF
LOBBY	744 SF
RECEPTION DESK	120 SF
FILE ROOM	141 SF
MANAGER OFFICE	124 SF
BREAK ROOM	137 SF
MULTIPURPOSE ROOMS	541 SF
MULTIPURPOSE ROOM	541 SF
TOTAL	3927 SF
WALLS	624 SF
GROSS BUILDING	4546 SF

RESULTS FROM MEETING #1

ACTIVITIES



EXERCISE

PLAY

SHADE



STRUCTURE

CANOPY TREES



POMPANO BEACH YOUTH SPORTS COMPLEX



FURNISHINGS



BENCHES

RECEPTACLES

WALKWAY SURFACES



ASPHALT

CRUSHED STONE

CONCRETE

PAVERS



POMPANO BEACH YOUTH SPORTS COMPLEX



RESULTS FROM MEETING #1

LIGHTING

PARKING LOT

PEDESTRIAN

BOLLARDS

FIELD LIGHTS

POMPANO BEACH YOUTH SPORTS COMPLEX

PLANTING STYLE

NATURAL

FORMAL

DRAINAGE SWALES

NATURAL/BIO-SWALE

STANDARD

POMPANO BEACH YOUTH SPORTS COMPLEX

RESULTS FROM MEETING #1

SPORTS FIELD



ARTIFICIAL TURF **NATURAL TURF**

AUDIENCE SEATING



BLEACHERS **LAWN CHAIRS**

POMPANO BEACH YOUTH SPORTS COMPLEX



NE 10TH AVENUE **NE 11TH AVENUE** **NE 10TH STREET** **NE 9TH STREET**



pompano beach
Florida's Warmest Welcome



CONCEPT 1



CONCEPT 2

LEGEND

1. ENTRANCE
2. PARKING LOT
3. TURN AROUND/DROP OFF AREA
4. BIOSWALES
5. PEDESTRIAN PATH
6. PAVILION/RESTROOM BUILDING
7. ARTIFICIAL TURF SOCCER FIELDS
8. FLEXIBLE EVENT LAWN
9. NOOKS (SEATING, GRILLING, EXERCISE, PLAY)
10. GOAL KEEPER TRAINING AREA
11. KICK WALL
12. CONNECTOR TO EXISTING 10' MULTI-USE PATH

CONCEPT DATA

- PARKING CALCULATION: 192 SPACES
- SPORTS FIELDS: 5.40 ACRES
- FLEXIBLE OPEN SPACE (SF): 1.2 ACRES
- PEDESTRIAN PATH: .42 MILES



CENTENNIAL PARK

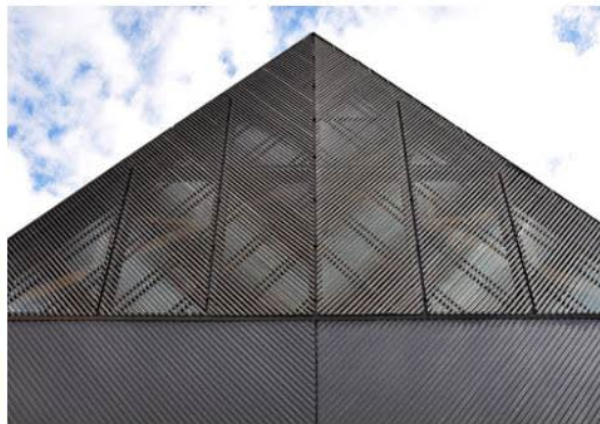




MATERIALS

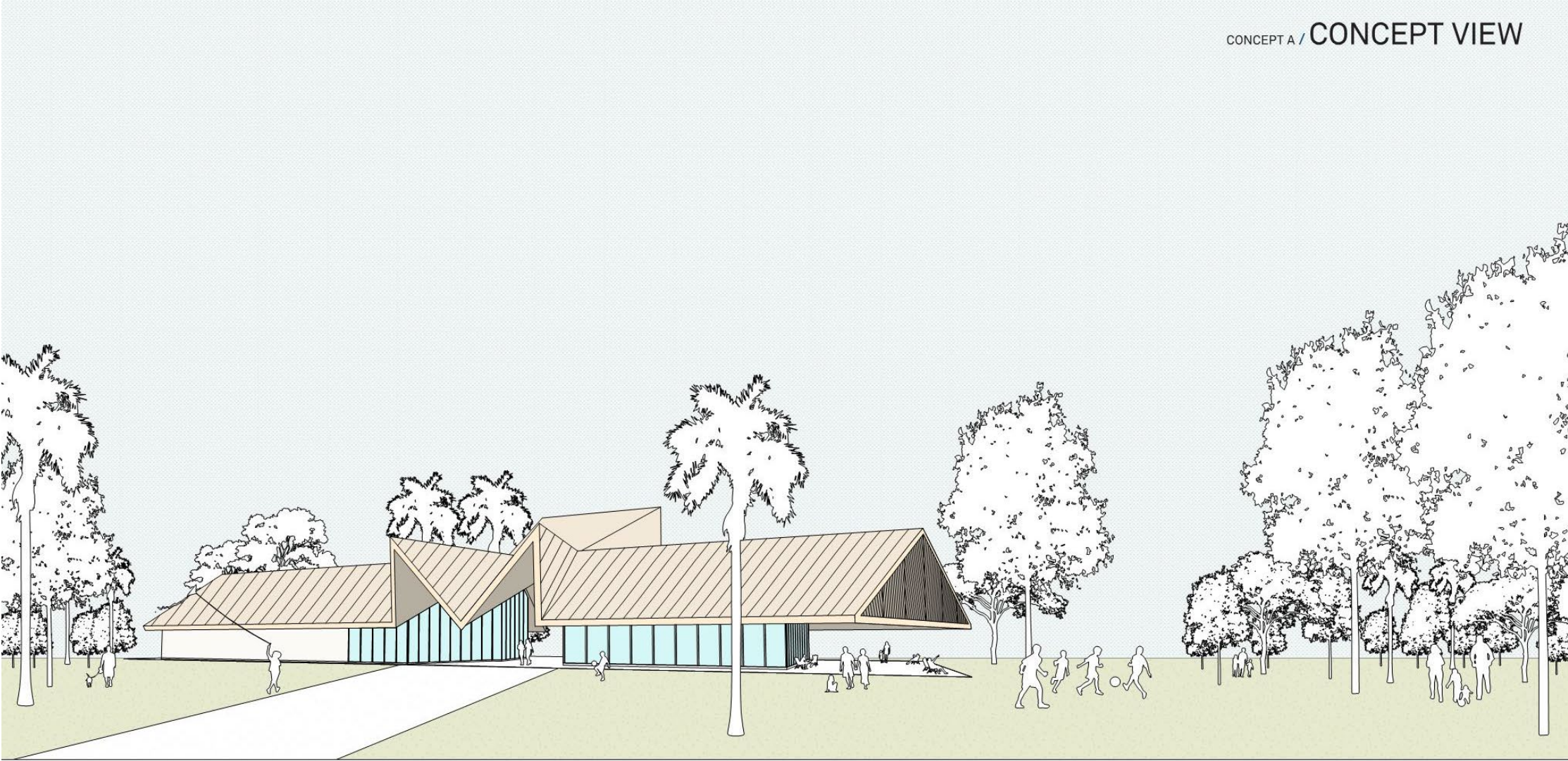


MATERIALS



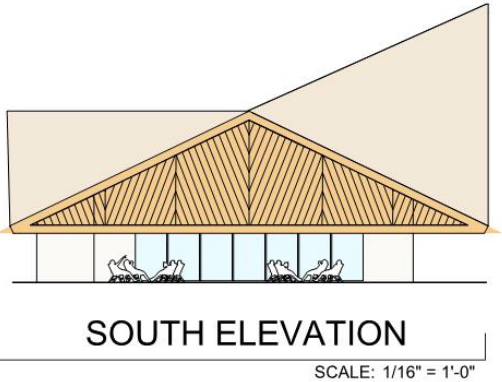
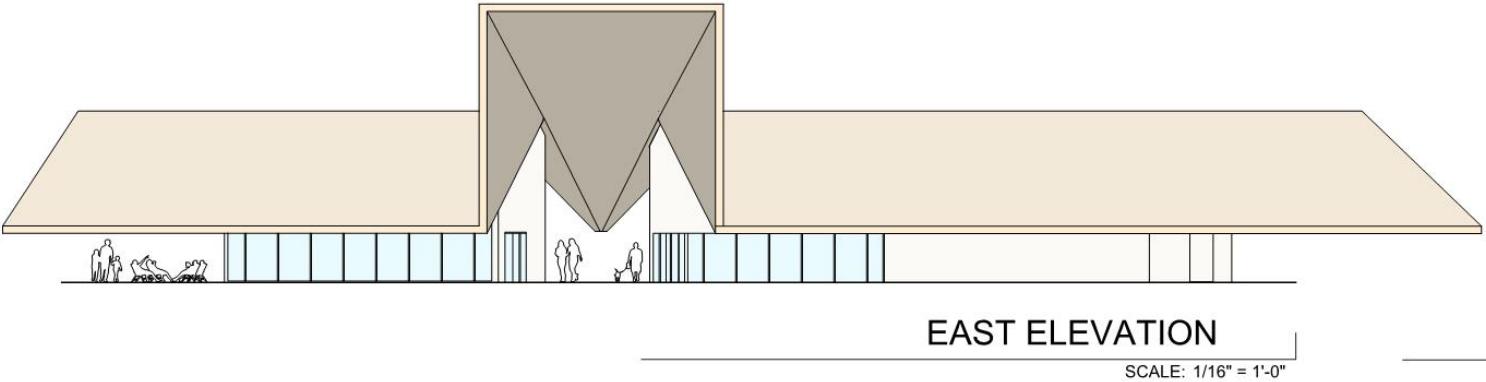
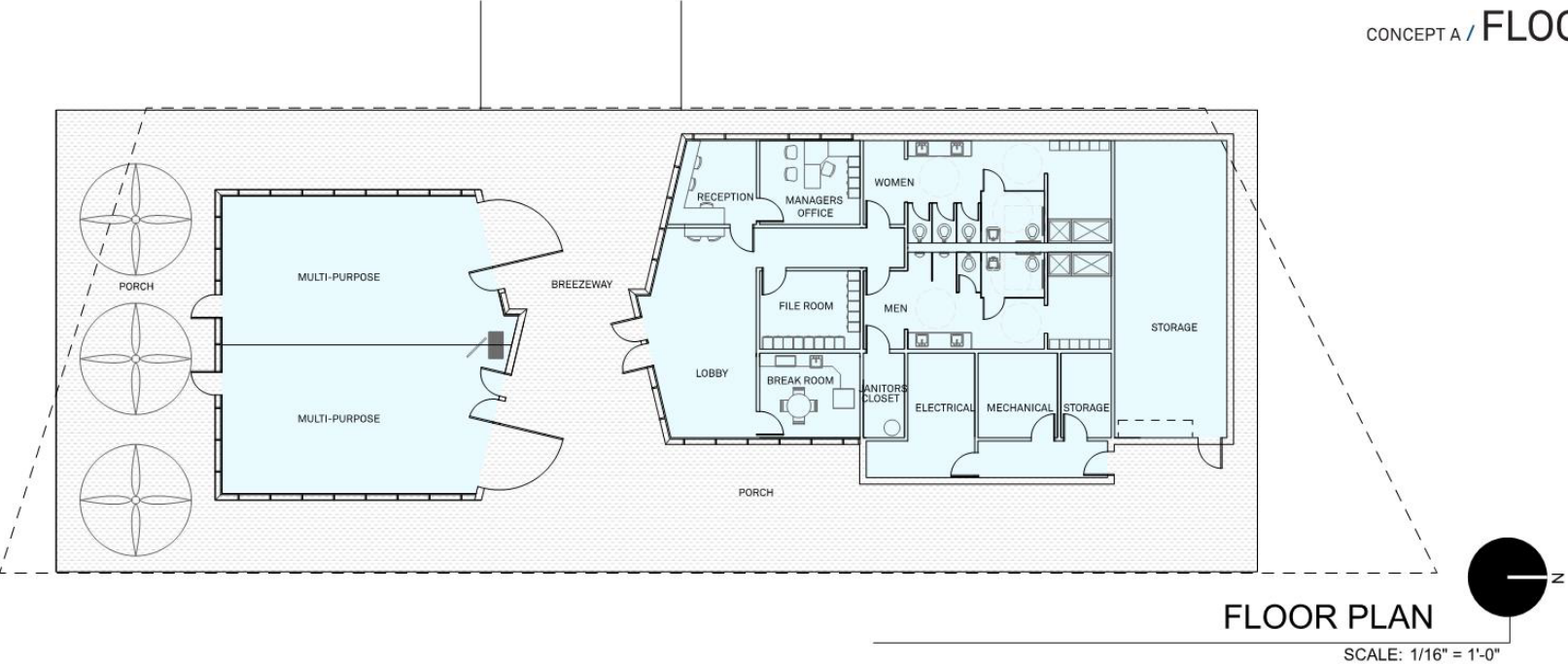
PAVILION/RESTROOM BUILDING – CONCEPT 1

CONCEPT A / CONCEPT VIEW



PAVILION/RESTROOM BUILDING – CONCEPT 1

CONCEPT A / FLOOR PLAN + ELEVATIONS



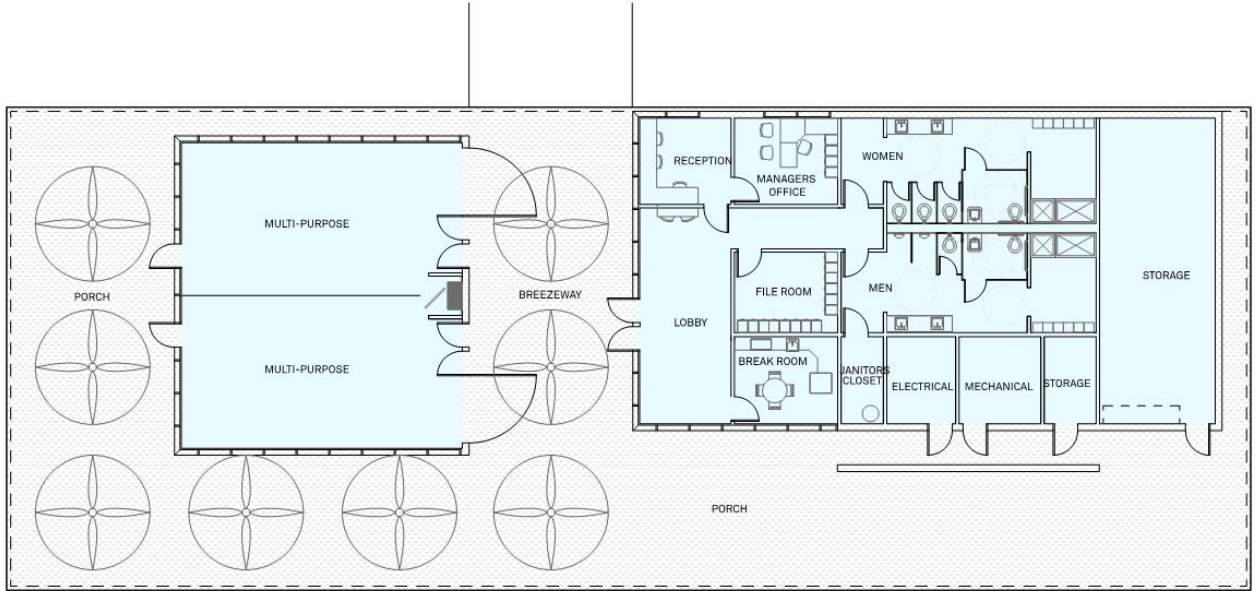
PAVILION/RESTROOM BUILDING – CONCEPT 2

CONCEPT B / CONCEPT VIEW



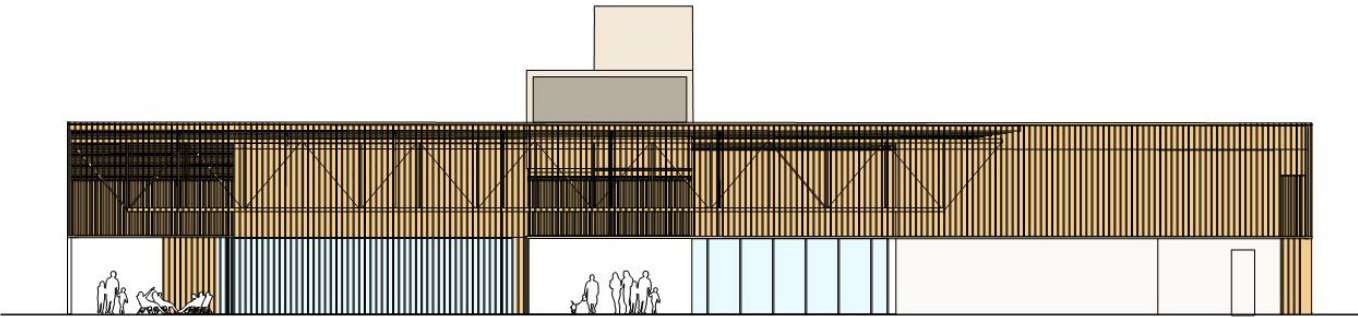
PAVILION/RESTROOM BUILDING – CONCEPT 2

CONCEPT B / FLOOR PLAN + ELEVATIONS



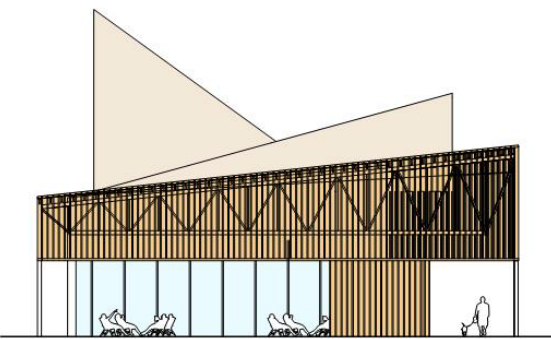
FLOOR PLAN

1/16" = 1'-0"



EAST ELEVATION

SCALE: 1/16" = 1'-0"

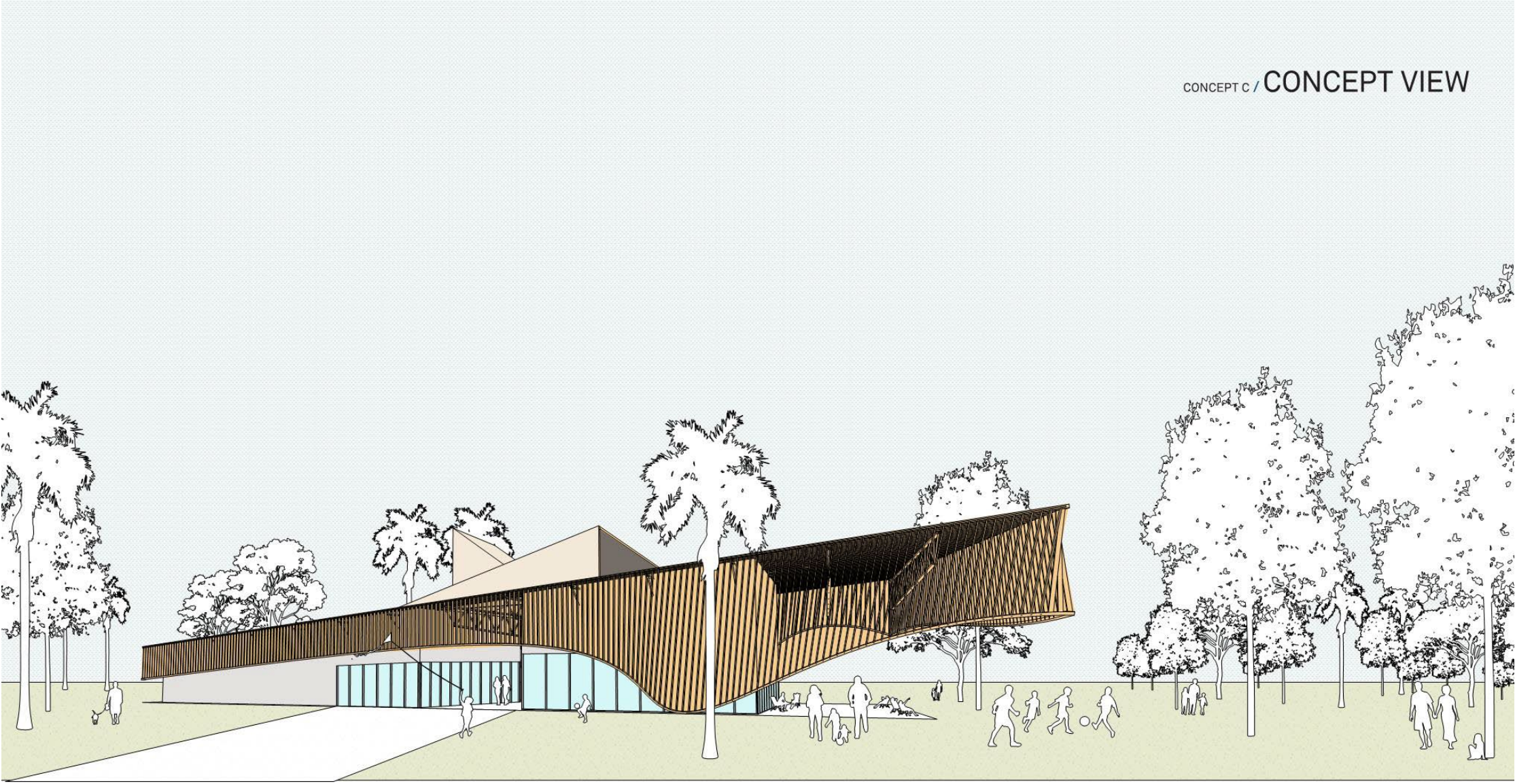


SOUTH ELEVATION

SCALE: 1/16" = 1'-0"

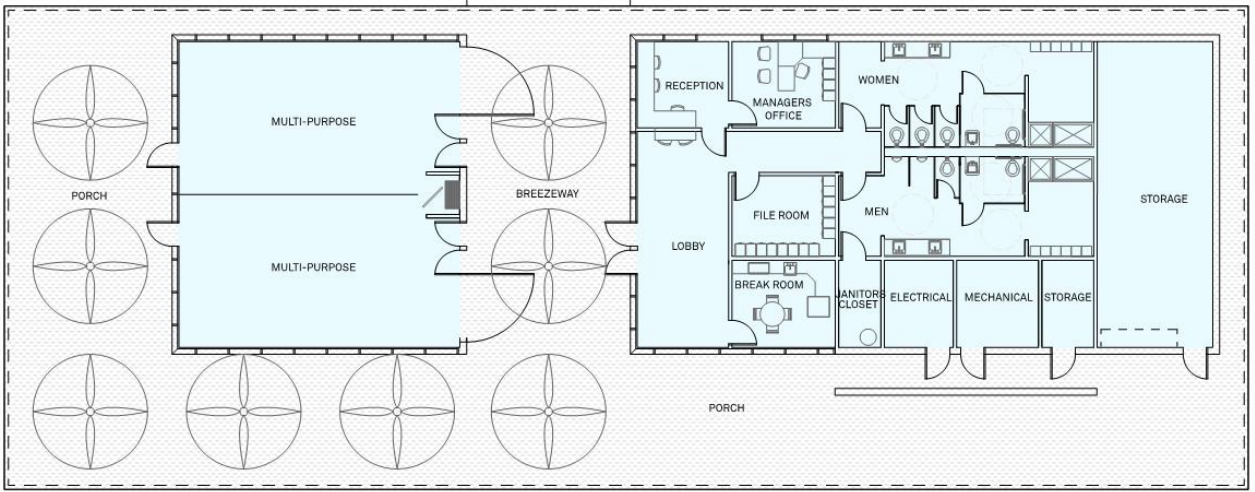
PAVILION/RESTROOM BUILDING – CONCEPT 3

CONCEPT C / CONCEPT VIEW



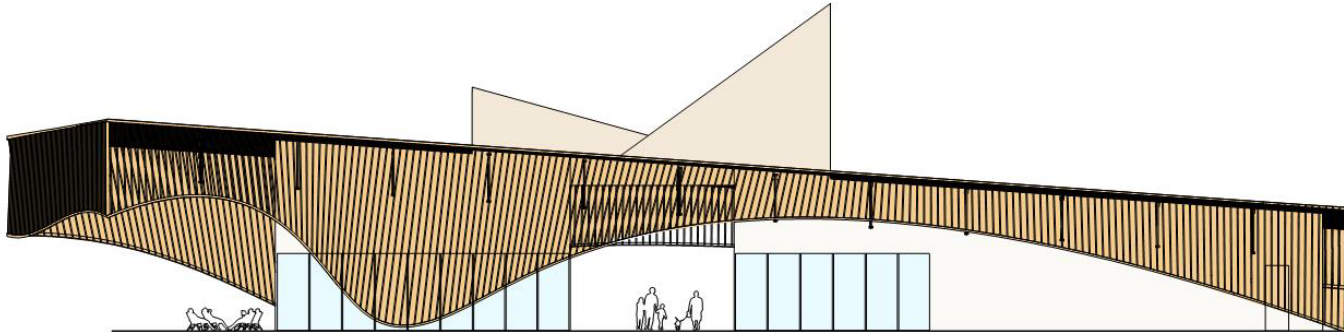
PAVILION/RESTROOM BUILDING – CONCEPT 3

CONCEPT C / FLOOR PLAN + ELEVATIONS



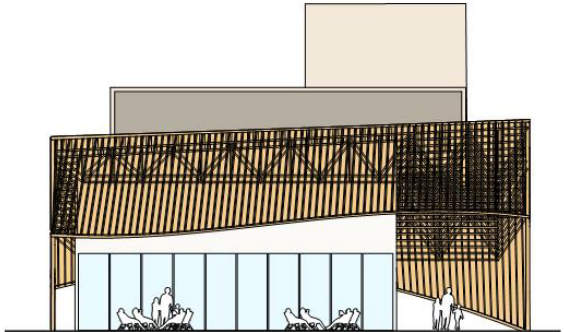
FLOOR PLAN

1/16" = 1'-0"



EAST ELEVATION

SCALE: 1/16" = 1'-0"

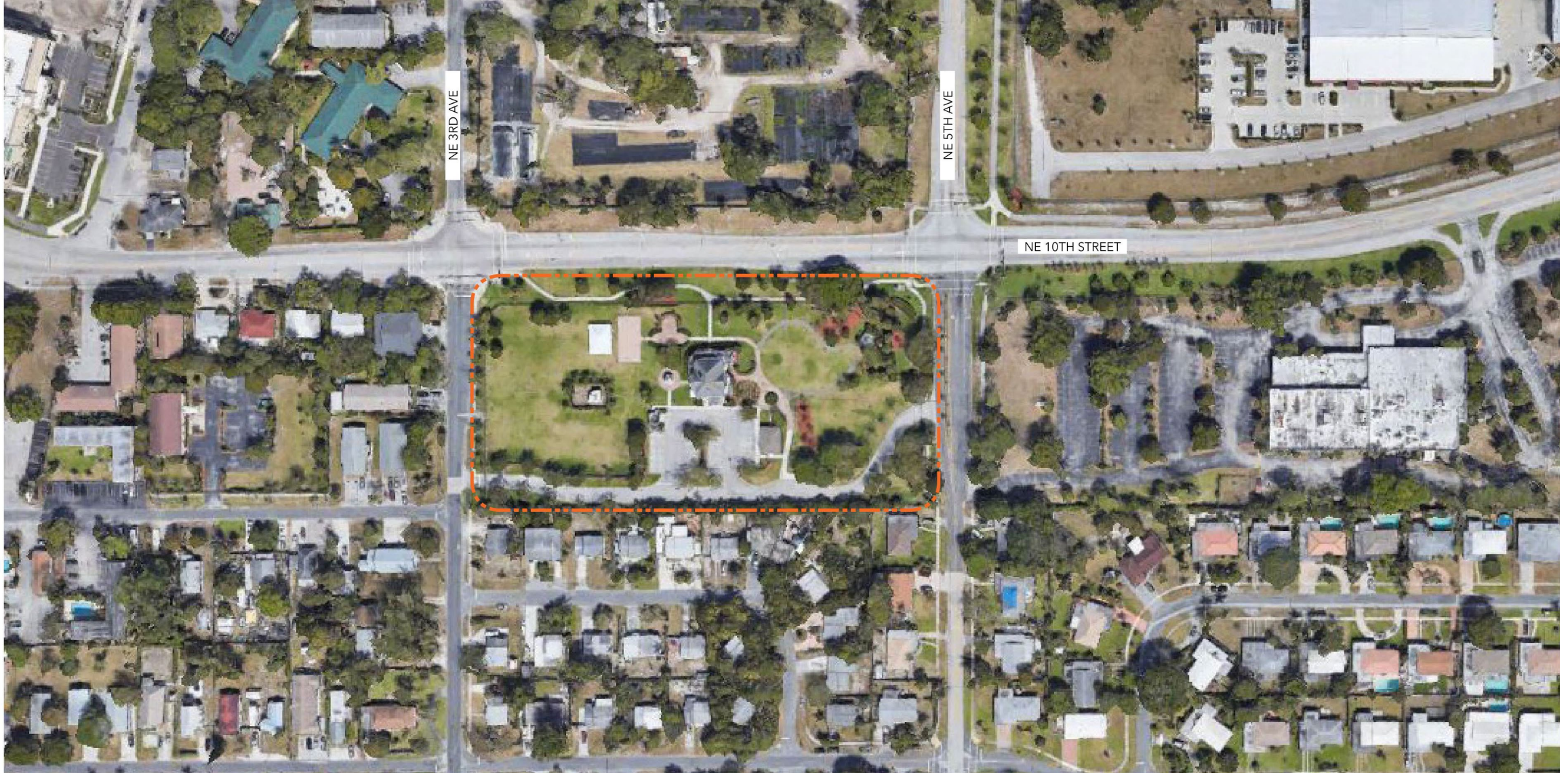


SOUTH ELEVATION

SCALE: 1/16" = 1'-0"

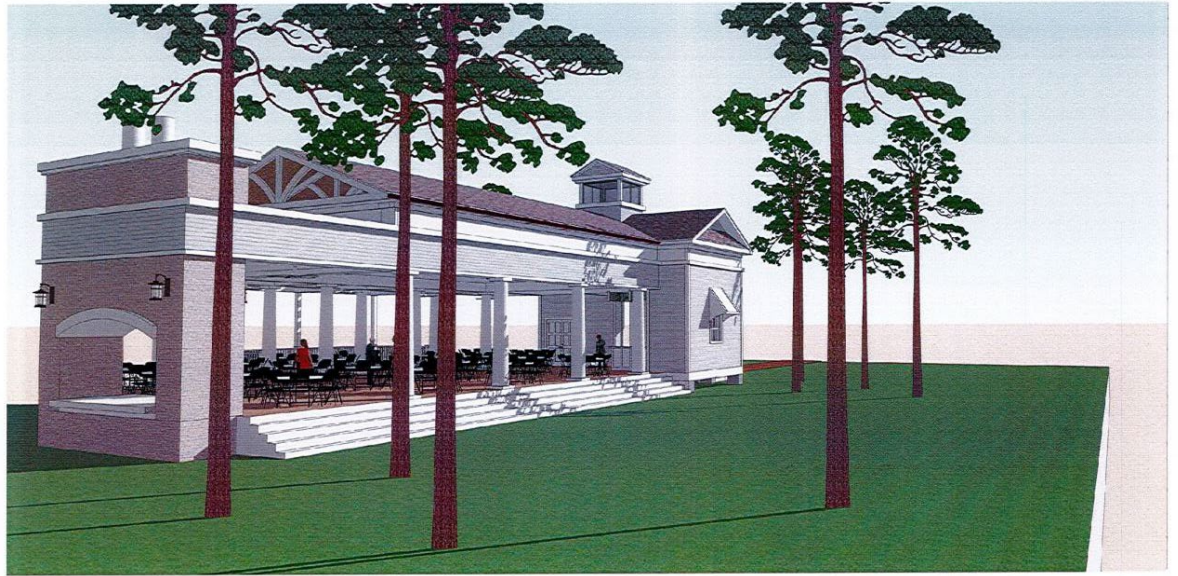
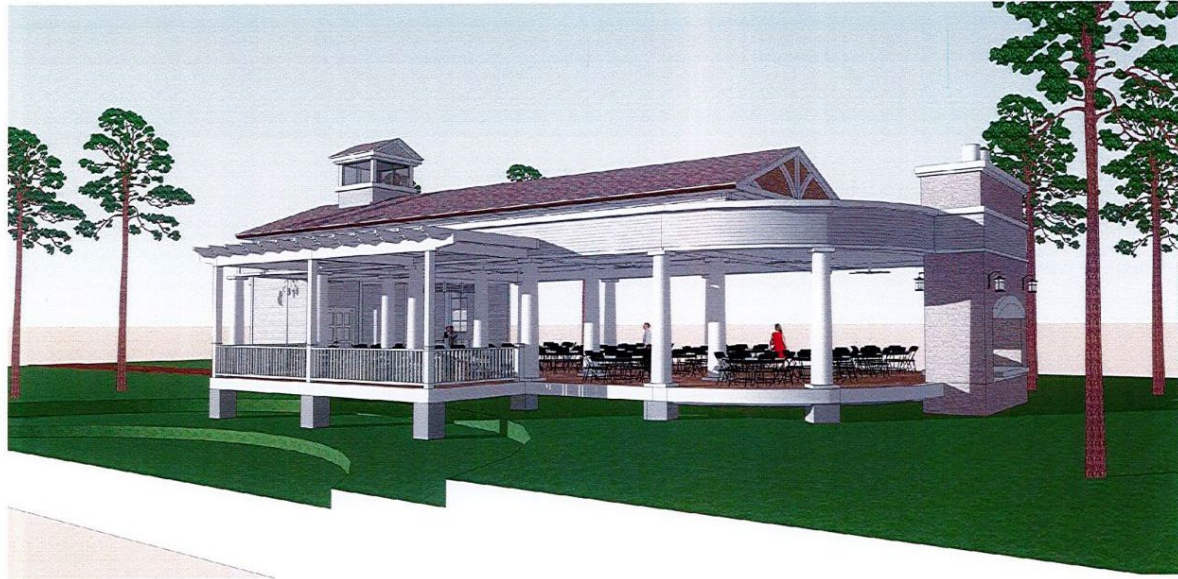
CENTENNIAL PARK

EXISTING AERIAL



CENTENNIAL PARK

PREVIOUS PAVILION CONCEPTUAL DESIGN



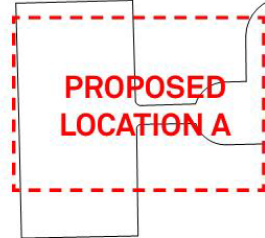
IN HOT-HUMID CLIMATES, ARCHITECTURE SHOULD LOOK AT VERNACULAR TRADITIONS WHICH CAPTURE PREVAILING BREEZES, PROVIDE LARGE OVERHANGS AND PORCHES FOR SHADE AND PASSIVE COOLING.



CENTENNIAL PARK

N.E. 10TH STREET

N.E. 5TH AVENUE



**PROPOSED
LOCATION A**



**PROPOSED
LOCATION B**

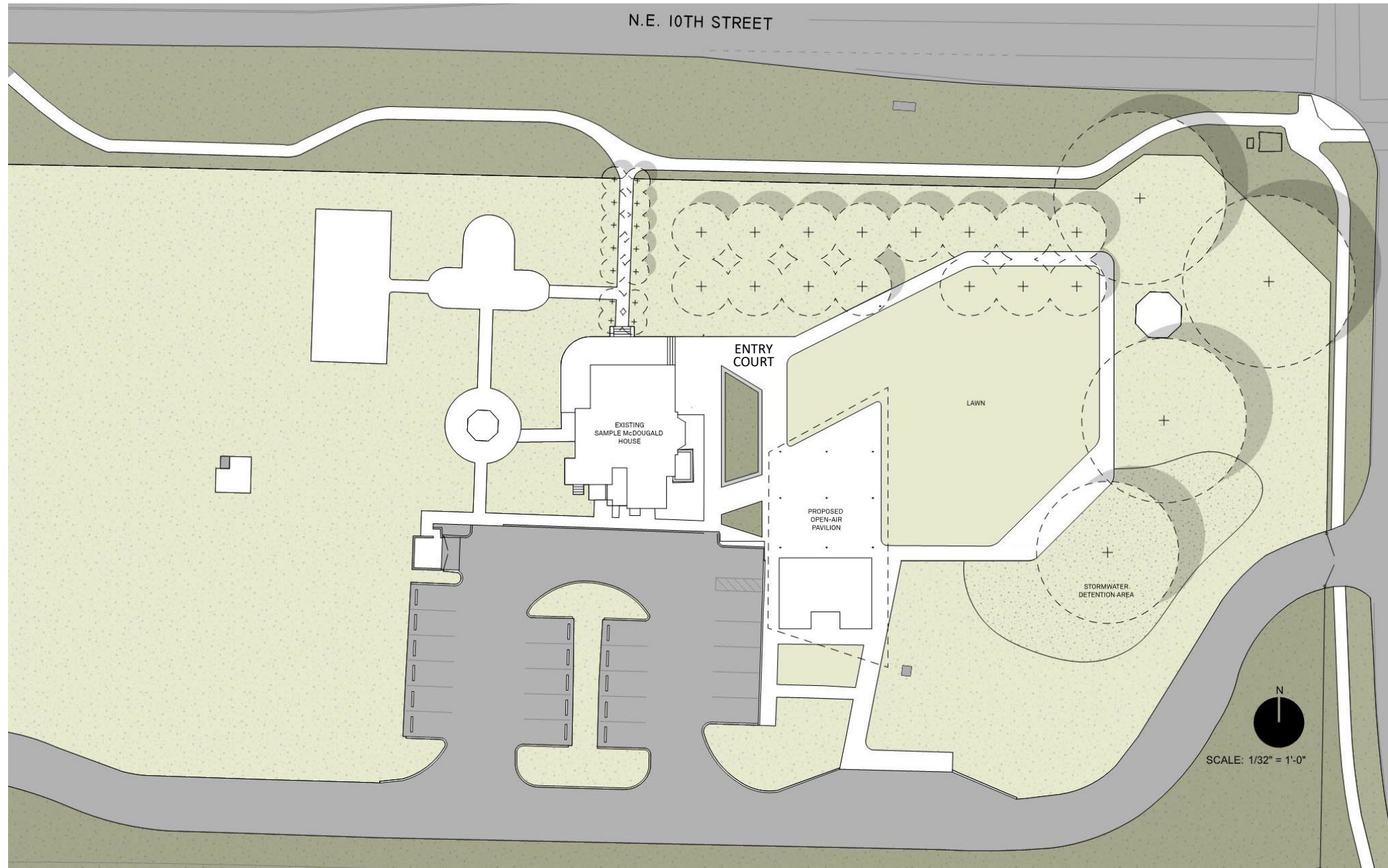


**PROPOSED
LOCATION C**

EXISTING
SAMPLE McDOUGALD
HOUSE



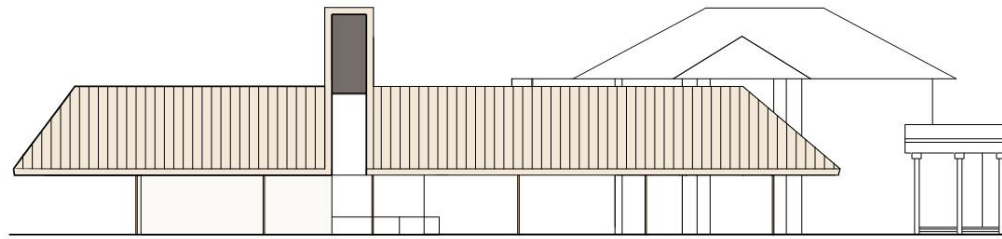
CENTENNIAL PARK



CENTENNIAL PARK – CONCEPT 1

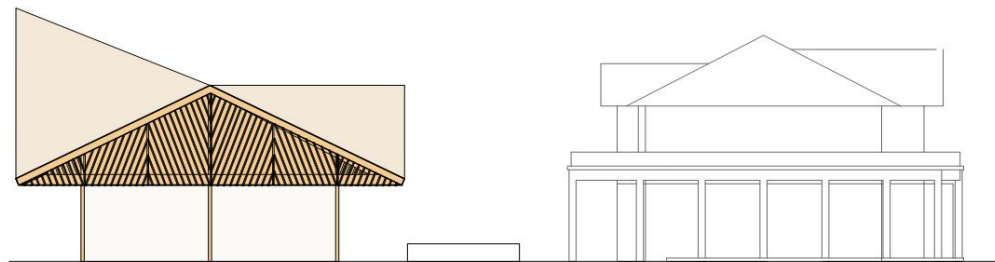


CENTENNIAL PARK – CONCEPT 1



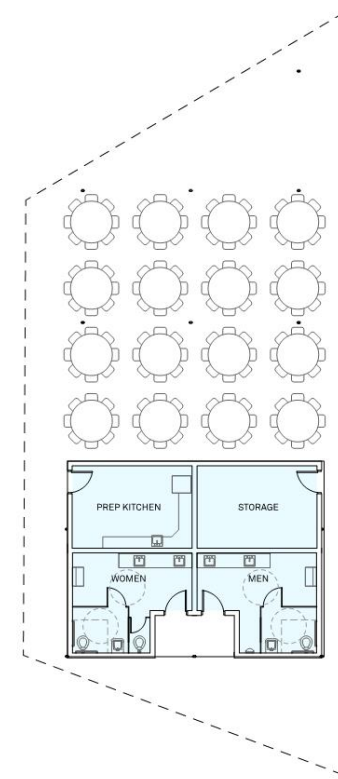
EAST ELEVATION

SCALE: 1/16" = 1'-0"



NORTH ELEVATION

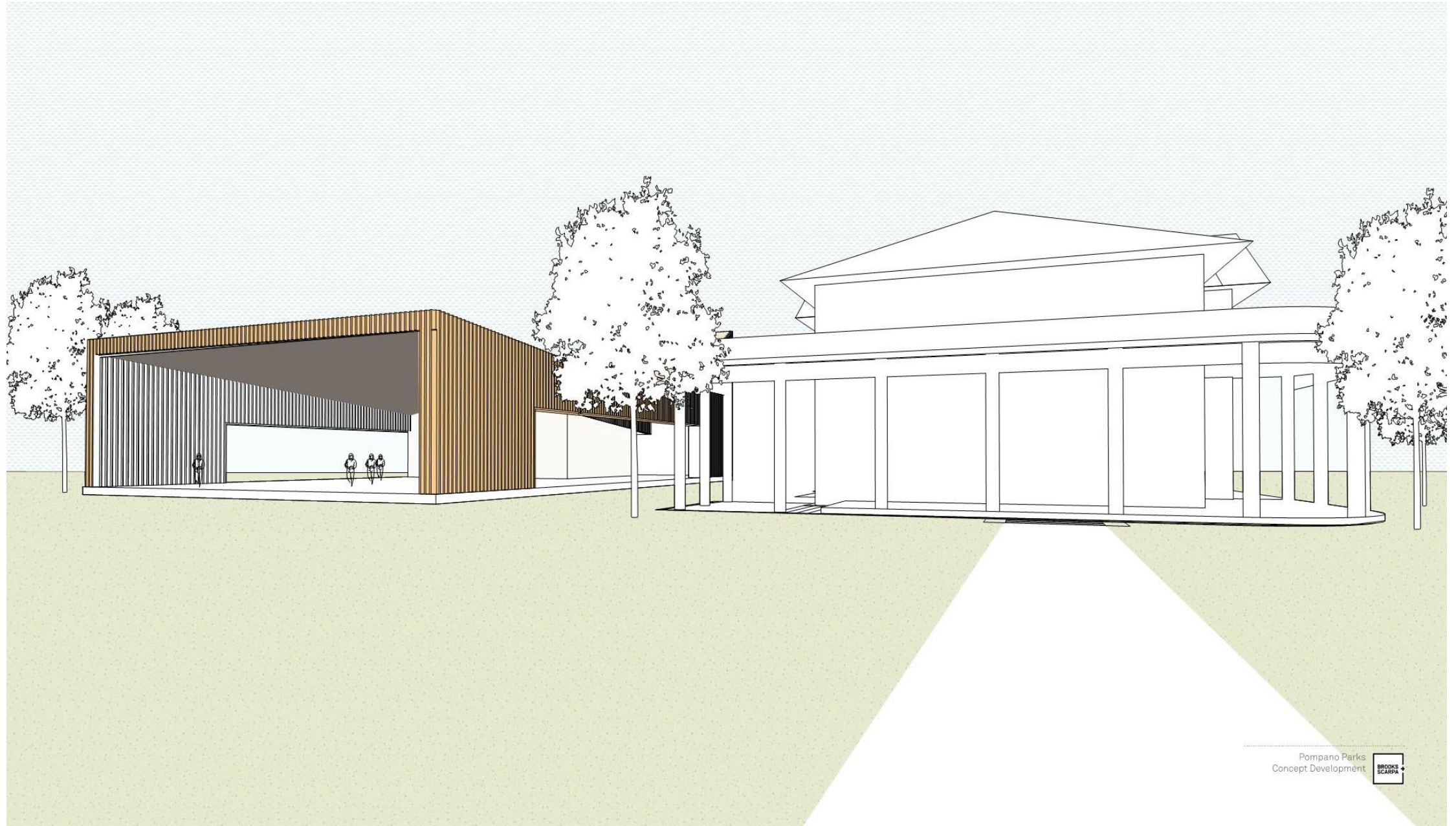
SCALE: 1/16" = 1'-0"



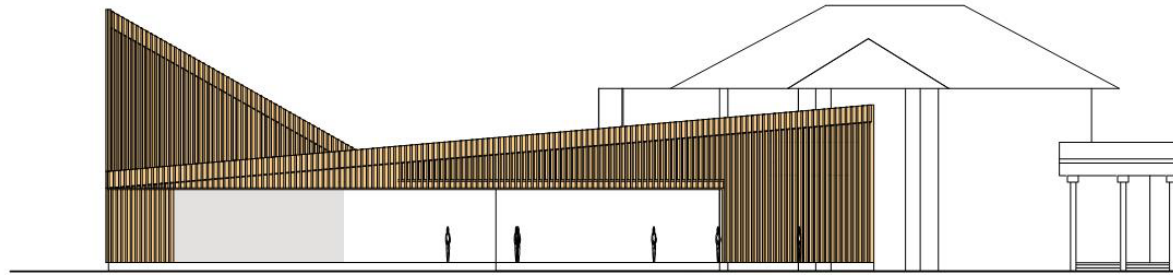
FLOOR PLAN

SCALE: 1/16" = 1'-0"

CENTENNIAL PARK – CONCEPT 2

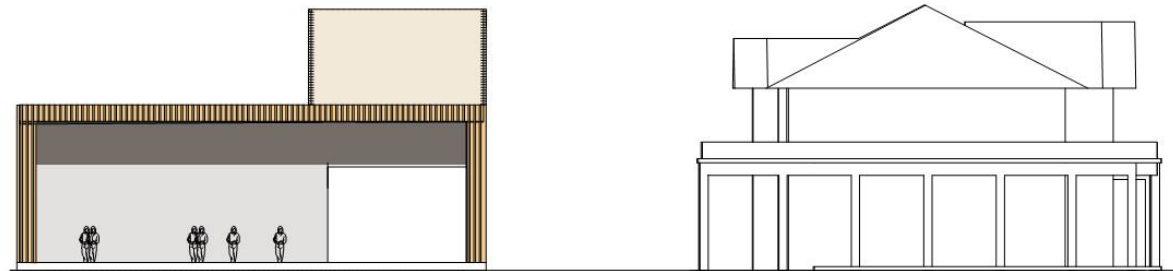


CENTENNIAL PARK – CONCEPT 2



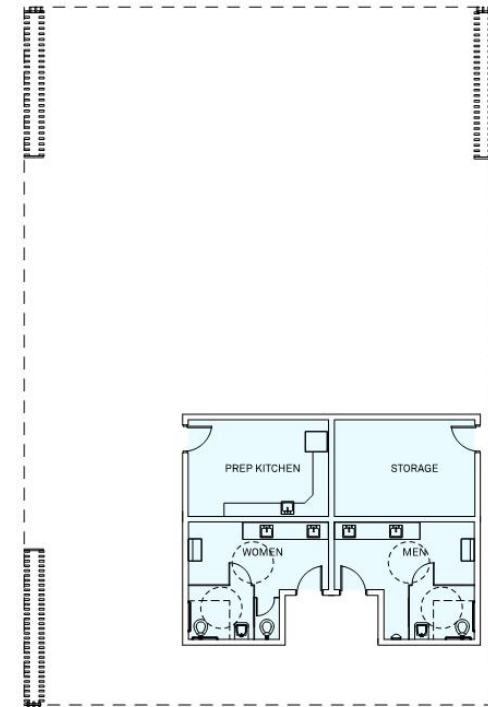
EAST ELEVATION

SCALE: 1/16" = 1'-0"



NORTH ELEVATION

SCALE: 1/16" = 1'-0"



FLOOR PLAN

SCALE: 1/16" = 1'-0"



QUESTIONS?

