

# POMPANO PARKS GO BONDS

## YOUTH SPORTS COMPLEX

### CENTENNIAL PARK

PUBLIC MEETING #2

July 18, 2019



Tradition, Integrity, Excellence



# POMPANO BEACH PARKS

Centennial Pavilion  
+  
Youth Sports Complex



© 2014 Brooks Scarpa



**CENTENNIAL PARK**  
+/- 5 ACRES

**YOUTH SPORTS COMPLEX**  
+/- 12 ACRES

NE 5TH AVE

NE 10TH STREET

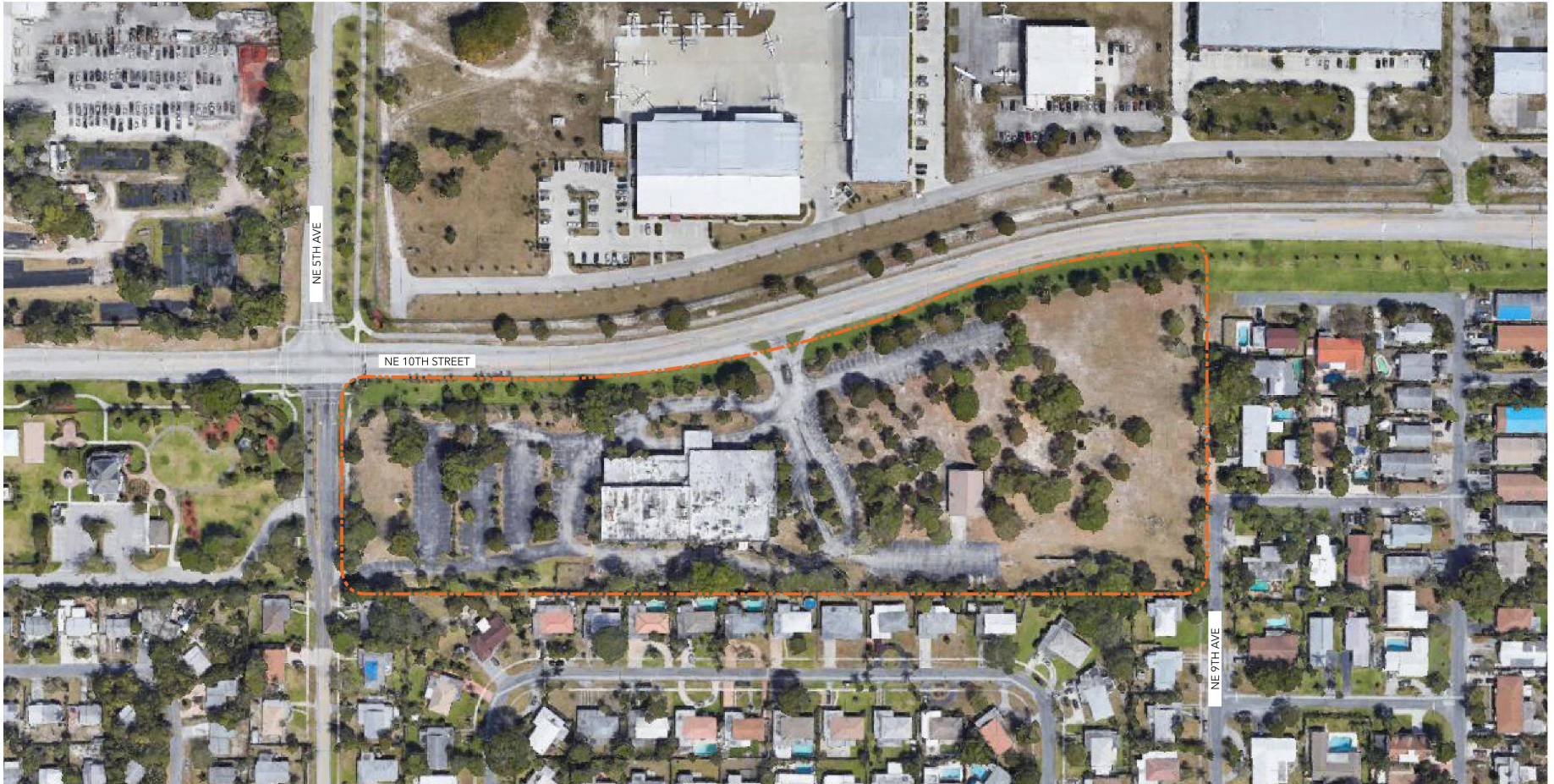
NE 3RD AVE

NE 8TH STREET

NE 9TH AVE

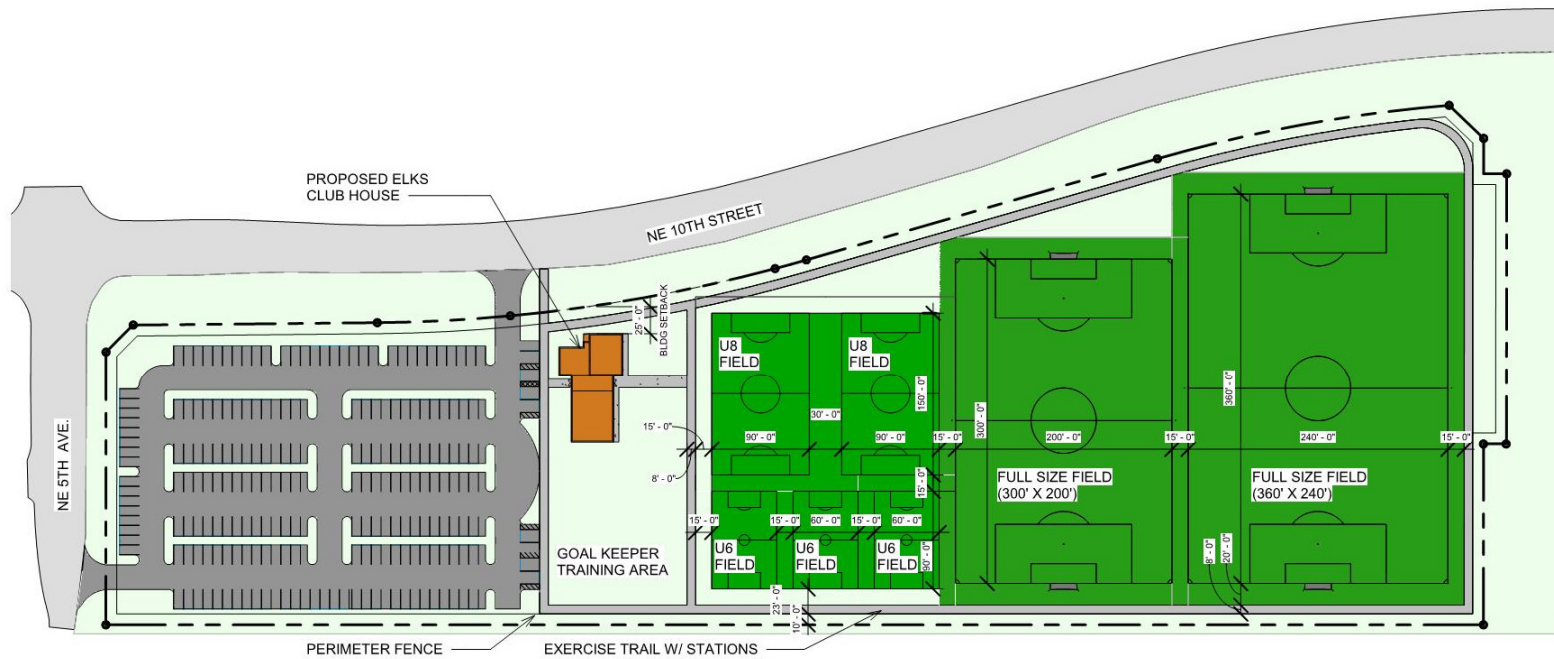
# YOUTH SPORTS COMPLEX

## EXISTING AERIAL



# YOUTH SPORTS COMPLEX

## PREVIOUS CONCEPTUAL DESIGNS



# YOUTH SPORTS COMPLEX

## PREVIOUS CONCEPTUAL DESIGNS



| AREA CALCS         |         |
|--------------------|---------|
| Room Name          | Area    |
| WOMENS RESTROOM    | 381 SF  |
| MENS RESTROOM      | 361 SF  |
| ELECTRICAL         | 88 SF   |
| MECHANICAL         | 105 SF  |
| JANITOR CLOSET     | 54 SF   |
| STORAGE            | 67 SF   |
| STORAGE            | 524 SF  |
| LOBBY              | 744 SF  |
| RECEPTION DESK     | 120 SF  |
| FILE ROOM          | 141 SF  |
| MANAGER OFFICE     | 124 SF  |
| BREAK ROOM         | 137 SF  |
| MULTIPURPOSE ROOMS | 541 SF  |
| MULTIPURPOSE ROOM  | 541 SF  |
| TOTAL              | 3927 SF |
| WALLS              | 624 SF  |
| GROSS BUILDING     | 4546 SF |

# RESULTS FROM MEETING #1

**ACTIVITIES**



**EXERCISE** **PLAY**

**SHADE**



**STRUCTURE** **CANOPY TREES**

**POMPANO BEACH YOUTH SPORTS COMPLEX**



**FURNISHINGS**



**BENCHES** **RECEPTACLES**

**WALKWAY SURFACES**



**ASPHALT** **CRUSHED STONE** **CONCRETE** **PAVERS**

**POMPANO BEACH YOUTH SPORTS COMPLEX**





# RESULTS FROM MEETING #1

**LIGHTING**

PARKING LOT

PEDESTRIAN

BOLLARDS

FIELD LIGHTS

**POMANO BEACH YOUTH SPORTS COMPLEX**

**PLANTING STYLE**

NATURAL

FORMAL

DRAINAGE SWALES

NATURAL/BIO-SWALE

STANDARD

**POMANO BEACH YOUTH SPORTS COMPLEX**

# RESULTS FROM MEETING #1

**SPORTS FIELD**



**ARTIFICIAL TURF**      **NATURAL TURF**

**AUDIENCE SEATING**



**BLEACHERS**      **LAWN CHAIRS**

**POMPANO BEACH YOUTH SPORTS COMPLEX**



**POMPANO BEACH**  
FLORIDA'S WINDSURF BEACH



# CONCEPT 1



# CONCEPT 2





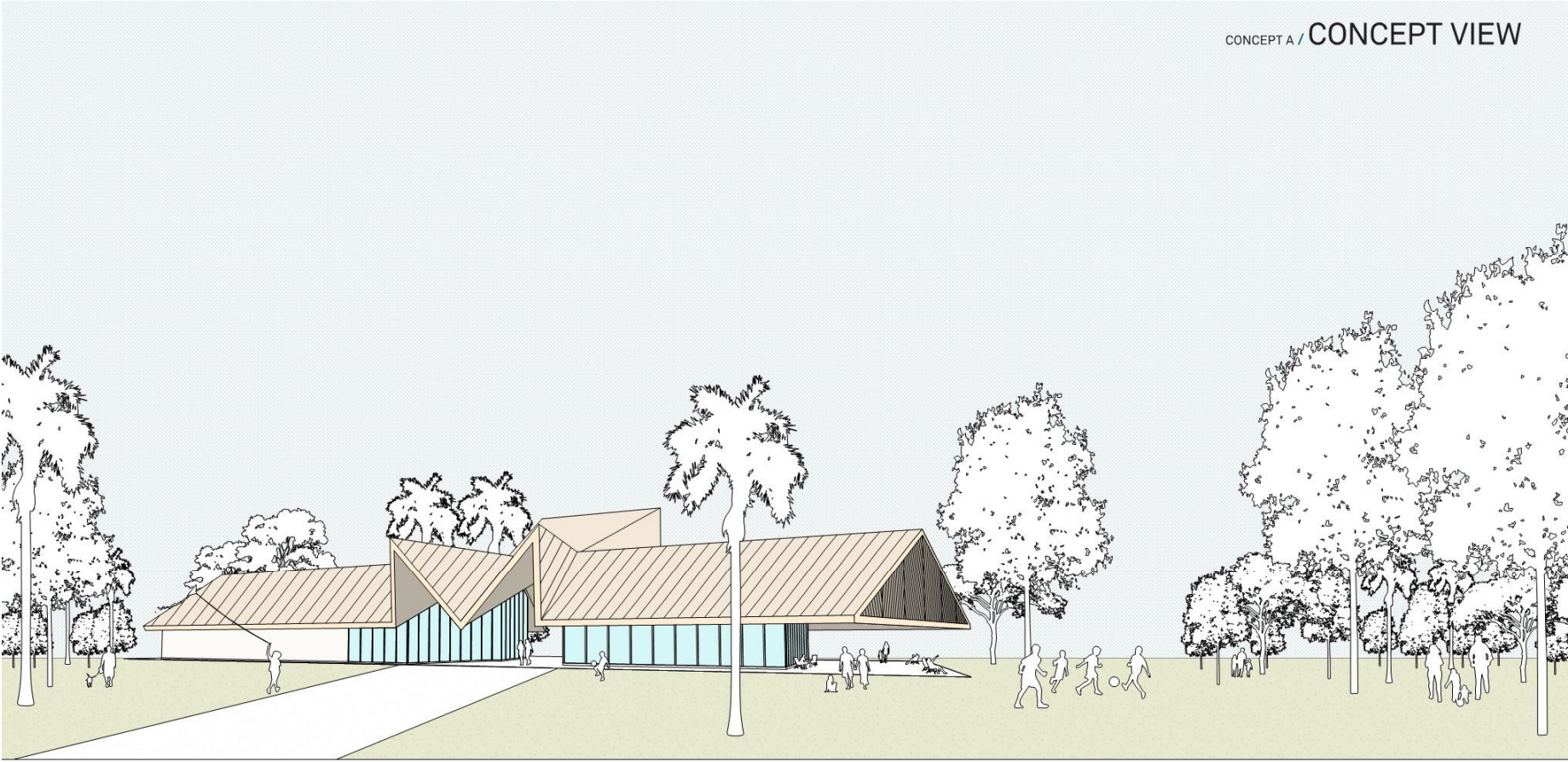
# MATERIALS



# MATERIALS



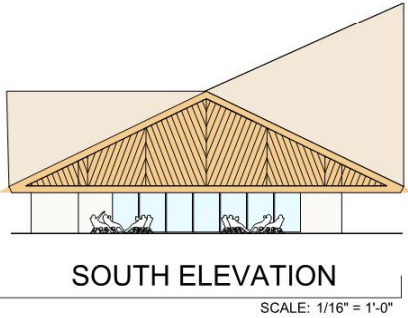
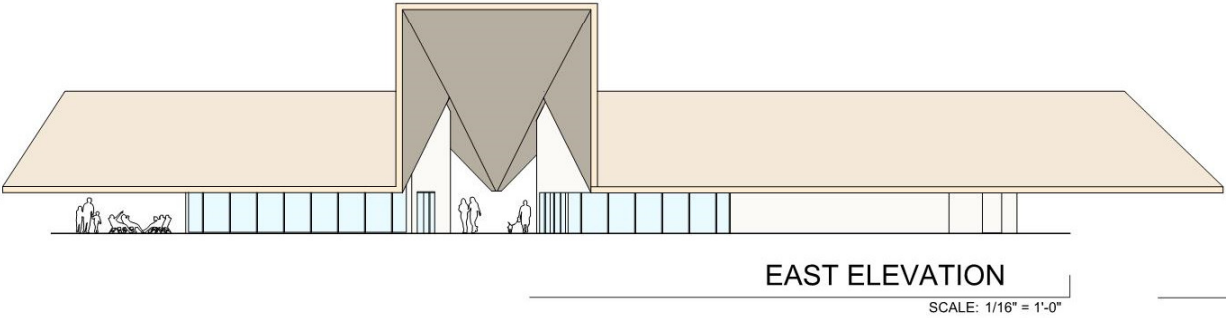
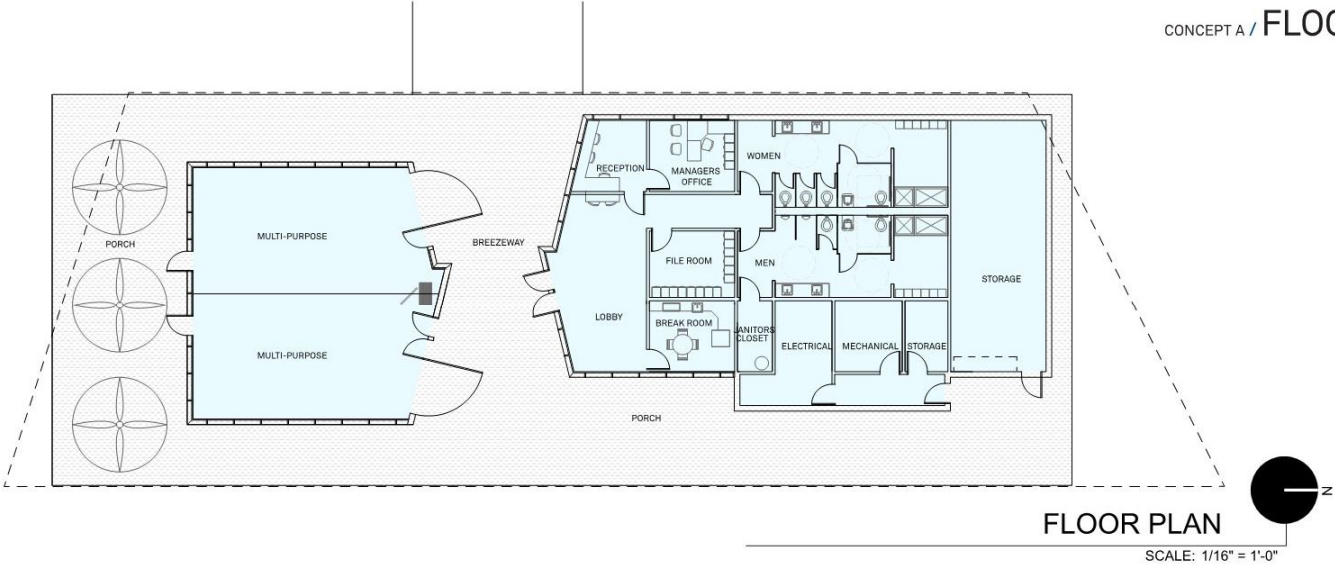
# PAVILION/RESTROOM BUILDING – CONCEPT 1





# PAVILION/RESTROOM BUILDING – CONCEPT 1

CONCEPT A / FLOOR PLAN + ELEVATIONS



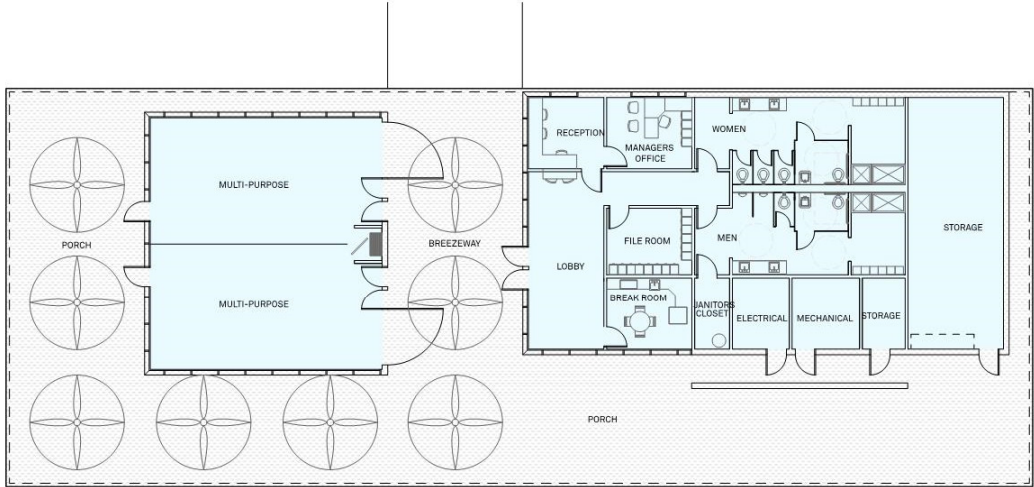
# PAVILION/RESTROOM BUILDING – CONCEPT 2

CONCEPT B / CONCEPT VIEW



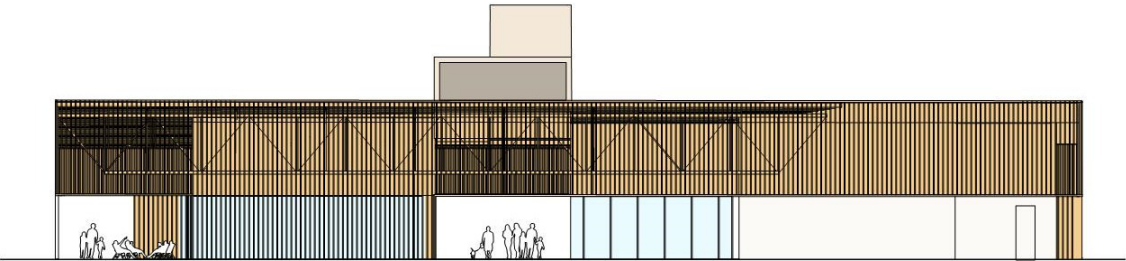
# PAVILION/RESTROOM BUILDING – CONCEPT 2

CONCEPT B / FLOOR PLAN + ELEVATIONS



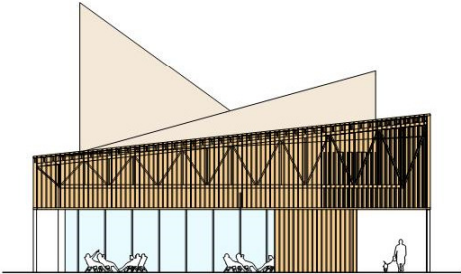
FLOOR PLAN

1/16" = 1'-0"



EAST ELEVATION

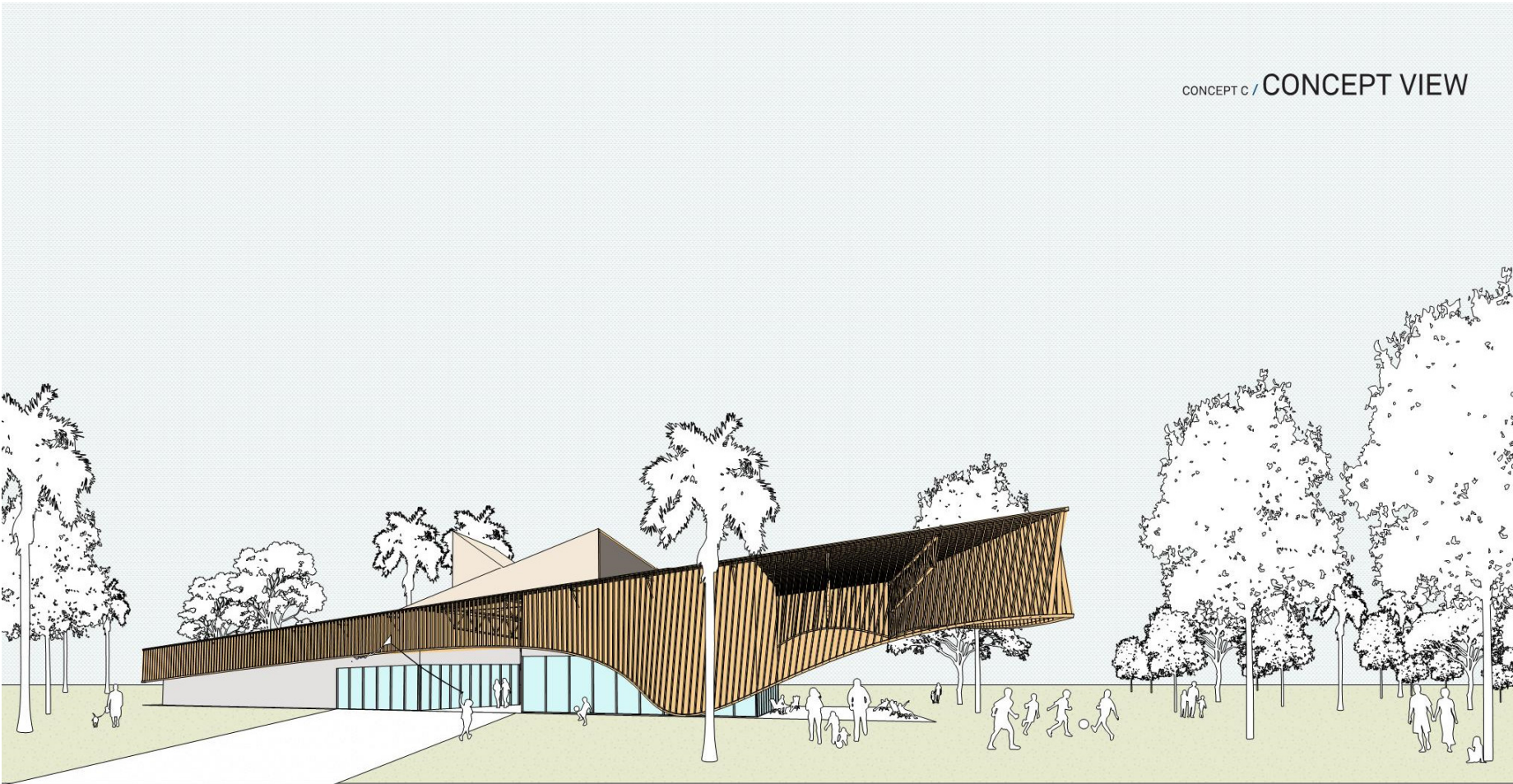
SCALE: 1/16" = 1'-0"



SOUTH ELEVATION

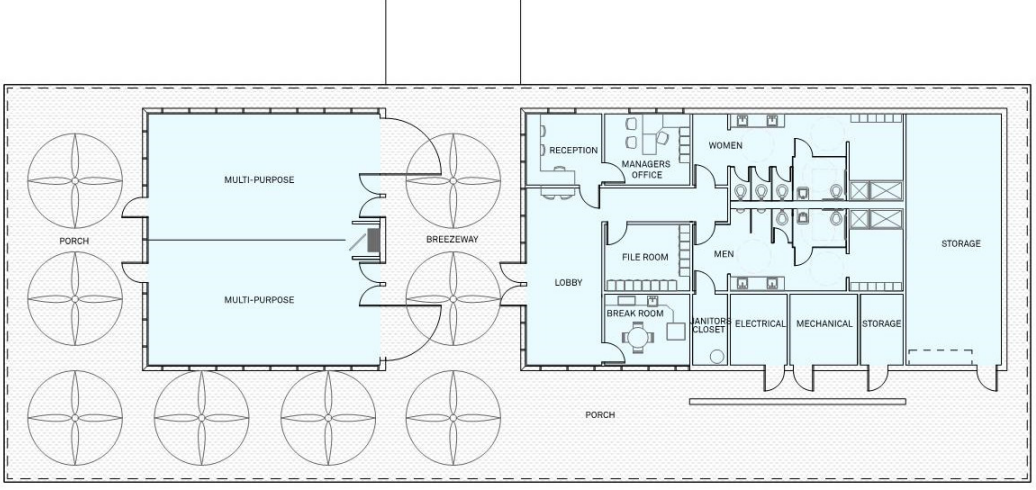
SCALE: 1/16" = 1'-0"

# PAVILION/RESTROOM BUILDING – CONCEPT 3



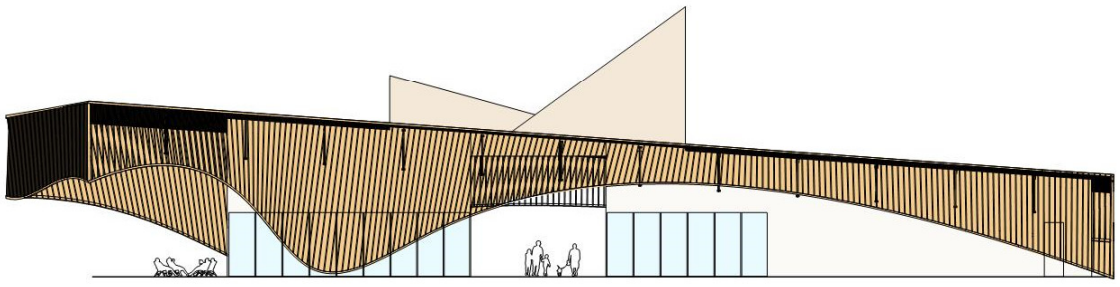
# PAVILION/RESTROOM BUILDING – CONCEPT 3

CONCEPT C / FLOOR PLAN + ELEVATIONS



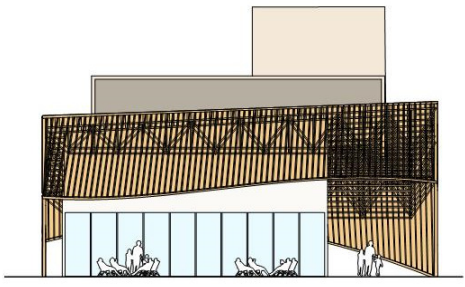
FLOOR PLAN

1/16" = 1'-0"



EAST ELEVATION

SCALE: 1/16" = 1'-0"



SOUTH ELEVATION

SCALE: 1/16" = 1'-0"

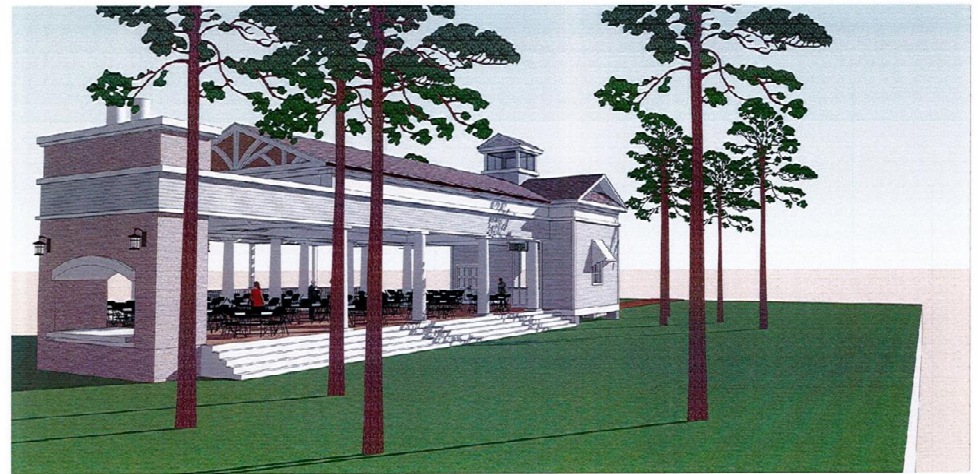
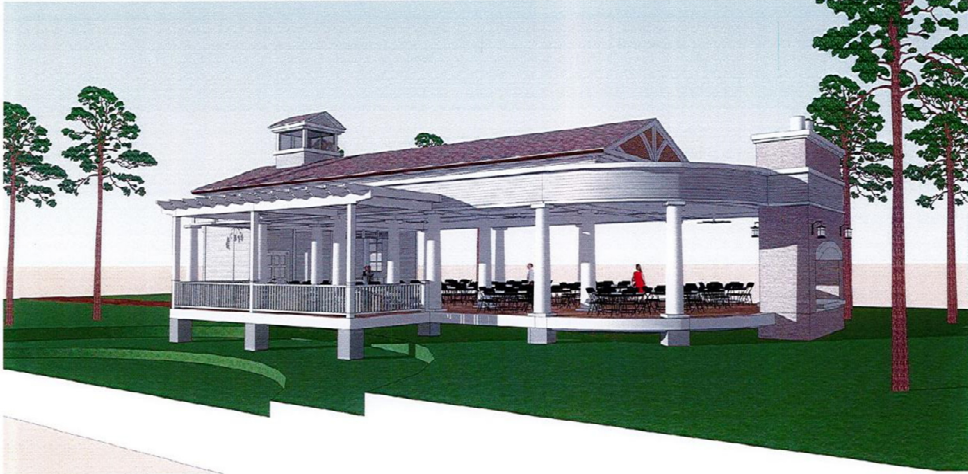
# CENTENNIAL PARK

## EXISTING AERIAL



# CENTENNIAL PARK

## PREVIOUS PAVILION CONCEPTUAL DESIGN

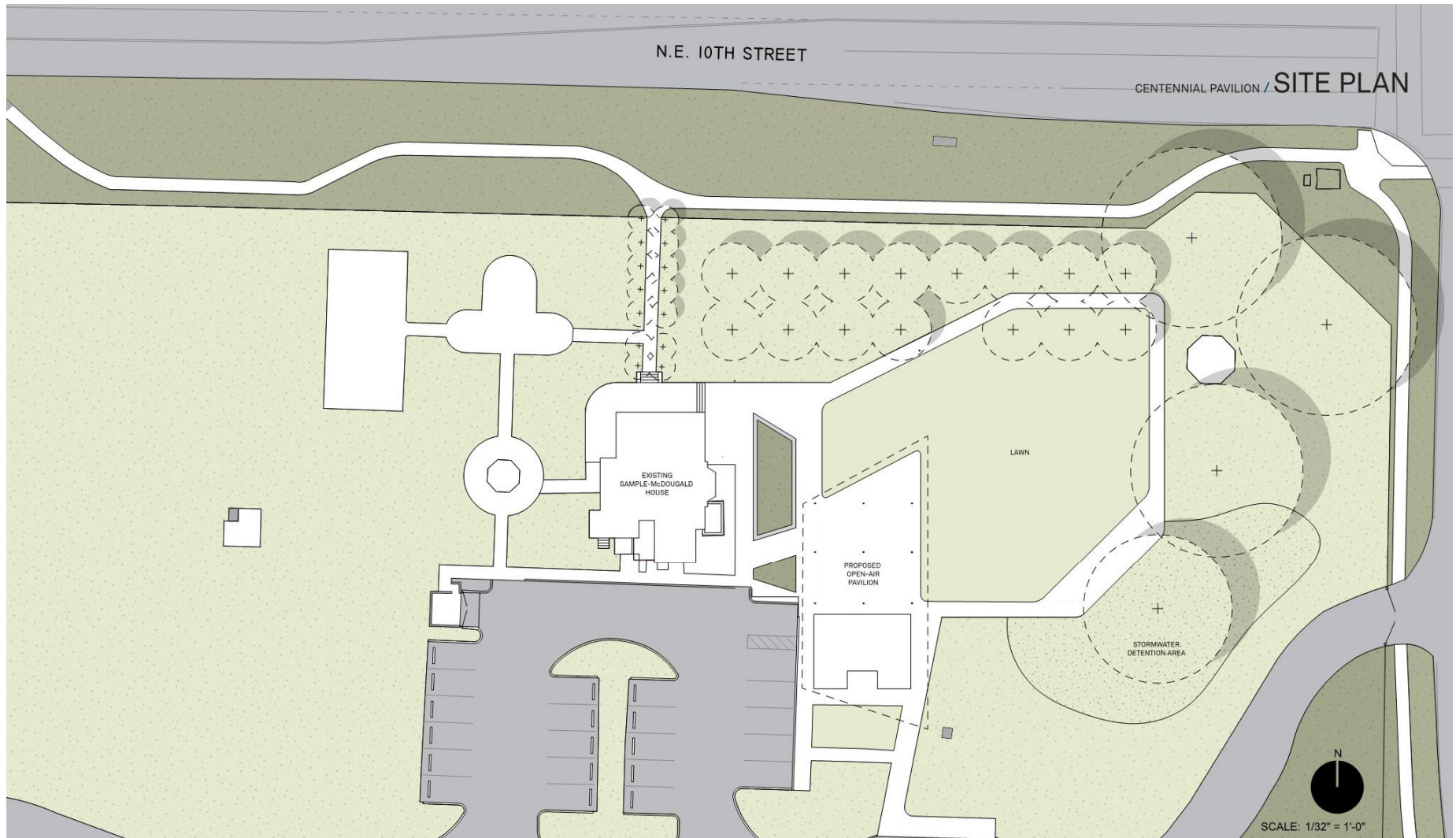


ARCHITECTURE IN A HOT-HUMID CLIMATE SHOULD  
LOOK AT VERNACULAR TRADITIONS WHICH  
CAPTURE PREVAILING BREEZES, PROVIDE LARGE  
OVERHANGS FOR SHADE AND PORCHES.





# CENTENNIAL PARK

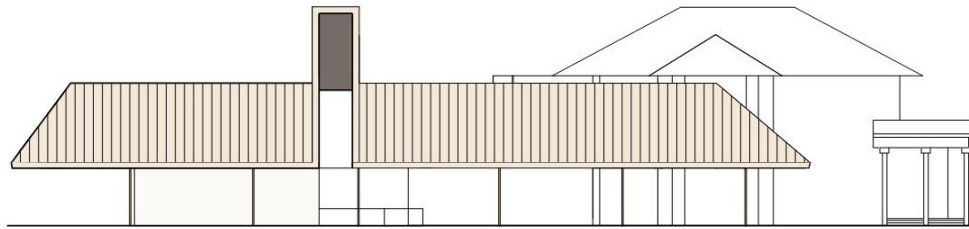


# CENTENNIAL PARK – CONCEPT 1



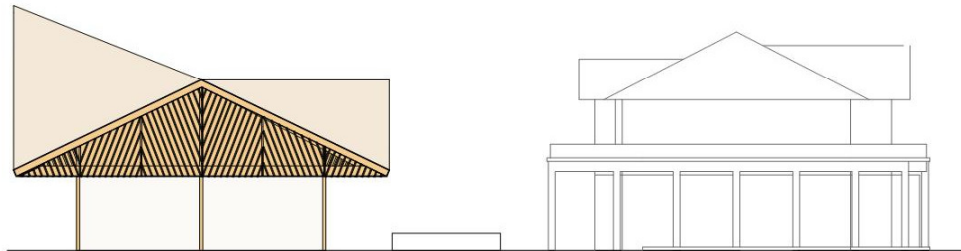
# CENTENNIAL PARK – CONCEPT 1

CONCEPT A / ELEVATION + FLOOR PLAN



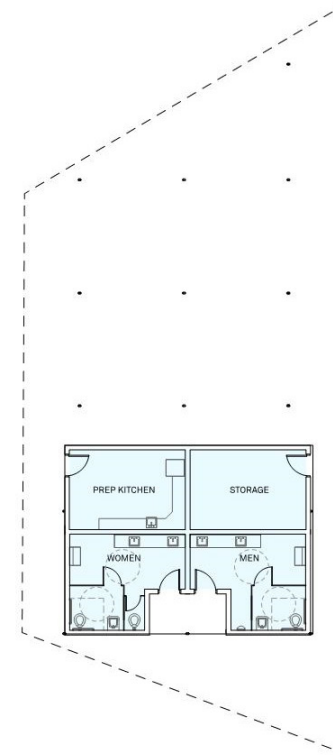
EAST ELEVATION

SCALE: 1/16" = 1'-0"



NORTH ELEVATION

SCALE: 1/16" = 1'-0"

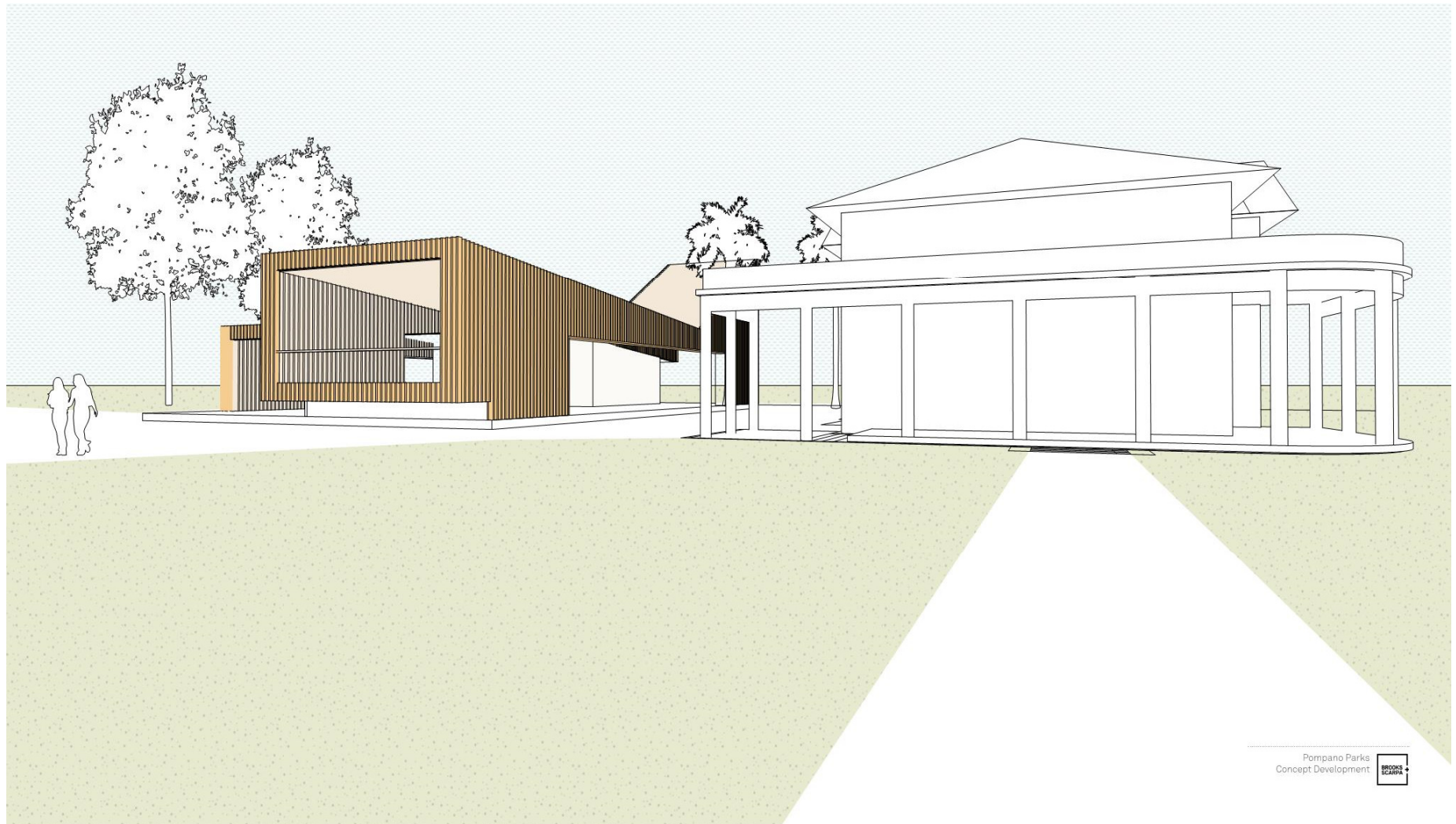


FLOOR PLAN

SCALE: 1/16" = 1'-0"

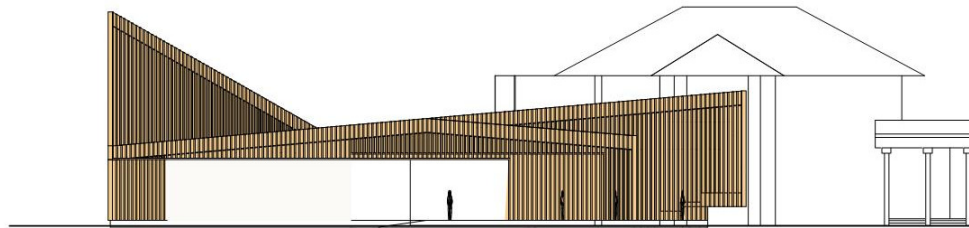


# CENTENNIAL PARK – CONCEPT 2



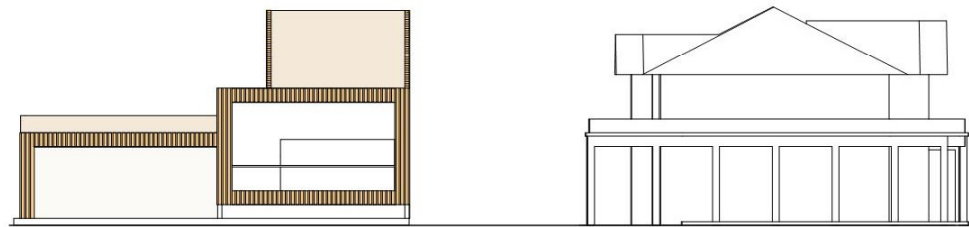
# CENTENNIAL PARK – CONCEPT 2

CONCEPT B / ELEVATIONS + FLOOR PLAN



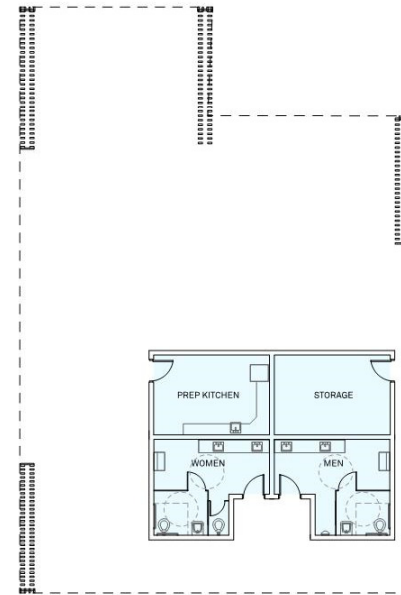
EAST ELEVATION

SCALE: 1/16" = 1'-0"



NORTH ELEVATION

SCALE: 1/16" = 1'-0"

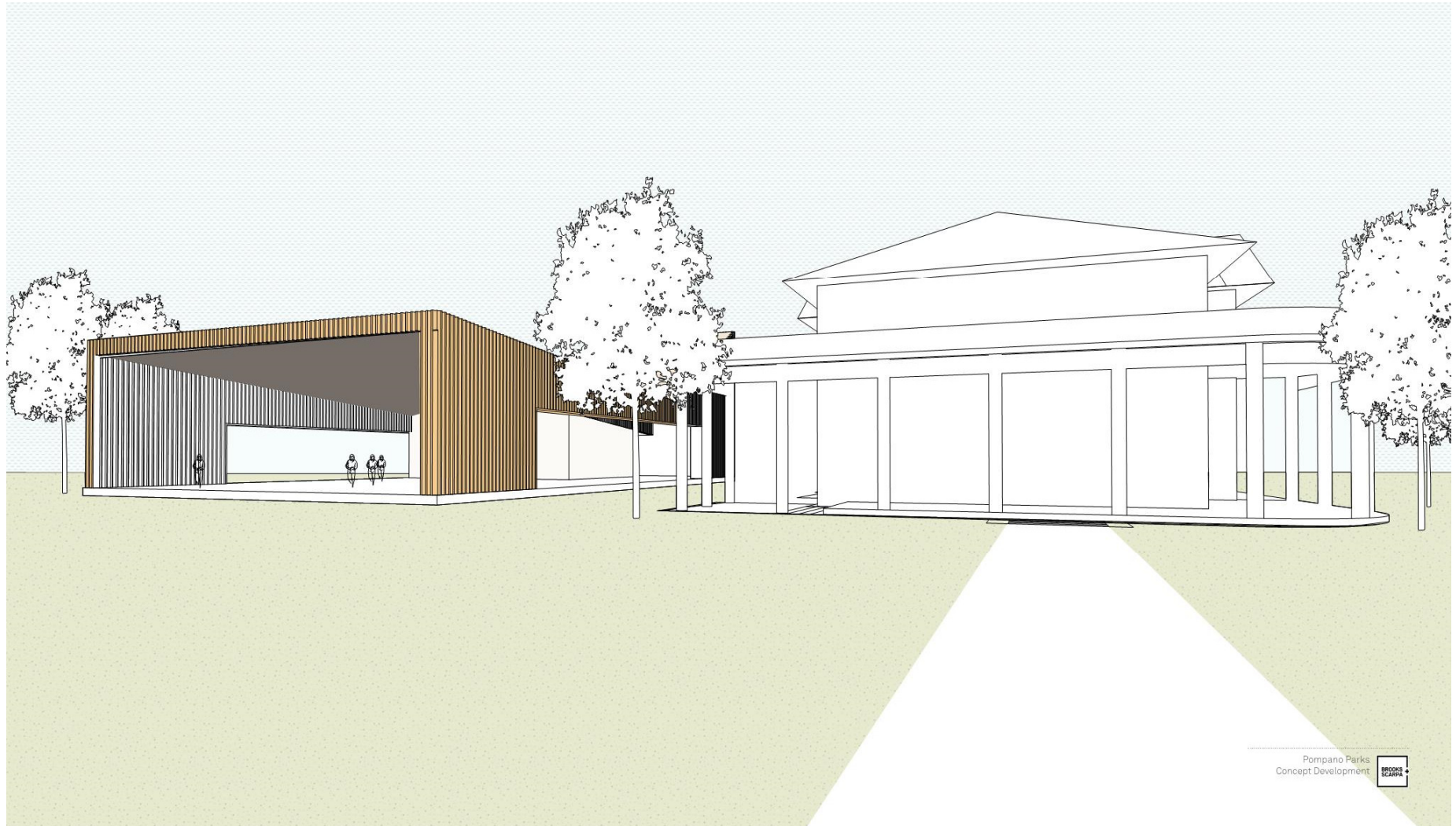


FLOOR PLAN

SCALE: 1/16" = 1'-0"

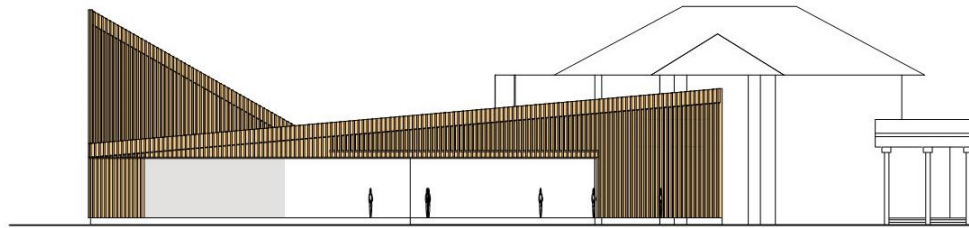


# CENTENNIAL PARK – CONCEPT 3



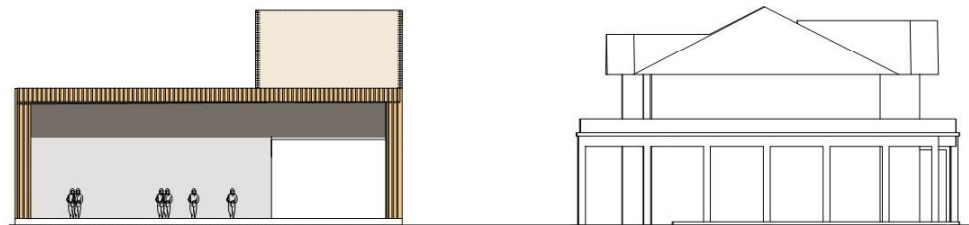
# CENTENNIAL PARK – CONCEPT 3

CONCEPT C / ELEVATIONS + FLOOR PLAN



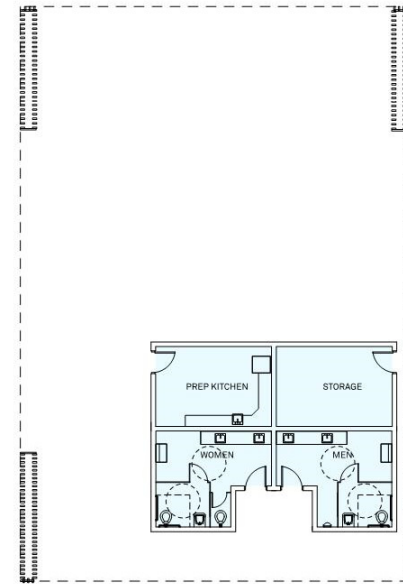
EAST ELEVATION

SCALE: 1/16" = 1'-0"



NORTH ELEVATION

SCALE: 1/16" = 1'-0"



FLOOR PLAN

SCALE: 1/16" = 1'-0"



QUESTIONS?

