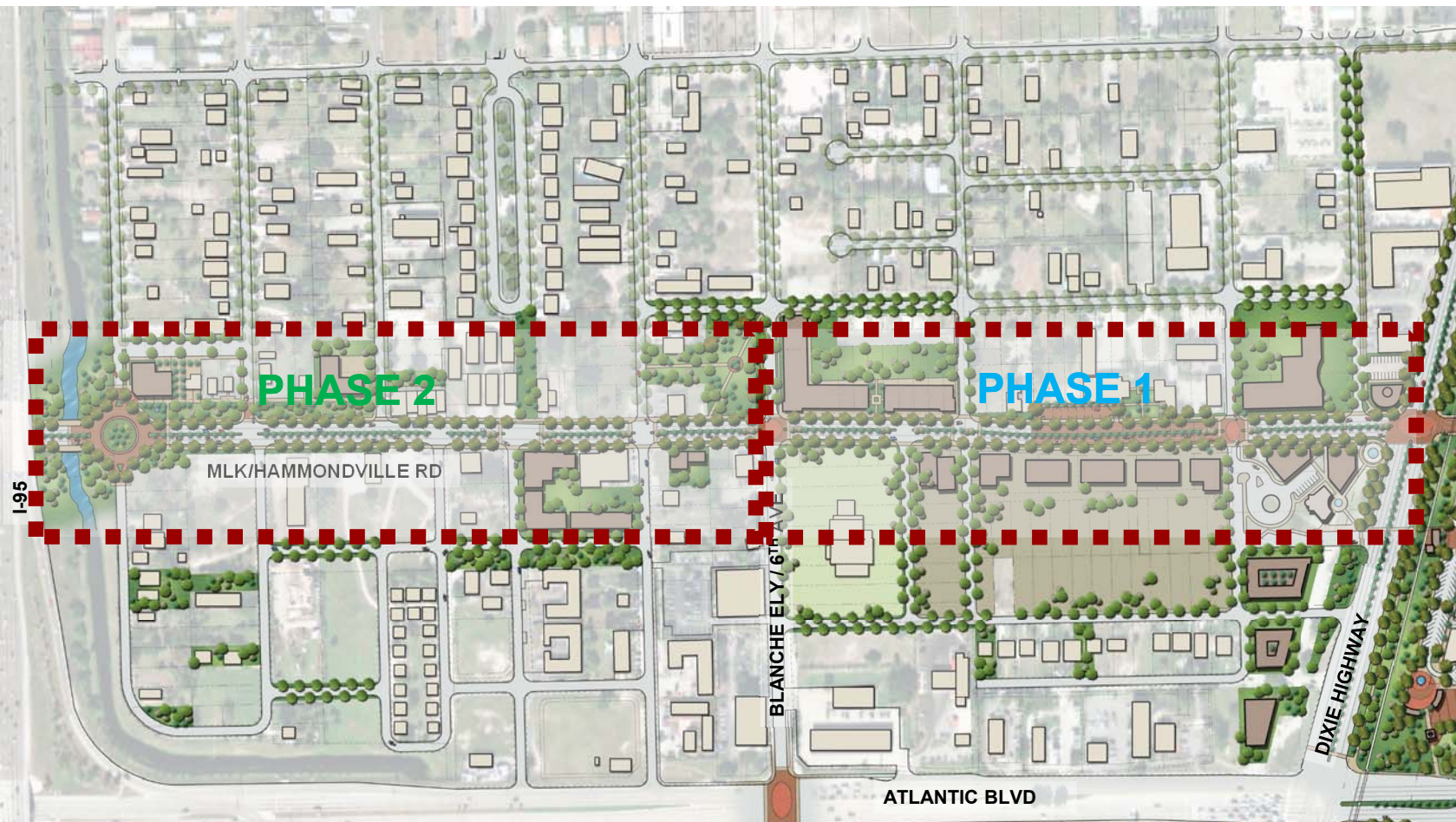


POMPANO G.O. BOND STREETScape  
DR. MARTIN LUTHER KING JR. BLVD. RECONSTRUCTION  
PHASE 2 (BETWEEN NW 10<sup>th</sup> AVE. AND NW 6<sup>th</sup> AVE.)  
CITY PROJECT NO. 19356

SECOND PUBLIC OUTREACH MEETING

JULY 29, 2019



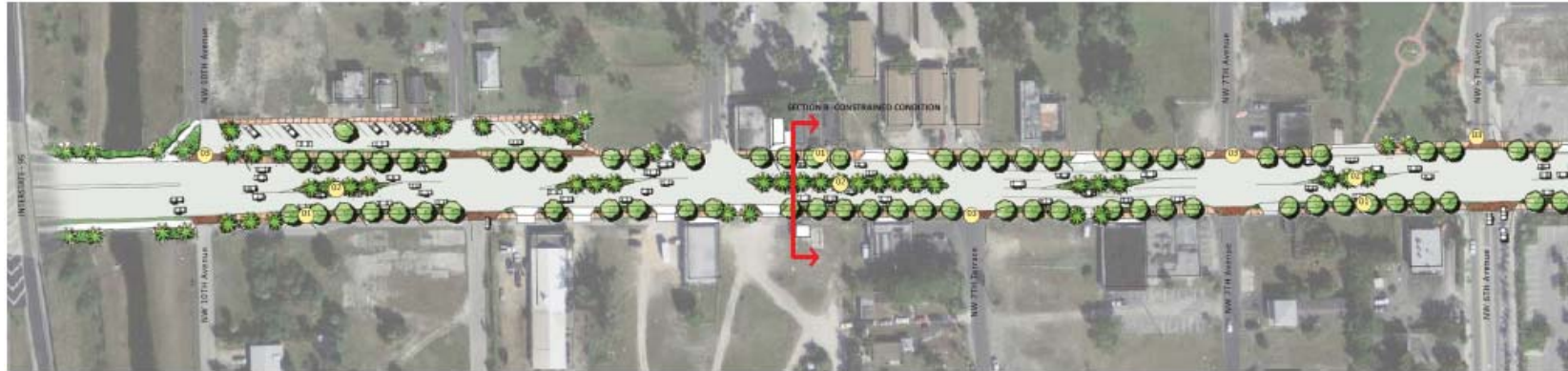


**MLK BLVD. – PHASE 2**

PROJECT  
BACKGROUND

---

CONSTRUCTION  
PHASING - 2014



WEST - MLK/HAMMONDVILLE



EAST - MLK/HAMMONDVILLE

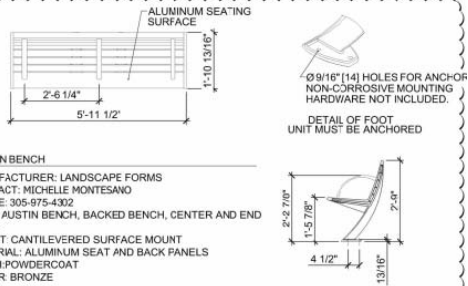
# MLK BLVD. – PHASE 2

## PROJECT BACKGROUND

## LANDSCAPE CONCEPT - 2012

# MLK BLVD. – PHASE 2

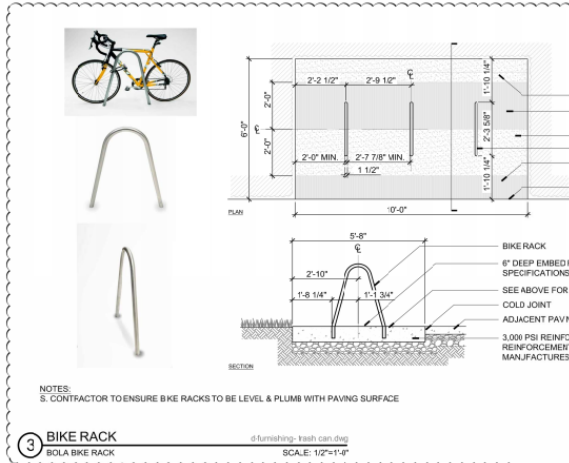
## PREVIOUSLY DESIGNED AND PERMITTED PLANS



**AUSTIN BENCH**  
 MANUFACTURER: LANDSCAPE FORMS  
 CONTACT: MICHELLE MONTESANO  
 PHONE: 305-975-4302  
 TYPE: AUSTIN BENCH, BACKED BENCH, CENTER AND END ARMS  
 MOUNT: CANTILEVERED SURFACE MOUNT  
 MATERIAL: ALUMINUM SEAT AND BACK PANELS  
 FINISH: POWDERCOAT  
 COLOR: BRONZE

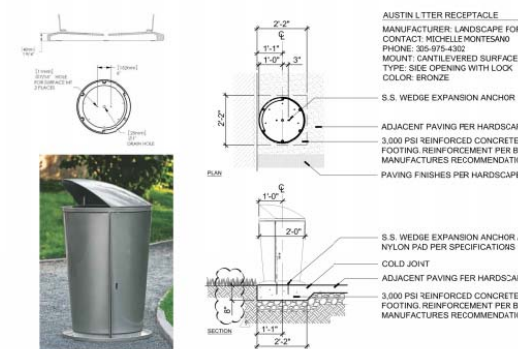
- NOTES:**
1. CONCRETE FOOTERS TO BE CURED FOR 28 DAYS PRIOR TO INSTALLATION OF BENCHES.
  2. STAINLESS STEEL SHIMS TO BE USED AS REQUIRED TO SHIM BENCHES.
  3. ALL ANCHORS TO BE STAINLESS STEEL AND CORROSION RESISTANT PER MANUFACTURER'S SPECIFICATIONS. CONTRACTOR TO SUPPLY ALL ANCHORS.
  4. EXPANSION JOINTS AS REQUIRED.
  5. REFER TO HARDSCAPE AND LANDSCAPE PLANS FOR ADJACENT CONDITIONS PER INSTALLATION.
  6. CONTRACTOR TO SUBMIT SIGNED AND SEALED SHOP DRAWINGS OF FOOTERS WITH REINFORCING AS REQUIRED.

**2 BENCH**  
 AUSTIN BACKED BENCH  
 SCALE: 1/2"=1'-0"



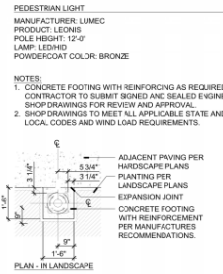
**NOTES:**  
 S. CONTRACTOR TO ENSURE BIKE RACKS TO BE LEVEL & PLUMB WITH PAVING SURFACE

**3 BIKE RACK**  
 BIOLA BIKE RACK  
 SCALE: 1/2"=1'-0"



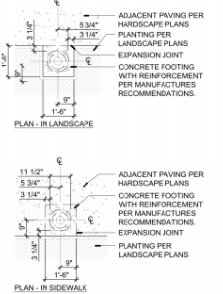
- NOTES:**
1. ALL ANCHORS TO BE STAINLESS STEEL AND CORROSION RESISTANT PER MANUFACTURER'S SPECIFICATIONS. CONTRACTOR TO SUPPLY ALL ANCHORS.
  2. EXPANSION JOINTS AS REQUIRED.
  3. REFER TO HARDSCAPE AND LANDSCAPE PLANS FOR ADJACENT CONDITIONS PER INSTALLATION.
  4. CONTRACTOR TO SUBMIT SIGNED AND SEALED SHOP DRAWINGS OF FOOTERS WITH REINFORCING AS REQUIRED.

**1 TRASH RECEPTACLE**  
 AUSTIN SIDE OPENING  
 SCALE: 1/2"=1'-0"



**PEDESTRIAN LIGHT**  
 MANUFACTURER: LUMEC  
 PRODUCT: LEONIS  
 POLE HEIGHT: 12'-0"  
 LAMP: LED/MD  
 POWDERCOAT COLOR: BRONZE

- NOTES:**
1. CONCRETE FOOTING WITH REINFORCING AS REQUIRED. CONTRACTOR TO SUBMIT SIGNED AND SEALED ENGINEERS SHOP DRAWINGS FOR REVIEW AND APPROVAL.
  2. SHOP DRAWINGS TO MEET ALL APPLICABLE STATE AND LOCAL CODES AND WIND LOAD REQUIREMENTS.



**5 PEDESTRIAN LIGHTING**  
 LEONIS  
 SCALE: 1/2"=1'-0"

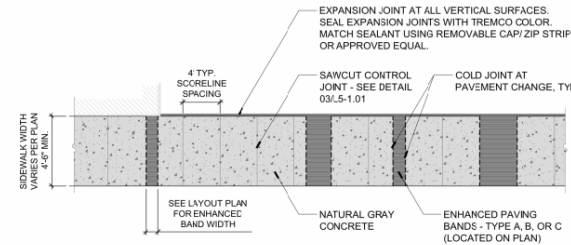


**SPECIFICATIONS**

Lighting pole shall be constructed of galvanized steel with a minimum thickness of 1/8\"/>

**Notes:**

1. All materials shall be new unless otherwise specified.
2. All materials shall be of the highest quality available.
3. All materials shall be of the highest quality available.
4. All materials shall be of the highest quality available.
5. All materials shall be of the highest quality available.
6. All materials shall be of the highest quality available.
7. All materials shall be of the highest quality available.
8. All materials shall be of the highest quality available.
9. All materials shall be of the highest quality available.
10. All materials shall be of the highest quality available.



- NOTES:**
1. CONTRACTOR TO MATCH QUANTITY OF ENHANCED PAVING BANDS TO REPLICATE DESIGN INTENT AS SHOWN IN PLAN. FIELD ADJUST AS NECESSARY. FINAL LAYOUT APPROVAL BY OWNER OR LANDSCAPE ARCHITECT PRIOR TO POURING.
  2. CONTRACTOR TO INSTALL IN ACCORDANCE WITH MANUFACTURER'S SPECIFICATIONS.
  3. CONTRACTOR TO PROVIDE (3) THREE REFERENCE PROJECTS OF INSTALLATION FOR SIMILAR MATERIAL.
  4. CONTRACTOR TO PROVIDE MOCK-UPS FOR OWNER APPROVAL PRIOR TO ORDERING.
  5. SEEDED AGGREGATE TYPE TO BE APPROVED BY LANDSCAPE ARCHITECT.
  6. SEE CIVIL ENGINEERING PLANS FOR SPECIFIC DETAILS PERTAINING TO SIDEWALK AND CURB CONSTRUCTION.
  7. CONTRACTOR TO ENSURE 4'-0\"/>

**1 CONCRETE SIDEWALK PAVING**  
 SCALE: 3/16"=1'-0"

**CONCRETE TYPES**

- COLOR 1: STANDARD GRAY
- COLOR 2: INTEGRAL COLOR 'WESTWOOD BROWN' WITH SEEDED GLASS AGGREGATE FINISH

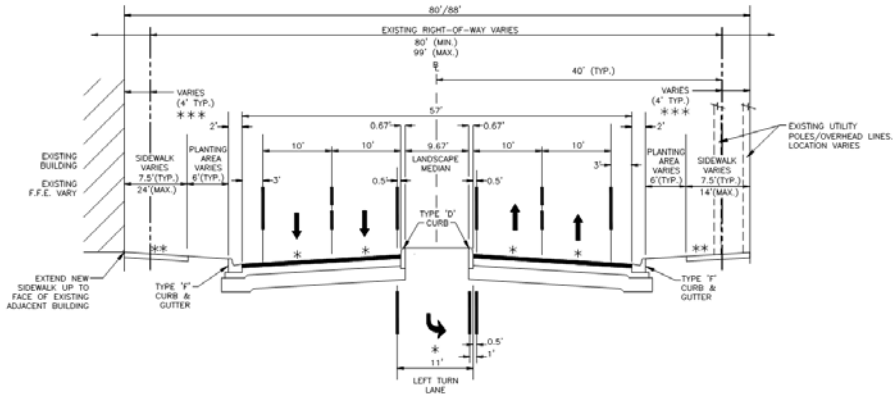
**INTEGRAL COLOR**  
 MANUFACTURER: L. M. SCOFIELD COMPANY  
 PHONE: 1-800-800-9900  
 COLOR: WESTWOOD BROWN  
 NOTE: FOR ALL INTEGRAL COLOR CONCRETE LOCATIONS USE LITHOROME COLOR WAX - SEE PLANS FOR LOCATIONS

**ENHANCED PAVING BANDS**  
 (BAND WIDTH LOCATED ON PLAN)

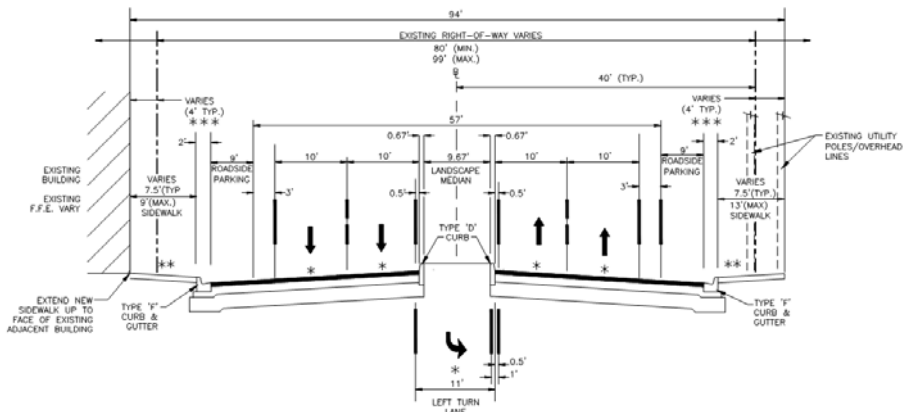
- TYPE A: 16" WIDE TYP.
- TYPE B: 32" WIDE TYP.
- TYPE C: 44" WIDE TYP.

# MLK BLVD. – PHASE 2

PROJECT DESCRIPTION –  
ROADWAY RECONSTRUCTION AND STREETScape  
COMPLETED PHASE 1 (EAST OF NW 6<sup>th</sup> AVENUE)



TYPICAL 80'/88' ROADWAY SECTION WITH NO ROADSIDE PARKING



TYPICAL 94' ROADWAY SECTION WITH ROADSIDE PARKING



# MLK BLVD. – PHASE 2

PROJECT DESCRIPTION –  
LANDSCAPE & HARDSCAPE BEAUTIFICATION / MULTI-MODAL / PEDESTIAN SAFETY  
COMPLETED PHASE 1 (EAST OF NW 6<sup>th</sup> AVENUE)



# MLK BLVD. – PHASE 2

## PROJECT CONSTRUCTION

- MLK PHASE 1 AND 2 WERE PREVIOUSLY FULLY DESIGNED AND PERMITTED.
- SOME PERMITS HAVE EXPIRED FOR PHASE 2 AND ARE CURRENTLY BEING REPROCESSED.
- THE CITY'S INTENT IS TO HAVE THIS PROJECT BE THE FIRST UNDER THE G.O. BOND TO GO UNDER CONSTRUCTION.
- THE CITY IS IN THE PROCESS OF FORMALLY SELECTING THE CONSTRUCTION-MANAGER-AT-RISK (CMAR)
- PROJECT SCHEDULE  
CONSTRUCTION COMPLETION – 2021  
ANTICIPATED CONSTRUCTION DURATION 12-MONTHS



#KEITHteam