



**pompano
beach**
Florida's Warmest Welcome

CITY OF POMPANO BEACH NEW FIRE STATION #114

DESIGN/BUILD BY:



Di Pompeo
Construction Corporation
A Family Tradition Since 1927

SALTZ MICHELSON
ARCHITECTS

THE NEW FIRE STATION #114 – G.O BOND PROJECT

- The City currently has six Fire Stations and the New Fire Station #114 will be the seventh Fire Station to be built.
- Fire Station #114 will be located at the corner of SW 36th Avenue and McNab Road to reduce response time and enhance fire and emergency services to the area.
- This project includes land acquisition along with the new 2-story, 3-bay Fire Station.
- The cost to design and build the station will be approx. \$5,750,000.
- This contract requires two Public Readings. The City Commission approved first reading of the Ordinance on March 12, 2019 and the second reading was approved, June 11, 2019.
- The Fire Station's Architectural Design Phase has already started.
- The Fire Station should be completed and delivered to the City by September 2021.



FIRE STATION #114 – LOCATION MAP



FIRE STATION #114 – SITE PLAN



FIRE STATION #114 – SOUTH and EAST ELEVATIONS



SOUTH ELEVATION
SCALE: 1/8" = 1'-0"



EAST ELEVATION
SCALE: 1/8" = 1'-0"

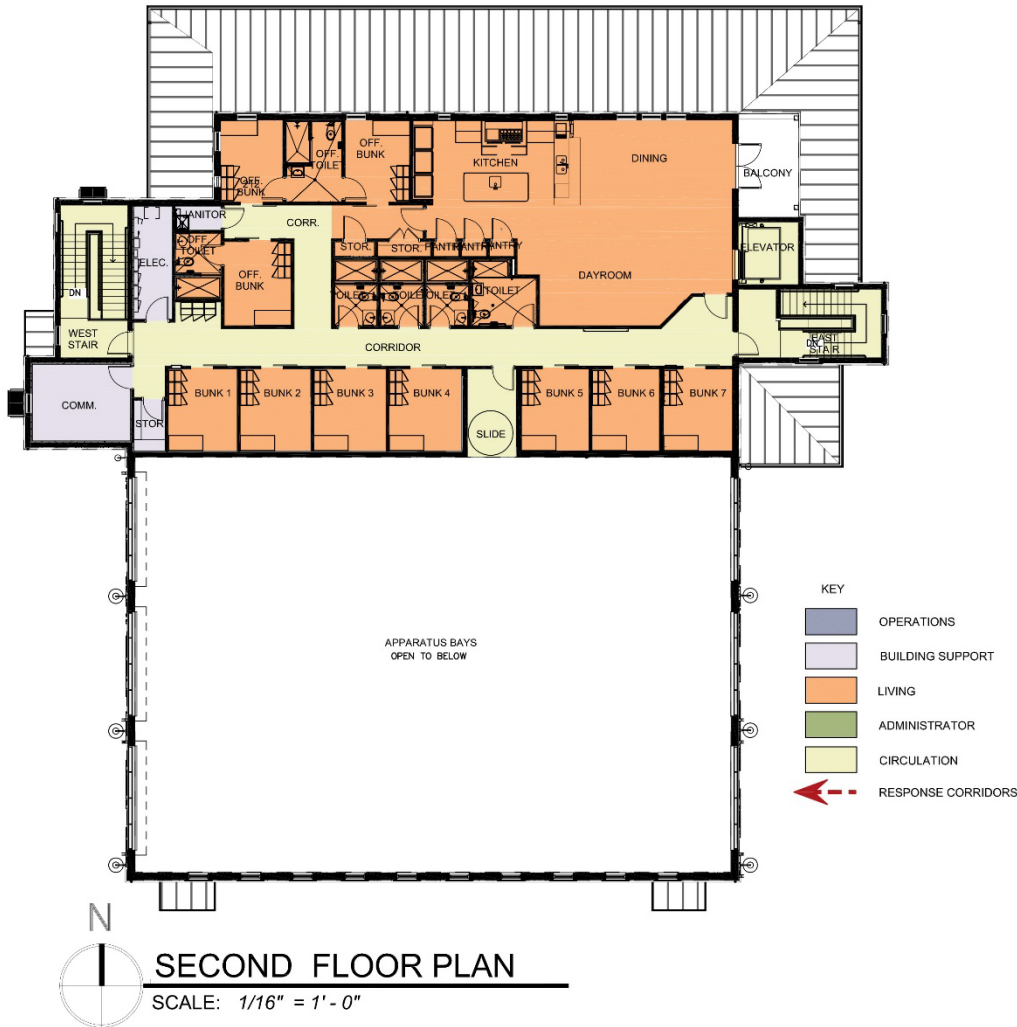
- We listened to the wants and needs of the fire department specifics and included them in our final product.
- The exterior design maintains and accents the same architectural “style” as set forth by previous prototype “City Standard”.
- The windows and covers on the second floor facing South will be opaque so no one can see into the neighboring residential units.
- All City of Pompano Beach Fire Stations are Sustainability designed through City’s Development Standards and Green Globes.

FIRE STATION #114 – FIRST FLOOR PLAN



- The circulation for the station has been mostly streamlined for single double loaded corridors.
- The pharmacy is located adjacent to the circulation to and from the apparatus bays for ease and use.
- The Battalion Chief is set on the first floor to provide privacy and administration separation from living areas above.
- The Laundry room has been located “inside” the living area away from contaminants harmful to fire crews.
- The ice machine has been relocated in the alcove area further from the center exposure of the apparatus bays.
- The brass poles have been removed and replaced with a single slide centrally located to reduce impact injury and speed up response time.

FIRE STATION #114 – SECOND FLOOR PLAN

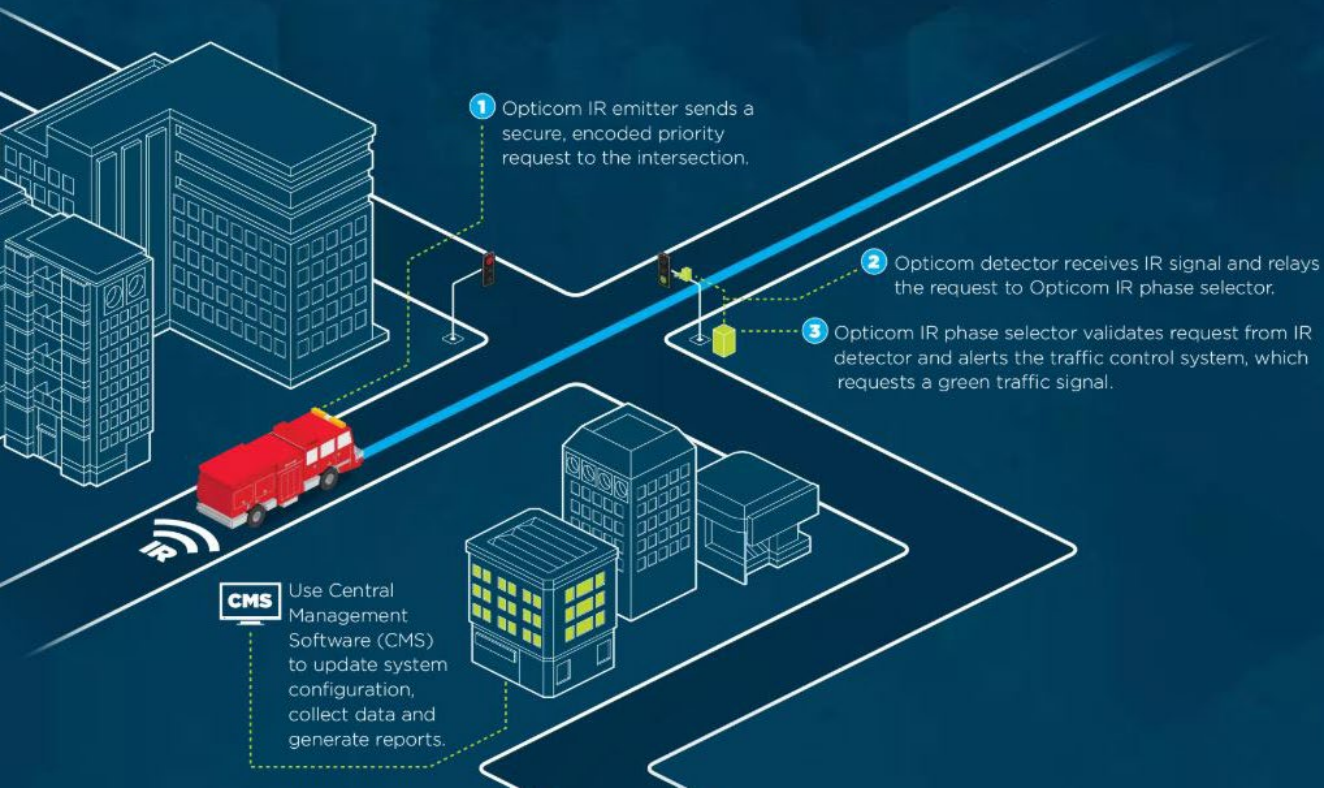


- The redesign of the mechanical systems allowed better individual environment comfort control in each bunk room.
- The fresh air make up and exhaust systems are designed to allow for better functioning environments.
- The design of the station's finishes are conducive for better maintenance and sustainability.

FIRE STATION #114 – OPTICOM SYSTEM

HOW IT WORKS

Proven results from GTT solutions.



- An OptiCom Emergency Vehicle Pre-emption (EVP) device will be installed in each fire truck to control the traffic signals.
- The OptiCom EVP system is used to reduce the need for fire alarm noise.

REDUCE
INTERSECTION
CRASH
RATES



IMPROVE
RESPONSE TIMES
by up to

25%*



OPTICOM™
BENEFITS



**pompano
beach**
Florida's Warmest Welcome

CITY OF POMPANO BEACH NEW FIRE STATION #114

DESIGN/BUILD BY:



Di Pompeo
Construction Corporation
A Family Tradition Since 1927

SALTZ MICHELSON
ARCHITECTS