



Palm Aire Neighborhood Improvements

Project No. 19358

Public Workshop

July 31, 2019

TYLIN INTERNATIONAL



Calvin, Giordano & Associates, Inc.
EXCEPTIONAL SOLUTIONS





Agenda

- Summary of Last Public Meeting
- Meeting Results
- Proposed Improvements

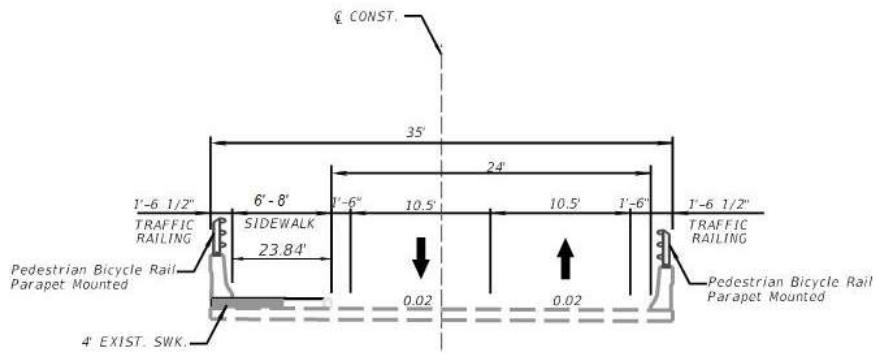
Meeting Summary

Planned Improvements

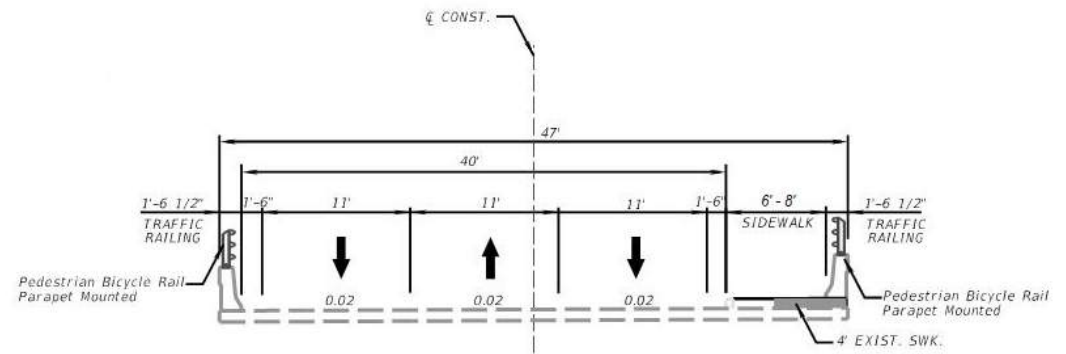
Safety & Aesthetics

- Widen the sidewalks.
- Replace railings to improve bicyclist and pedestrian safety.
- Add entry and exit features.
- Provide lighting to illuminate path across bridges.
- Mill and overlay existing asphalt bridge decks.
- Update signing and marking of crosswalks.

Typical Sections



W. Palm Aire Drive Bridge (South)



N. Palm Aire Drive Bridge (North)

● Furnishings - Benches and Trash Receptacles

Existing Benches and Trash Receptacles



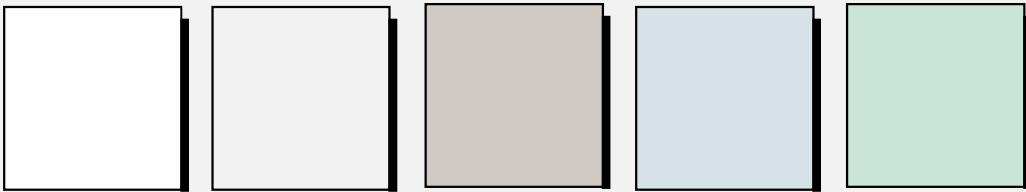
Existing Lighting



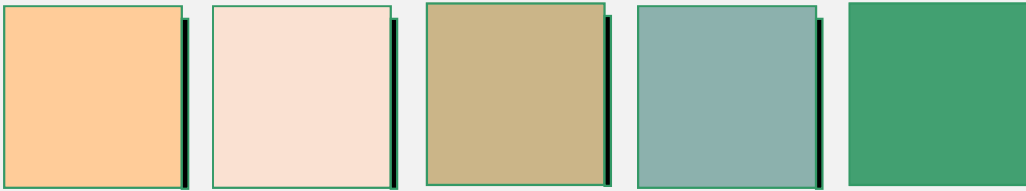
Color Themes



City



Light



Traditional

Baseline Traditional Concept



Baseline Traditional Concept



Metal Curve Concept



Metal Curve Concept



Stamped Concrete Concept



Stamped Concrete Concept



Benches and Trash Receptacles Concepts



Stay Collection



Stay Collection



Park Vue Collection



Chase Park Litter



Metro Collection



Metro Collection

Lighting Concepts



Hi-Glo and Lo-Glo Area and Pedestrian Lighting



Signal Area and Pedestrian Lighting



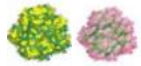
Bega Area and Pedestrian Lighting

● Proposed Locations for Fitness Equipment Along Trail

● Existing Fitness Equipment

Fitness Equipment Concept





PROPOSED FLOWERING TREES



PROPOSED EVERGREEN TREES



PROPOSED ROYAL PALMS



PROPOSED SMALL PALMS

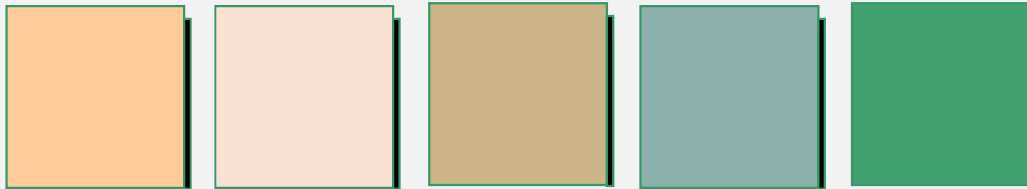
Landscape Concept



Proposed tree/palm locations contingent upon approval by SFWMD

Meeting Results

Preferred Color Scheme and Bridge Concepts



Color Scheme:
Traditional



Traditional

Preferred Benches, Receptacles, and Lights



Park Vue Collection

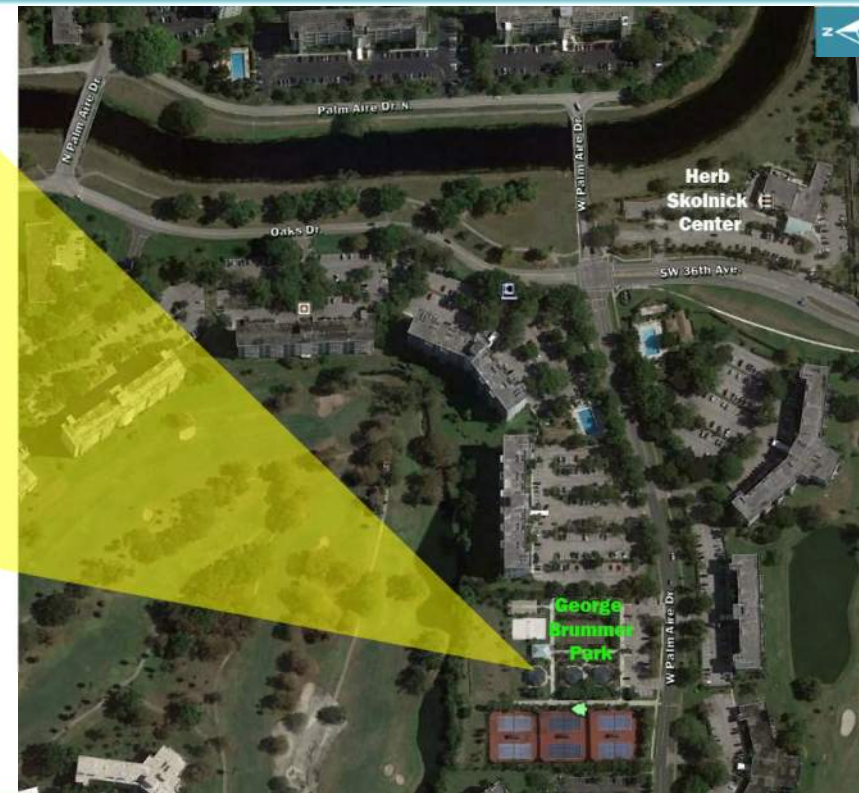


Chase Park Litter



Hi-Glo and Lo-Glo Area and
Pedestrian Lighting

Fitness Equipment Determination



Existing Fitness Equipment at George Brummer Park (7min. Walking distance from Herb Skolnick Center).

Public Comments Summary:

- Public participation: 9
- Desire to create a special place for the area between the bridges
- Doggy bag dispensers in park
- Distinctive appearance for bridges and walkway
- Repair walking path
- Use linear lighting on bridges with changing colors
- Consider water features in the canal or around the area
- Banner arms on light poles
- Provide signage on bridges

Proposed Improvements

Masonry Traditional Design



Proposed Site Amenities

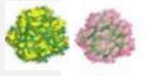


Proposed Shelter – By Others



Proposed Water Feature





PROPOSED FLOWERING TREES



PROPOSED EVERGREEN TREES



PROPOSED ROYAL PALMS



PROPOSED SMALL PALMS

Proposed Landscape



Proposed tree/palm locations contingent upon approval by SFWMD